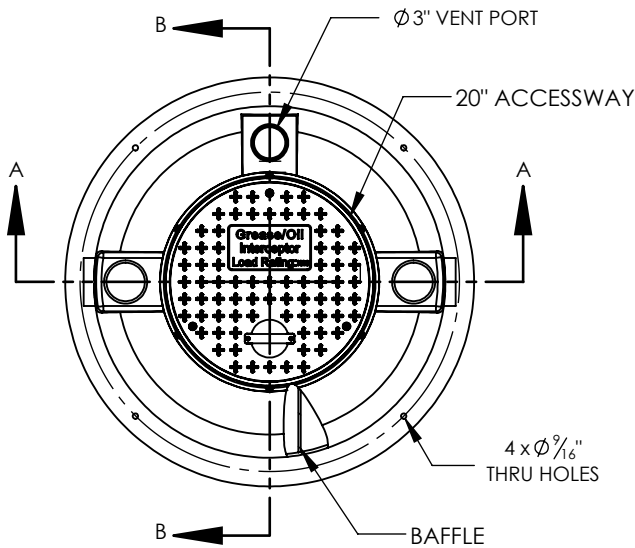


NOTES

ALL Z-50H UNITS ARE MANUFACTURED WITH FIBERGLASS REINFORCED PLASTICS.

1. PHYSICAL CHARACTERISTICS AND THICKNESS: POLYESTER RESIN AND E GLASS MINIMUM THICKNESS 5/16" TOP AND WALL AND 3/8" BOTTOM
2. ALL Z-50H UNITS ARE TO BE INSTALLED IN ACCORDANCE WITH THE MANUFACTURER'S INSTALLATION INSTRUCTION
3. STANDARD PIPING IS SCH. 40 PVC
4. Z-50H UNITS COME STANDARD WITH 4" INLET AND OUTLET
5. EXTENSION COLLAR TO BE ORDERED TO MEET FINISHED GRADE, CUT ON SITE FOR FINAL ADJUSTMENT AND CAULKED WITH SIKAFLEX BY CONTRACTOR FOR WATERTIGHT SEAL
6. COVERS AVAILABLE FOR H2O TRAFFIC LOADING, PEDESTRIAN LOADING OR ABOVE GROUND INSTALLATION
7. 30 YEAR WARRANTY AGAINST LEAKS, AND STRUCTURAL FAILURE DUE TO MANUFACTURING DEFECTS
8. U.S. PATENT #5,746,912; CDN PATENT #2,195,822



US PAT. # 5746912

Fog-Ceptor®

MANUFACTURER: ZURN GREEN TURTLE

PROCEPTOR MODEL NUMBER: PDI G-101

STANDARDS: 65 US GAL.

LIQUID CAPACITY (WORKING VOLUME): 50 GPM

RATED FLOW: TYPE A

PRODUCT TYPE BY RATING: 90%

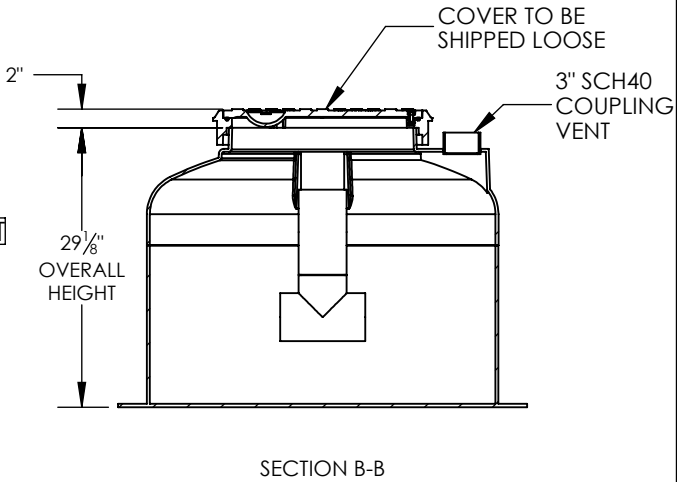
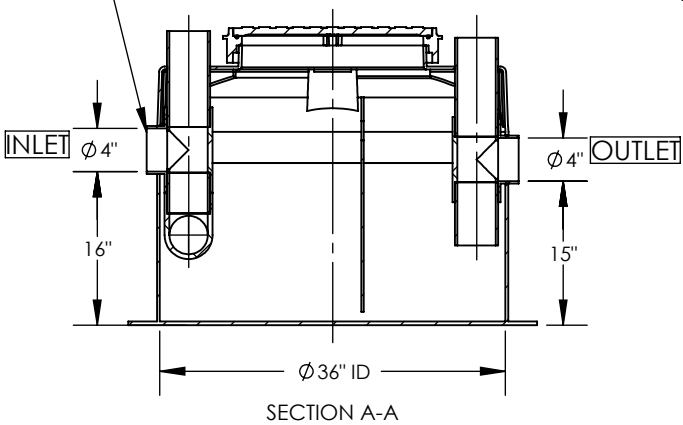
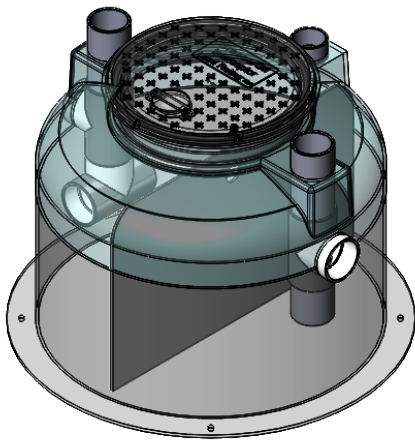
EFFICIENCY AT THE RATED CAPACITY: 6 FT.

STD. MAX BURIAL DEPTH TO TOP OF TANK: 1133 PSF

MAX VERTICAL LOAD:

MONTH/YEAR OF MANUFACTURE:

PROVIDED FLOW CONTROL
DEVICE (NOT SHOWN) TO BE
INSTALLED ON SITE



TOTAL WET VOLUME	65 GAL
MAX GREASE CAPACITY	130 LBS
MAX SOLID CAPACITY	
FLOW RATING	50 GPM
MAX TEMPERATURE	160 F
MIN. TEMPERATURE	- 30 F

DWG. TITLE:
Z50H FOG-CEPTOR

PROJECT:

SIZE A

DRAWING NOT TO SCALE

Proceptor®

ZURN®

DWG #: 19-4816-C

REV. 3