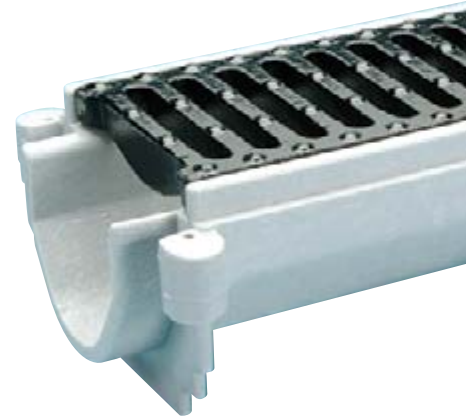


Spec•Sport™ Specified Sport Systems

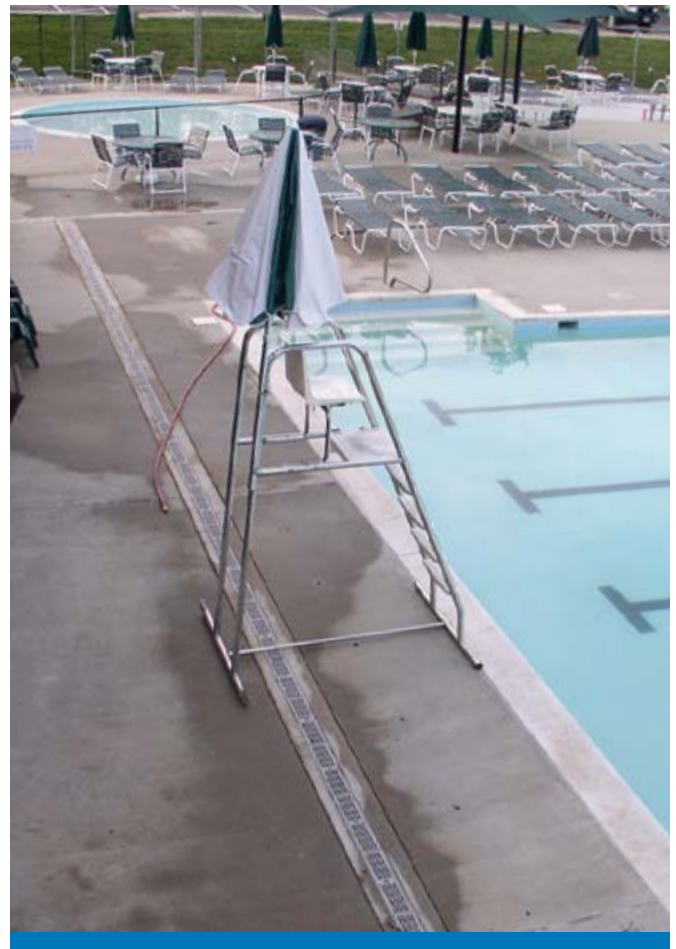
Custom drainage for arenas, rinks, running tracks, swimming pools, and other high pedestrian traffic areas.



High pedestrian traffic areas require special drainage needs. Zurn's Specified Sport Systems provide functional drainage while enhancing your sporting space. With several color and grating options available, your drainage system will blend seamlessly with the surrounding area.

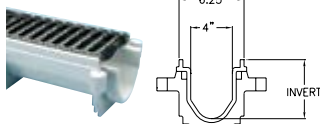
Features and Benefits

- Durable high density polyethylene composite channels, with grating or slot drain, provide durable drainage for your building, hardscapes and fields
- Class A through heavy-duty Class F load rating grates available
- Avoid tripping hazards and provide ease of mobility with optional heel proof and ADA complaint gratings
- Various grating and color options are available to match school colors or hardscapes
- Special duty utility trench drains available in several sizes to accommodate high volume drainage needs
- Removable grates for easy maintenance and cleaning
- Made in the U.S.A. options available

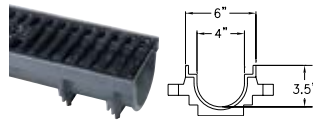


Spec•Sport™ Specified Sport Systems

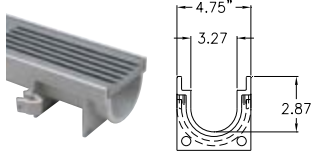
Trench Drains and Catch Basins



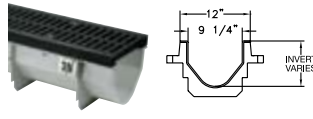
Z886 80" Length Pre-Sloped, HDPE



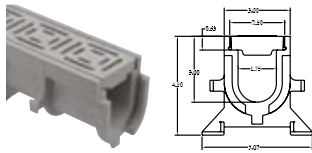
Z883 40" Length Non-Sloped, Polypropylene



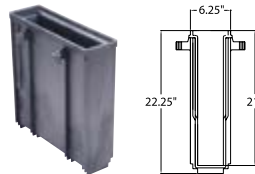
Z884 40" Length, Non-Sloped



Z882 8" Length, Pre-Sloped, HDPE

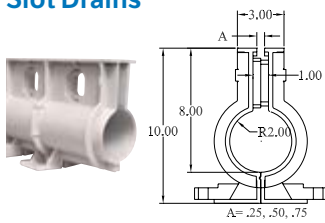


Z880 Length, Non-Sloped, Plastic
Various grating and color options are available to match school colors or hardscapes.

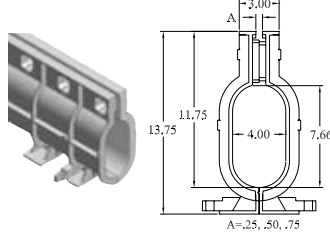


Z887 6" x 20" Catch Basin
Available in 12" x 24" and 24" x 24".

Slot Drains

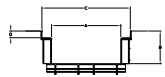


Z888-4 0" Length, Non-Sloped
Available with 4" extension and heavy-duty frame.



Z888-6 0" Length, Non-Sloped
Available with 4" extension and heavy-duty frame.

Utility Trench – Special Duty



Z874-U-HD

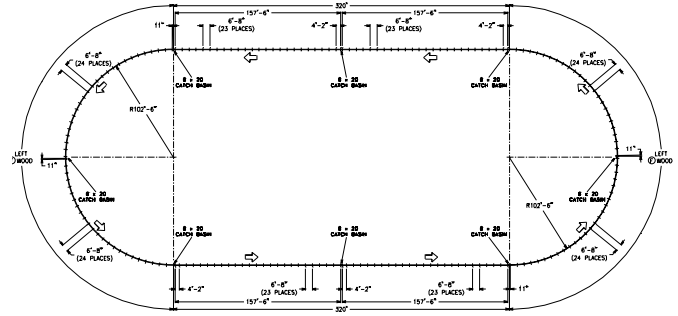
Available in medium-duty systems with aluminum frames and covers, or steel covers.

GRATE	DIMENSIONS IN INCHES			
	A THROAT WIDTH	B MAX. DEPTH	C GRATE WIDTH	D GRATE HEIGHT
Z874-U-4-HD	[102]	22 [559]	[152]	3/4 [19]
Z874-U-9-HD	[229]	22 [559]	12 [305]	1-1/4 [32]
Z874-U-12-HD	12 [305]	30 [762]	17 [432]	1-3/4 [44]
Z874-U-18-HD	18 [457]	30 [762]	23 [584]	1-3/4 [44]
Z874-U-19-HD	19 [483]	30 [762]	24 [610]	1-3/4 [44]
Z874-U-21-HD	21 [533]	30 [762]	27 [686]	1-3/4 [44]

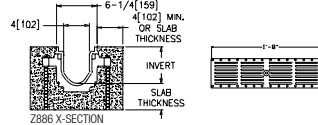
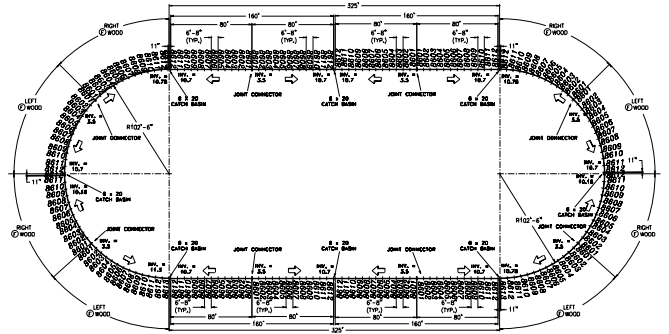
The Z874-U is a neutral, non-sloped utility drain system. Depths of this system may range from 4" to 30".

Heelproof plastic grates available in custom colors. ADA/heelproof compliant available.

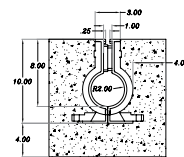
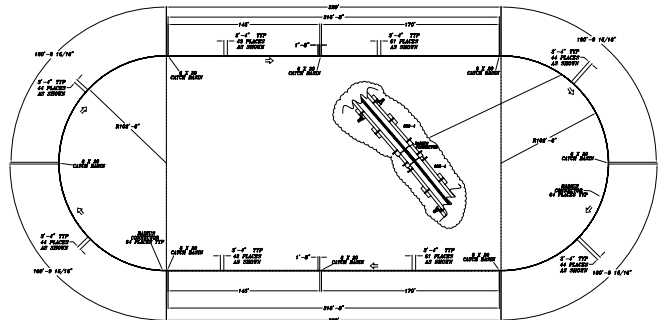
Standard Non-Sloped Track Layout with Removable Grate



Standard Sloped Track Layout with Removable Grate



Standard Non-Sloped Slot Drain Track Layout



ZURN INDUSTRIES, LLC Linear Drainage Operation
1801 Pittsburgh Avenue, Erie, PA 16502, 855-663-9876

In Canada: **ZURN INDUSTRIES LIMITED** 7900 Goreway Drive, Unit 10, Brampton, Ontario L6T 5W6, 905-405-8272

Form No. 220-034, 2/17



1.855.ONE.ZURN | ZURN.COM