

# Case Study

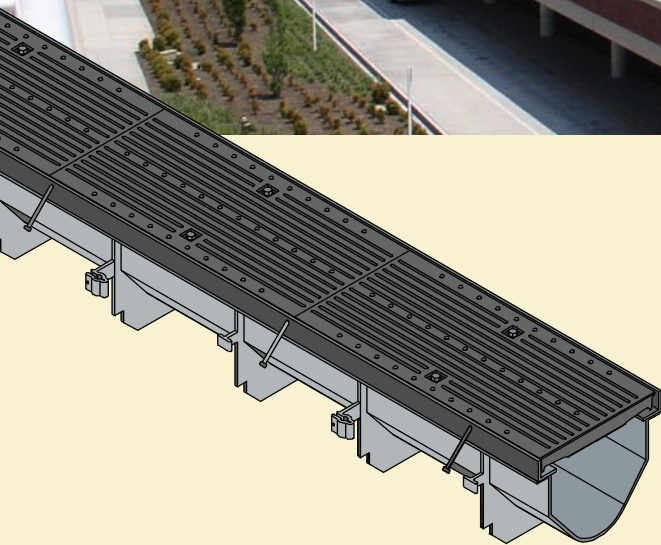
**Richmond International Airport**

**Henrico County, Virginia**



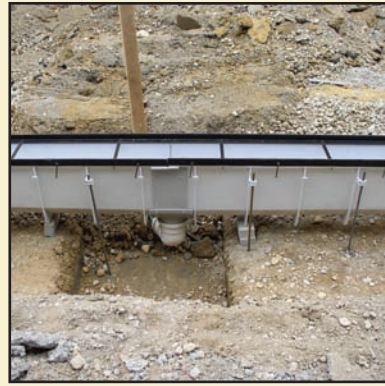
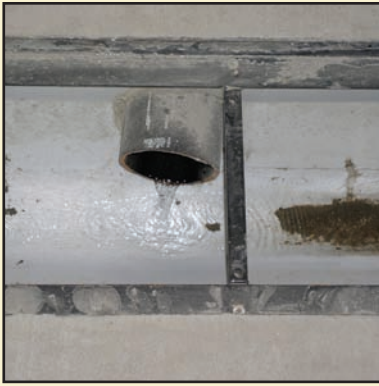
## **Z882-HD-HPD Applications**

- Streetscape*
- Curbside Parking*
- Parking Lots*
- Sidewalks*
- Airports*
- Highways*
- Gas Stations*



- A total of 2500 feet of Z882-HD-HPD installed
- Elevated bridge trench drains connected to roadway drains by 4-inch cast iron pipe
- Trench drain follows curve of roadway curb
- Grate ADA and traffic rated
- Monolithic concrete pour used for trench drain in curb/gutter pan and bridge deck
- Contractor chose to use Zurn, due to service, price, and ease of installation
- Installer: General Contractor, Concrete Contractor

► **Zurn Industries is a leader in innovative structural composite channel drain systems, with office and warehouse facilities in Falconer, New York.**



## Design

- Project was designed with trench drain in elevated road deck and in the road gutter pan below.
- ADA compliant, heel-proof grates were required.
- Water will release into 6-inch pipe either out the end or bottom of trench drain.
- Pre-fabricated sections of trench drain were created to match radius of roadway.



Trench drain from the upper deck was tied into the lower with 4-inch cast iron soil pipe fitted through the trench drain side wall.



**ZURN INDUSTRIES, LLC** FLO-THRU OPERATION  
 2640 SOUTH WORK STREET, FALCONER, NY, U.S.A. 14733  
 PHONE: 716/665-1132 FAX: 716/665-1135  
 www.zurn.com

In Canada:

**ZURN INDUSTRIES LIMITED**  
 3544 NASHUA DRIVE, MISSISSAUGA, ONTARIO L4V 1L2  
 PHONE: 905/405-8272 FAX: 905/405-1292