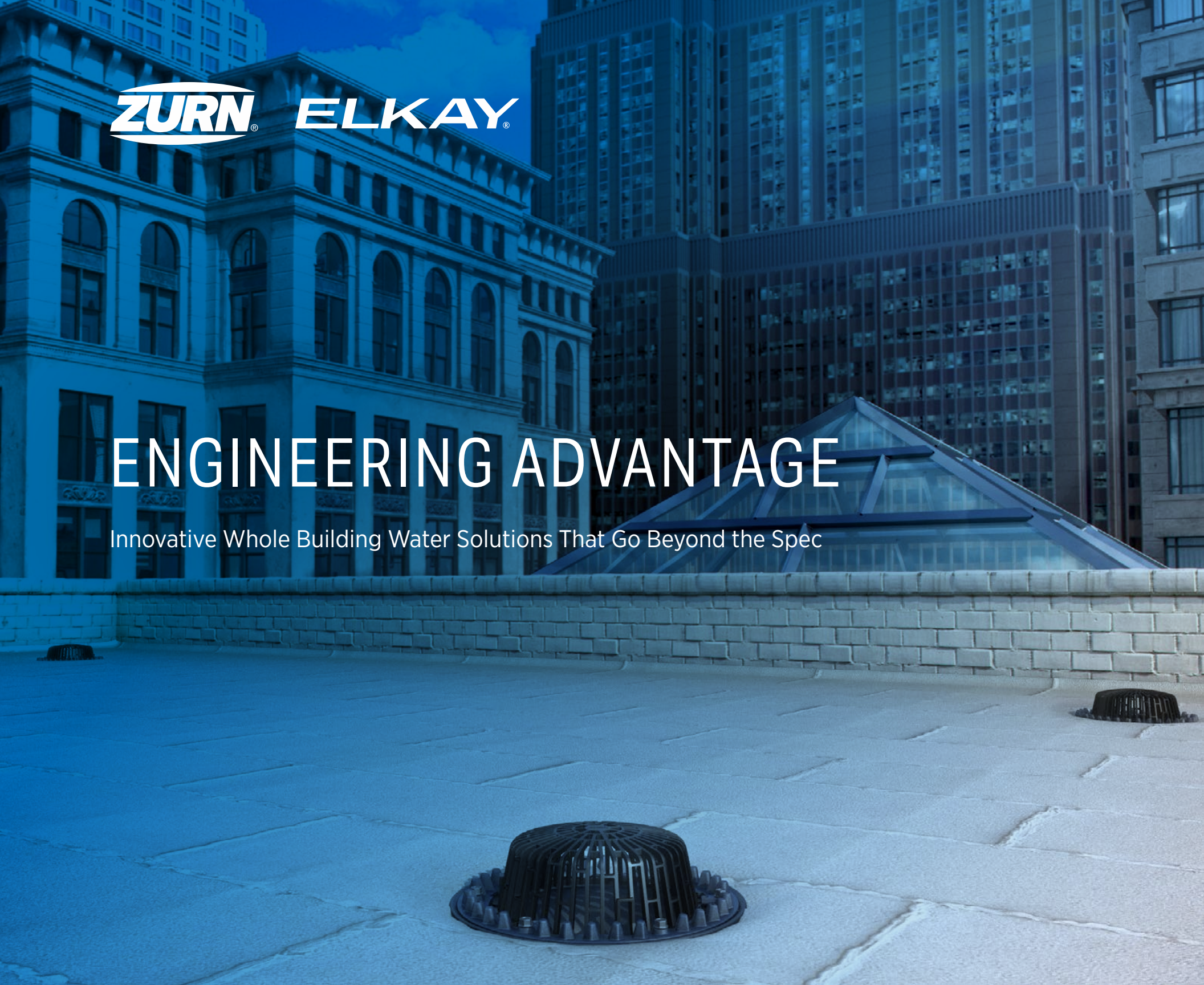




ZURN® **ELKAY**®

ENGINEERING ADVANTAGE

Innovative Whole Building Water Solutions That Go Beyond the Spec



Roof Drains	4
Floor Drains	10
Carriers.....	12
Stainless Steel Drains	19
Trench Drains.....	20
PHIX Acid Neutralization	22
Interceptors	23
Water Control and Backflow Preventers	26
Pressure Reducing Valves	28
Fire Protection	30
Finish Plumbing	32
Handwashing Systems	38
Drinking Water.....	40
PEX.....	43
Commercial Sinks	44
Smart Products	46





For over 100 years, Zurn Elkay has been the brand engineers trust, because of our product innovation, reliability and value. Today, you'll find a combined portfolio with the largest breadth of high-quality products that go beyond the spec.

Go above and beyond with Zurn Elkay — our dedicated team is ready to help you.

ZURN® ROOF DRAINS

Optimized designs enhanced with the latest technology are why Zurn roof drains outperform the competition. They're engineered to meet code and are so effective that they can reduce the total number of roof drains needed. Find the widest range of roof drains in the industry for traditional, siphonic and specialty applications right here.

BEYOND THE SPEC

BEST-IN-CLASS FLOW PERFORMANCE

The FloForce® parabolic body design and additional enhancements are engineered to evacuate the highest amount of water at the lowest head height.

ADHERES TO CODE

Zurn roof drains are designed to the requirements of IPC for proper slope and drainage.

ACCURATE FLOW DATA

Industry-leading test stands provide accurate data to meet today's standards.



Z100F
FloForce High Performance
Roof Drain

Zurn's FloForce technology

provides industry-leading efficiency for gravity-type roof drainage systems, **evacuating water faster**. The higher flow rate meets evacuation requirements while leaving room for rain table changes.

Discover how they work at
youtube.com/watch?v=4MHIGRCzwf8

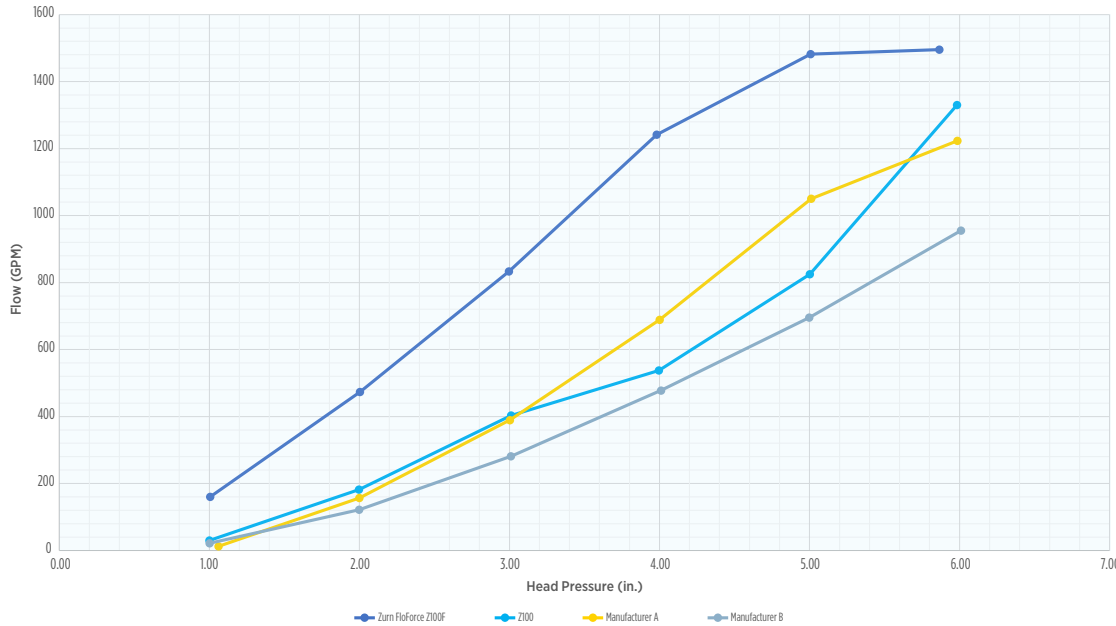


Z100F FLOFORCE® ROOF DRAIN TESTING

Flow efficiency at 2" provides twice the flow rate compared to competing drains. A 6" Z100F FloForce high-performance roof drain compared to three other 6" outlet roof drains. Testing was performed by Farabaugh Engineering and Testing, Inc. and reported on June 24, 2021.

6NH DATA SUMMARY

Flow vs. Head Pressure



ROOF DRAINS

Zurn offers the greatest variety of roof drains to fit any application. For varying insulation depths, our drain with adjustable riser will simplify installation. A deck plate add-on can also reduce installation time without needing an underdeck clamp.



Z100F-DR
*Roof Drain With Non-wetted Drain
Riser Extension Assembly*

BEYOND THE SPEC

Using a Zurn top-set deck plate can save up to

25 min

per drain, reducing job costs



Z100F-89
Roof Drain With Overflow Dam

AVAILABLE SUFFIX OPTIONS



Z100-DR
Top-set® Drain Riser and Deck Plate



Z100F-DP
Roof Drain With Top-set Deck Plate



Z100F-E Static Extension
Available 1"-4" high in 1/2" increments



Z100F-EA Adjustable Extension
*2-1/8" min. to 3-1/2" max. adjustment height
(wetted extension)*



Z100F-89 Overflow Dam
*2" high as standard; also available in
3" and 4" heights*



Z100F-84 Perforated Gravel Guard
*Attaches from the top, not the sides;
available 1"-20" high in 1/2" increments*



Z100F-85 Perforated Extension
Available 1-1/2"-24" high in 1/4" increments

MORE FLOFORCE APPLICATIONS



Z150F
Prom Deck Drain



Z150F-PD
2" Tall Low-profile Dome
(For install in a subfloor underneath
pavers of a ventilated floor system)



Stainless steel sediment bucket with
integral lift handles provides easy
maintenance, and finer mesh design
traps more debris



Z150F-4NH-DP
Prom Deck Drain With
Deck Plate, No Hub



Z150F-PD-89
Prom Deck Drain With High
Overflow Dam and Low-profile
Pedestal Paver Dome

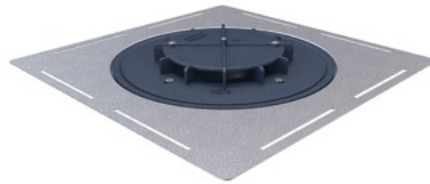


ADDITIONAL ROOF DRAINS

Zurn offers the largest variety of roof drains to fit any application — from standard drains with FloForce design to siphonic drains, which can be customized. Siphonic action keeps air out of pipes by inducing a negative pressure for quick, efficient drainage. The smaller-diameter, non-sloping piping system of a siphonic drain takes up less space and costs less than traditional-sized pipes.



Z110
Green Roof Drain



Z130S
Siphonic Roof Drain



100C
Froet Drain

Chameleon Series

Zurn Chameleon Series downspout nozzles are manufactured from a cast-aluminum alloy and come powder-coated in five finishes designed to blend into common building exteriors. Each assembly is furnished with multiple gaskets to accommodate cast iron or PVC connections. Downspouts are available in 2", 3", 4", 6", 8", and 10" sizes.



ZF199-BW
*Downspout Nozzle
in Bone White*



ZF199-SAN
*Downspout Nozzle
in Sandstone*



ZF199-SGR
*Downspout Nozzle
in Satin Gray*



ZF199-MB
*Downspout Nozzle
in Medium Bronze*



ZF199-JB
*Downspout Nozzle
in Jet Black*

ZURN FLOOR DRAINS AND CLEANOUTS

Our BZ1/SZ1/EZ1 floor drain technology offers simpler installation with its unique post-pour adjustability, which lowers installation costs and prevents expensive rework.

BEYOND THE SPEC

ADJUSTABILITY

Industry-leading, post-pour adjustability allows you to raise, lower, or tilt-correct a drain from the elevation of the concrete pour.

SUITS MANY APPLICATIONS

Wide range of products serves your need for almost any application.

BETTER FINISHED PRODUCT

Shims are built into the rough-in cover for tilt adjustment and a more secure finish.



EZ1-PV2

PVC Drain With 5" Round Nickel Bronze Strainer and 2" x 3" Solvent Weld Outlet



EZ1-PV2



Competitor

Properly installed Zurn drain vs poorly installed non-Zurn drain

See all the benefits of the EZ1 drain at
youtube.com/watch?v=EDDA1EyQOY



FLOOR DRAINS AND CLEANOUTS



Z415-BZ1-DP
*Floor and Shower Drain,
Stainless Steel Deck Plate and Top Assembly*



Z415-BZ1
*Floor and Shower Drain,
With EZ1 Technology*



Z415B-DP
Deck Plate Drain



Z1400-BZ1
*DuraCoat, Cast Iron Cleanout
With EZ1 Engineering*

ZURN CARRIERS

Get industry-leading carrier innovation from Zurn — with superior line carry that's designed with low-flow fixtures in mind and the largest selection of narrow wall carriers.

BEYOND THE SPEC

WIDE SELECTION

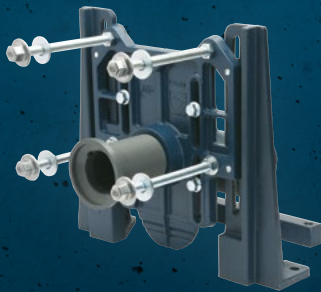
Standard load rating up to 500 lbs. with ability to meet 750 lb. or 1,000 lb. load-rating requirements.

HIGH PERFORMANCE

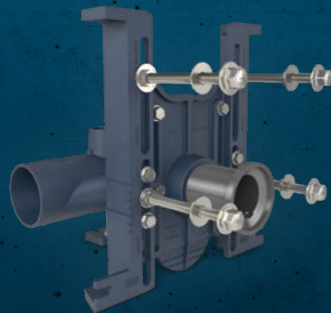
3" coupling technology and optimized fitting sweep provide best-in-class line carry.

FITS TIGHT CHASE SPACES

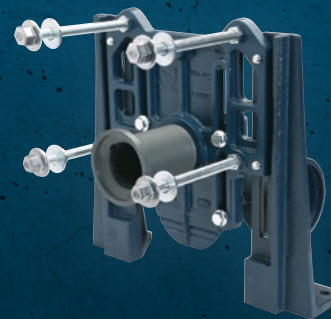
Various options to fit in narrow chase spaces, as narrow as 6" stud-to-stud.



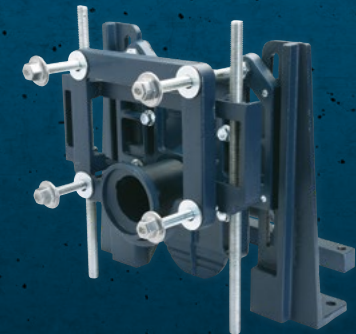
Z1201-N_4-XH
*Extra Heavy-duty Applications
(750-lb. rating)*



Z1201-N_4
*Standard Installation
and Angle Iron Framing*



ZN1201-N_4
Narrow Wall Applications



Z1201-N_4-XB
*Bariatric Applications
(1,000-lb. rating)*

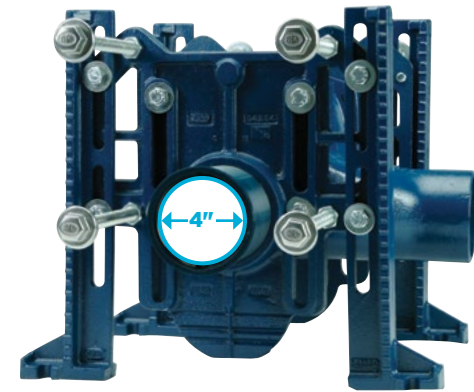
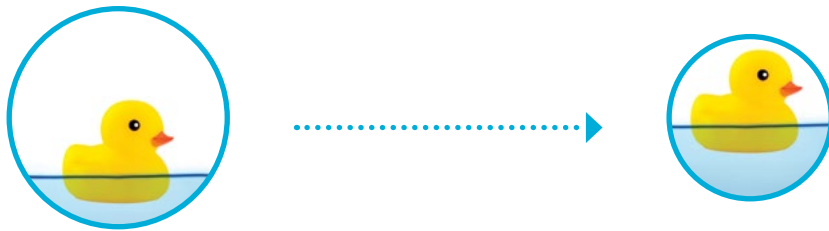
View standard chase requirements at
zurn.com/standard-chase



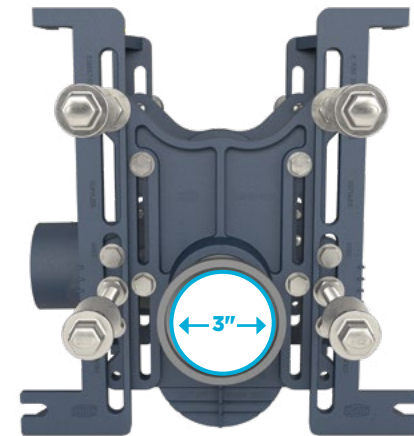
EVOLUTION OF ZURN CARRIER PERFORMANCE

Industry-leading Line Carry

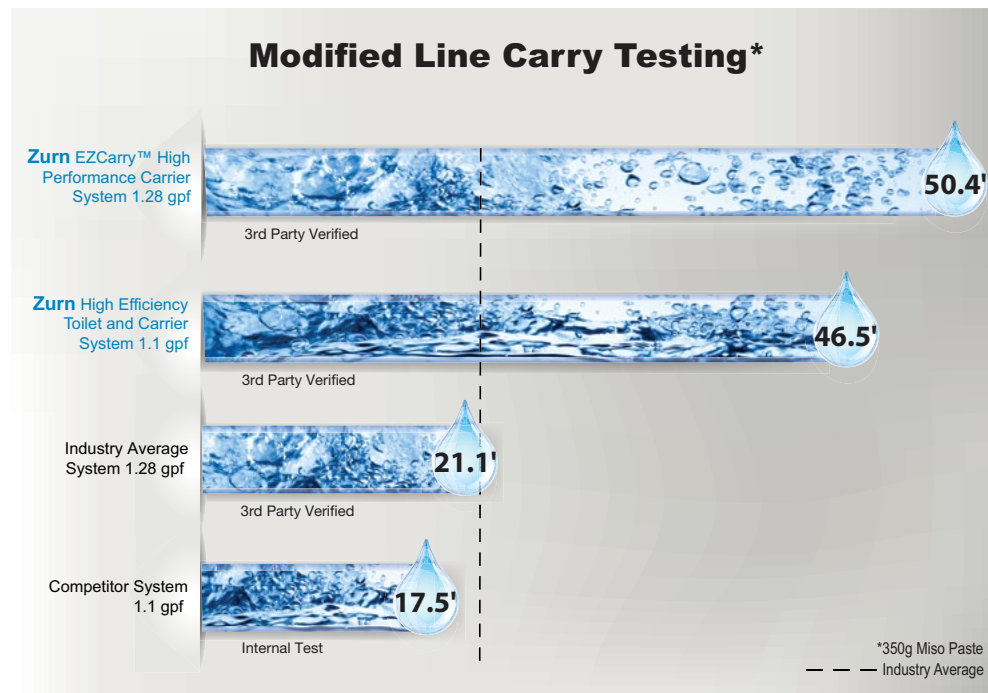
Transitioning from the traditional 4"-diameter coupling to a new 3"-diameter coupling maintains the slug of water delivered by the flush valve through the carrier system. This directs waste downstream with a more substantial bed of water beneath it, providing Zurn's industry-leading line carry.



4", Traditional Z1203 Series



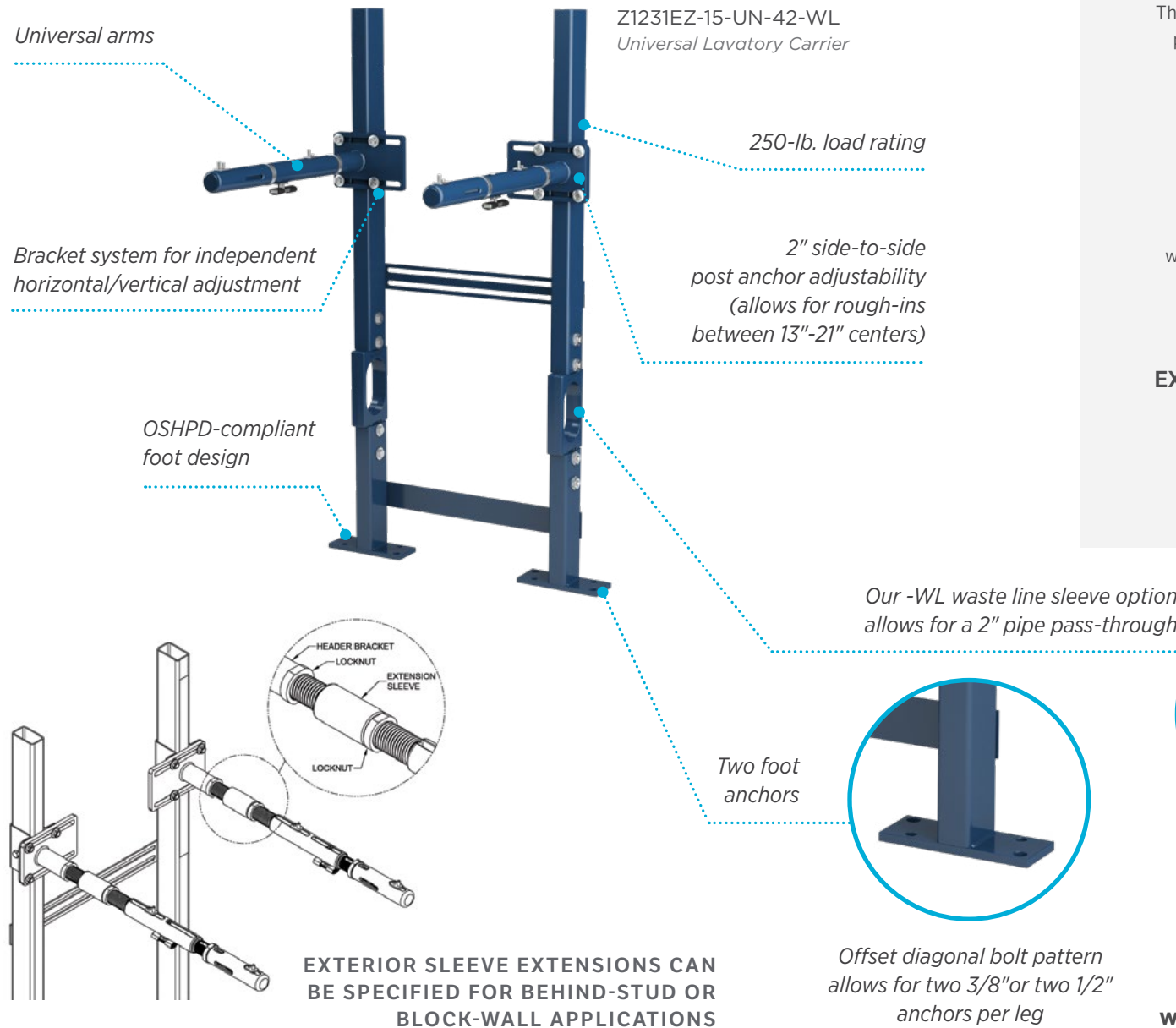
3", New Z1201 Series



View narrow chase requirements at zurn.com/narrow-chase



Z1231EZ UNIVERSAL LAVATORY CARRIER



Z1231EZ-15-UN-42-WL
Universal Lavatory Carrier

Universal arms

Bracket system for independent horizontal/vertical adjustment

OSHPD-compliant foot design

250-lb. load rating

2" side-to-side post anchor adjustability (allows for rough-ins between 13"-21" centers)

Our -WL waste line sleeve option allows for a 2" pipe pass-through

Two foot anchors

EXTERIOR SLEEVE EXTENSIONS CAN BE SPECIFIED FOR BEHIND-STUD OR BLOCK-WALL APPLICATIONS

Offset diagonal bolt pattern allows for two 3/8" or two 1/2" anchors per leg

BEYOND THE SPEC

SIMPLIFIES SPECIFICATION

There's no need to spec multiple carriers per fixture with our universal carriers that have adjustable header plates and universal telescoping arms.

MEETS YOUR NEEDS

OSHPD-compliant foot design and waste line sleeve option make it easier to specify in a narrow chase.

EXCEEDS LOAD REQUIREMENTS

Fully compliant to ASME A112.6.1 standards with a 250-lb. load rating.

Get a closer look:
[youtube.com/watch?v=z5Vqoa4Alq8](https://www.youtube.com/watch?v=z5Vqoa4Alq8)



Z1222-EZ UNIVERSAL URINAL CARRIER



ZPWC1 POD PRO STUD SUPPORTED WATER CLOSET CARRIER

Ideal for health care and hospitality environments, the ZPWC1 POD Pro carrier takes up minimal space and eliminates the need for additional labor and support materials during installation. Seven fitting options are available, which attach to the carrier from behind the wall, and the universal faceplate can be used to accommodate wall mount or floor mount back outlet fixtures. With ZPWC1, the POD can arrive ready to use, or it can be installed at various points of the project.



ZPWC1-NV4

ZPWC1 POD Pro Stud Supported Water Closet Carrier With 4" (102 mm.) No-hub Vertical Cast Iron Fitting



ZPWC1-NL4

ZPWC1 POD Pro Stud Supported Water Closet Carrier With 4" (102 mm.) No-hub Left Hand Horizontal Cast Iron Fitting

Adapter Fittings Available

Adapters include various cast iron and PVC options



ZPWC1-PV3



ZPWC1-PV4



ZPWC1-CI3



ZPWC1-CI4

BEYOND THE SPEC

SMALL FOOTPRINT

The compact design of the ZPWC1 is our narrowest chase offering, providing more room.

SECURE TRANSPORT

Uniquely secures to wall studs and fits within the POD during shipping, preventing damage during transport and delivery.



Watch how to assemble this product:
[youtube.com/watch?v=NGMbj6iJgZ8](https://www.youtube.com/watch?v=NGMbj6iJgZ8)



ZPD1 POINT DRAIN

Zurn's ZPD1 point drain and ZPT1 linear drain are both ideal for POD or modular construction and shallow floor applications due to their 7/8" overall assembly height and our patented "drop-in" outlet technology. They're also great for retrofit installations because the drain is shallow and the outlet can be pushed into a core drill hole in the structural slab.



Stainless Steel Body Assemblies
Available in 2" and 3" no-hub outlet types
with 5" and 6" round or square nickel bronze
or stainless steel tops



Avoid POD Damage:
*Tailpiece is inserted into the drain after the
POD is located and secured in a building*



ZPTSP Barrier Trap Seal Device
*Seals a P-trap to reduce
evaporation by 97%*

Visit zurn.com to learn more
about ZPD1 point drains



ZPT1 LINEAR DRAIN

ZPT1 is available in seven standard lengths, ranging from 24" to 60", and five decorative grate options.



-BW Basket Weave Grate



-DB Decorative Block Grate



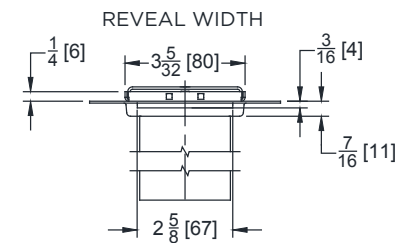
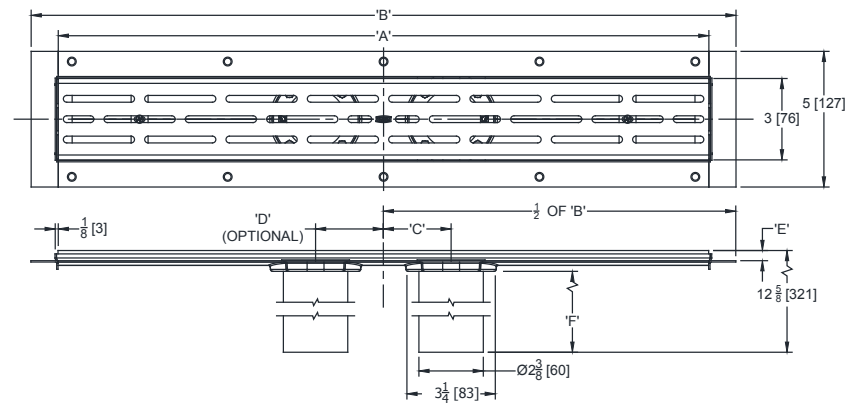
-SG Serenity Grate



-WG Wave Grate



-LS
Slotted Grate



ZURN STAINLESS STEEL DRAINS

Our spun stainless steel drains are constructed with minimal seams and welds for a more sanitary design that meets the highest standards for medical facilities and the food industry.

BEYOND THE SPEC

A DRAIN FOR EVERY APPLICATION

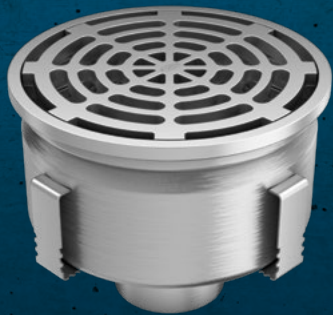
From cast and fabricated point-of-use options to trench drains options, we have the complete offering.

CUSTOMIZABLE

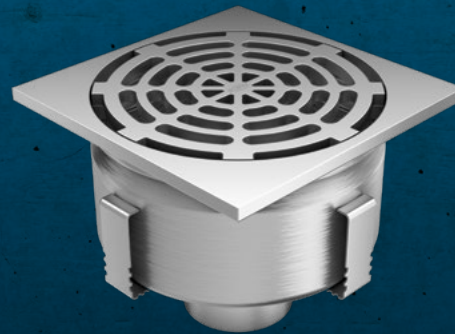
Beyond our standard portfolio, we can customize our industrial drains for specialized applications.

DURABLE AND CLEAN

Not only are our stainless steel drains heavy duty and corrosion resistant, those with a spun body minimize areas where bacteria could grow.



Z1805-12B
*Seamless Sanitary Floor Drain
With Round Top*



Z1805-12S
*Seamless Sanitary Floor Drain
With Square Top*

Ask us about our
**Z1805 spun-body,
seamless sanitary
floor drain**

Multiple configurations available for versatility and durability

Watch how these drains have helped Four Day Ray Brewing at
[youtube.com/watch?v=-RVSLKmSfwc](https://www.youtube.com/watch?v=-RVSLKmSfwc)



ZURN TRENCH DRAIN SYSTEMS

Look no further — Zurn offers a trench drain for every application, some models with up to an AASHTO F loading class. As your one-stop shop for trench drains that are built to your clients' requirements, we make specifying jobs simple.

BEYOND THE SPEC

BREADTH OF LINE

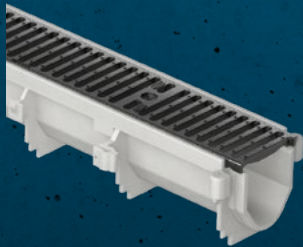
Wide range of options available to meet various load classifications.

DESIGN FLEXIBILITY

We provide the widest variety of material choices, sizes, and loading capabilities for ultimate flexibility in design.

AT YOUR SERVICE

Zurn engineering provides layout drawings and design assistance for any application.



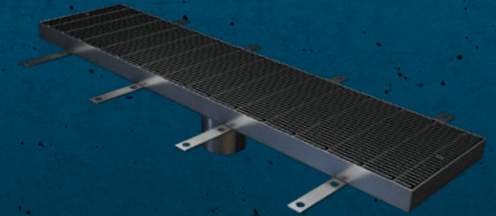
Z886
Perma-Trench® Drain



ZF812
Fiberglass Trench Drain



Z874-U
Utility Trench Drain



Z899-100
Elevator Drain

“

We just finished a job with Zurn trench drains and couldn't be happier with the end result. The quality of the product and uncomplicated installation saved us 30% on labor costs compared to other trench drain systems.

TONY WILLIARD PRESIDENT, TONY WILLIARD CONSTRUCTION

”

TRENCH DRAINS

Solutions for Every Project

No matter the application, we'll find a system that's fit for you and your customer.



Z880-BZ
Bronze Decorative Grate



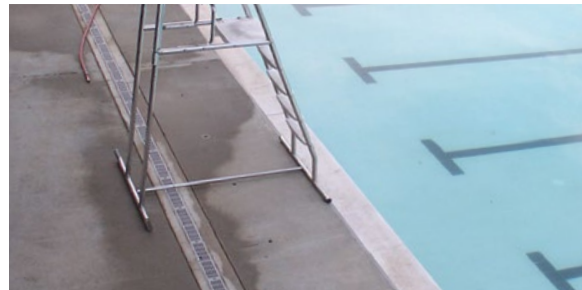
Z899-100
Stainless Steel Elevator Trench Drain System



ZF812
*Fiber Reinforced Non-Combustible Polymer
Trench Drain System With Steel Frame*



ZS890
Stainless Steel Trench Drain



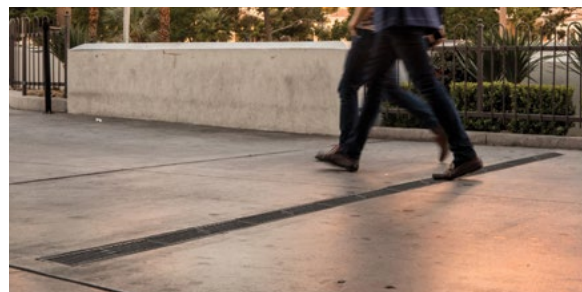
Z880-POG
Heel-proof Polyethylene Grate



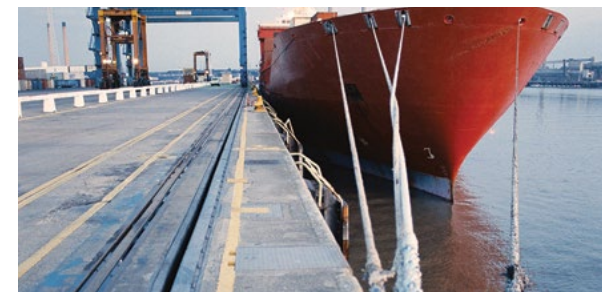
Z888
Tile Inlay Grate



Z888-12/18
Hi-Cap® Drain System With Transition Piece



Z886
Linear Trench Drain



Z874-12
Perma-Trench HDPE Drain System

ZURN PHIX ACID NEUTRALIZATION

Instead of using limestone, neutralize acid at point of use more safely and effectively using our PHIX cartridge. Its compact design fits conveniently under the sink within any application, new or retrofit, taking the place of traditional acid waste systems that terminate into large limestone neutralization tanks. Unlike limestone, PHIX media provides a visual indication that it has lost its effectiveness, eliminating the need for PH monitoring systems and specialized acid waste piping throughout the building. PHIX media is non-hazardous before and after use, making it easy to maintain without help of a licensed professional.

BEYOND THE SPEC

LOW MAINTENANCE AND COST

Reduced labor and maintenance keep costs down compared to traditional acid neutralization systems.

LESS SPACE, FEWER PARTS

Compact design fits conveniently under the sink, even in tight configurations.

RELIABLE, LONG LASTING

10-year warranty and NSF international standards adherence ensure lasting performance.



Non-hazardous
PHIX MEDIA
is included and
easy to service

Potential savings:
\$28K+

**Based on one 10-sink case study*

Watch the Fort Worth
SD case study at
youtube.com/watch?v=PtOOeH_kdeo



ZURN INTERCEPTORS

Our Green Turtle interceptors come in a range of capacities and feature corrosion-resistant construction. Unlike concrete interceptors, our Proceptor® model won't corrode from hydrogen sulfide, making it a more durable and cost-effective option. We offer custom configurations for differing applications, such as above-ground installs, double systems, parking garages, zero lot line conditions, and more.

BEYOND THE SPEC

RANGE OF PRODUCTS

Our fats, solids, and oil interceptors offer the widest range of product in the industry.

SOLUTIONS FOR EVERY PROJECT

Customizable configurations help meet your project specifications.

EASY TO KEEP CLEAN

Smooth wall interior makes it easier to pump and clean. Hydrogen sulfide-creating bacteria can't grow on the walls, so it won't degrade or create harmful gases.



Certifications:



Proceptor GMC UPC
Gravity Grease Interceptor, 2 Manway

Manufacturer's
**lifetime
warranty**

on Zurn Green Turtle interceptors

Proceptor with remote suction option
for above-ground and in-kitchen applications

See our sizing guide
zurn.com/proceptor-sizing

Explore all interceptors
at zurn.com



PROCEPTOR SERIES

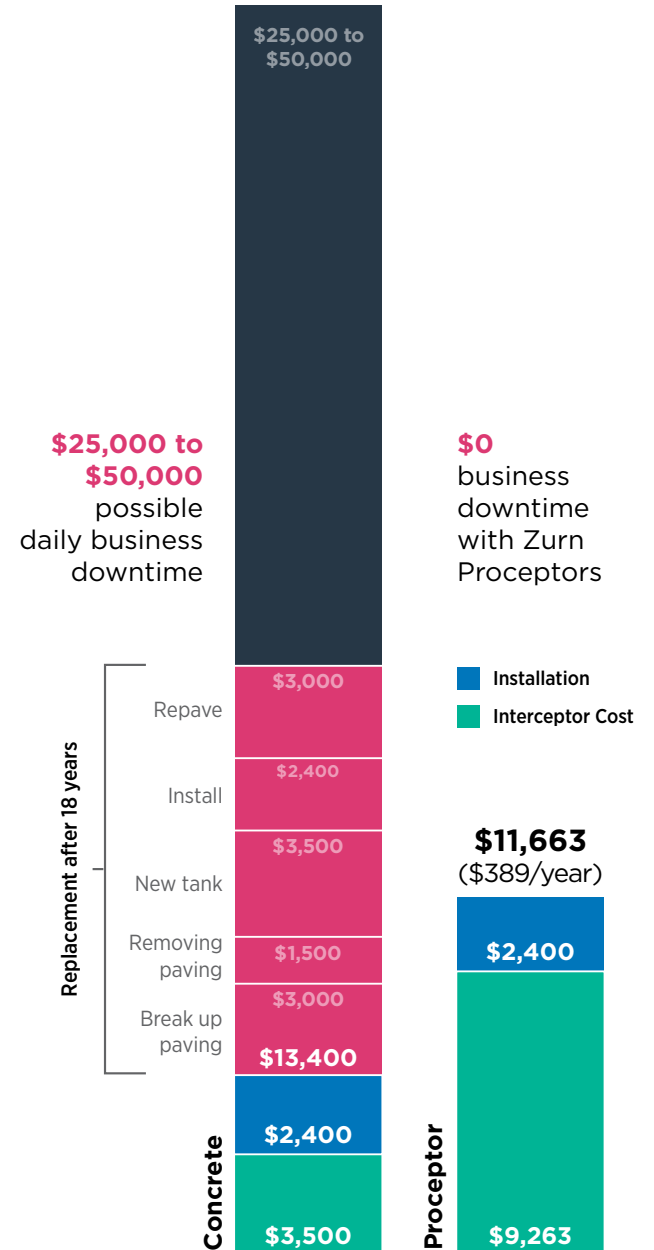
Our fats, oil and grease series of interceptors are engineered for flexible installation, such as free standing, above ground, inside, outside, direct burial in landscape or H-20 traffic-rated areas, high water table regions and custom applications. This agile design eliminates the need for concrete deadmen anchors and cumbersome strapdown systems.



GMC 2000
Proceptor Hydromechanical
Interceptor

ACHIEVE THE LOWEST TOTAL COST OF OWNERSHIP

A failed interceptor can impact operational costs, revenue, productivity, maintenance and upgrades. However, our Proceptor delivers the lowest cost of ownership, as it is designed to endure a harsh, acidic environment. All you need to focus on is getting it set up, rather than potential downtime.

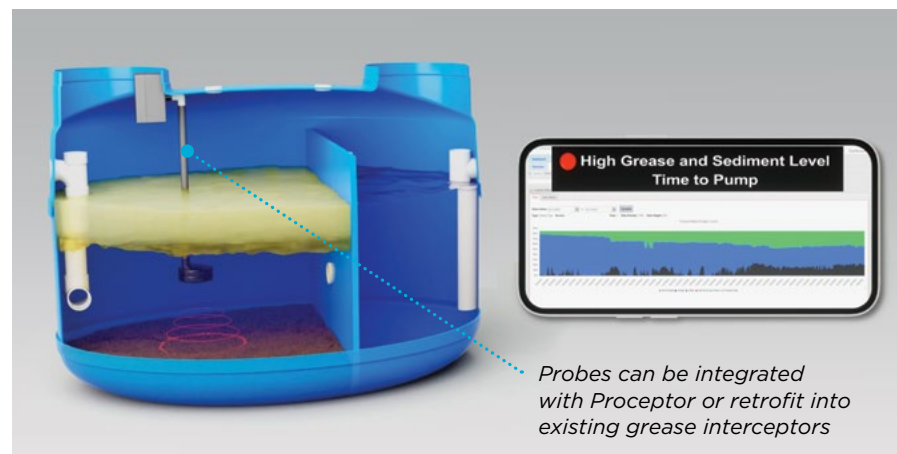


SMARTPRO™ MONITORING SYSTEM

Our SmartPro grease interceptor monitoring helps customers minimize risk, ensure compliance and reduce costs by preventing unnecessary pumping. Install this wireless monitoring system for long-term benefits. In fact, SmartPro is so effective that it impacts changes to legislation, which we address directly with municipalities.



- Typical **3 Year or Less** ROI
- Pump **Only** When Needed
- Multiple Programmable **Alerts**
- Wastewater Backup **Monitoring**
- **Clog-free** Sensors



ZURN WILKINS WATER CONTROL AND BACKFLOW PREVENTERS

Zurn Wilkins time-tested water control solutions are efficient, easy to install, long lasting, and easy to maintain. Known for reliability and lowest total cost of ownership, our products provide trusted quality while saving you and your clients time and money.

BEYOND THE SPEC

PROVEN RELIABILITY

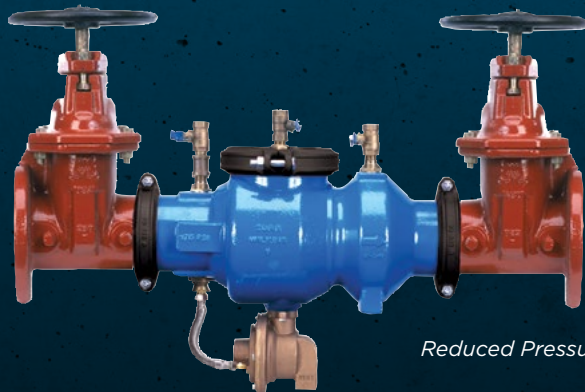
Innovative product solutions minimize repairs and extend the life of the product.

INNOVATION

Best-in-class performance features and compact size are hallmarks of Zurn Wilkins leading designs.

TRUSTED TO PERFORM

Time-tested products exceed industry compliance standards, which gives clients peace of mind.



375A
Reduced Pressure Principle



975XL3
*Reduced Pressure Principle
Backflow Preventer*



500XL3
Pressure Reducing Valve



ZW209
Automatic Control Valve

Explore more products at
zurn.com/products/water-control



BACKFLOW PREVENTION ASSEMBLIES

Zurn Wilkins backflow prevention assemblies are specially configured to protect against backsiphonage and backpressure. Valves are designed for use in low- or high-hazard applications.

Small Backflow Preventers

The 900XL3 series of backflow preventers are easier to install and repair with the shortest all-bronze lay length and modular checks, featuring top access for faster valve repairs. Available in 1/2"-2".



950XL3
Double Check



975XL3
Reduced Pressure Principle

Large Backflow Preventers

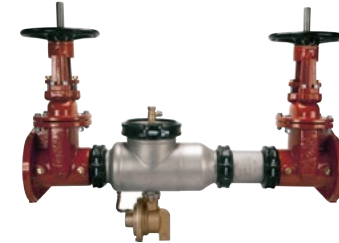
The 300AST series of large backflow preventers provides protection with a corrosion-resistant, stainless steel body design. Multiple shutoff and end connections are available for installation versatility. Patented compound checks offer reliable sealing for superior longevity and flow performance. Available in 2-1/2"-10".



350AST
Stainless Steel Double Check



375AST
Stainless Steel Reduced Pressure Principle



375ASTR
*Stainless Steel Reduced Pressure Valve With
Retrofit Spool Piece for Drop-in Replacements
That Retain Agency Approval at Custom Lengths*

Maintain performance in tighter spaces using our n-pattern 400ST series valves.



475ST
Stainless Steel Reduced Pressure Principle



475STR
Stainless Steel Reduced Pressure Principle



475STV
Stainless Steel Vertical Reduced Pressure Principle

ZURN WILKINS PRESSURE REDUCING VALVES

Get best-in-class flow performance and reliability from the Zurn 500XL3 pressure reducing valve. No other direct-acting pressure reducing valve handles such high flow rates for industrial water lines and commercial systems. With the flattest flow curve on the market today from the patented venturi technology, this valve leads in performance.

BEYOND THE SPEC

HIGHEST FLOW RATES OF ANY PRV

500XL3 has a low falloff of pressure at common operating flow rates, making it an acceptable substitute for small ACVs in many applications.

SMALL FOOTPRINT

Short lay length and compact design fits most applications and simplifies installation.

DURABILITY CUSTOMERS APPRECIATE

All-bronze body and bell construction provide enduring strength, while the stainless steel stem and composite cartridge internals resist corrosion to extend the valve's lifespan.

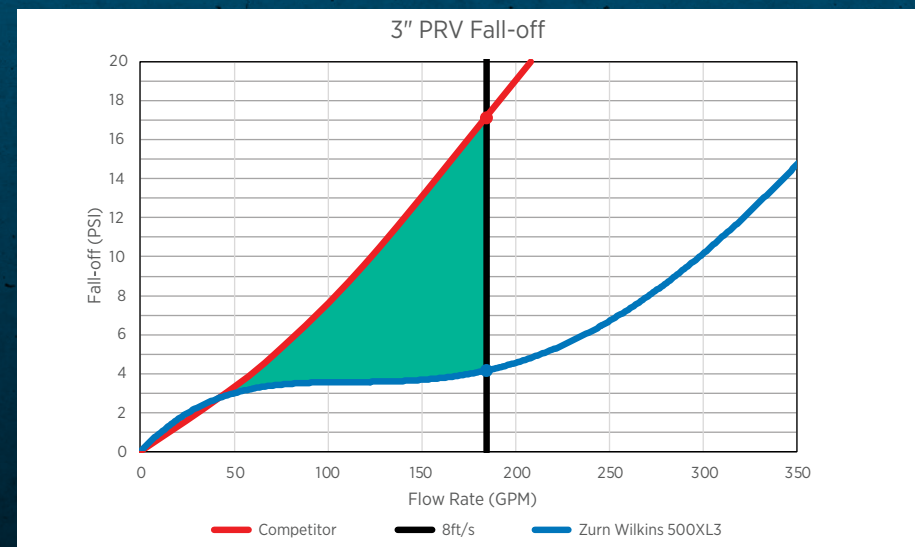
Flat-out
**best
in flow**



500XL3
Pressure Reducing Valve



500XL3 has a 13 PSI pressure advantage at 8ft/sec velocity



Learn more about this lightest valve on the market:
[youtube.com/watch?v=DINczphMEkE](https://www.youtube.com/watch?v=DINczphMEkE)



PRESSURE REDUCING VALVES

Safely reduce high inlet pressure to lower outlet pressure with Zurn Wilkins pressure reducing valves, available in 1/2"-4" sizes with multiple end connection options for commercial, industrial and residential applications.



500XL3



500XL



600XL3

Coming Summer 2024



1-NR3XL



20XL

AUTOMATIC CONTROL VALVES

Count on a constant downstream set pressure with Zurn automatic control valves, designed to react to changing pressure situations. We made the most popular upgrade options standard for easier specification, installation, and maintenance.



ZW209

Pressure Reducing Valve



ZW205

Pressure Relief/Sustaining Valve



ZW206

Solenoid Control Valve



ZW204

Non-modulating Float Valve



ZW207

Excess Pressure Shutdown Valve



ZW218

Slow-closed Check Valve

ZURN WILKINS FIRE PROTECTION

Zurn is your single source for many of your fire protection needs. Our UL listed and technologically advanced backflow preventers, automatic control valves, and fire valves work together to provide reliable performance with the lowest lifetime cost. Save time with installation and offer peace of mind long after.

BEYOND THE SPEC

GET EVERYTHING FROM ONE SOURCE

With the most comprehensive offering on the market, complete your project in one stop, and get dedicated support from start to finish.

FIELD SET PRESSURE

High-performing backflow preventers and pressure reducing valves deliver the widest range of adjustability for your required pressure specifications.

MINIMIZE PRESSURE LOSS

Keep maximum desired pressure to your downstream sprinklers or hose connections.



ZW5000 Series

Pressure Tru® Field Adjustable Pressure Reducing Hose Valve is the easiest valve to change pressure settings in the field while staying accurate and true



950XL3BFSS



ZW209FP

See all the benefits of the
ZW5000 Pressure Tru valve:
youtube.com/watch?v=DomXQiNr6ks



FIRE PROTECTION PRODUCTS

Zurn offers a complete line of products for fire protection applications.



ZW5000
*Field Adjustable
Fire Hose Valve*



ZW5004
*Field Adjustable Floor Control
Fire Valve With Supervisory Switches*



ZW209FP
Fire Protection Pressure Reducing Valve



400ST
Valve Setters



F48OSY
Untapped OS&Y Gate Valve



Full Line of Grooved
Couplings and Fittings



F210R
Riser Check



WBR
Grooved and Flanged Outlet In-building Risers

ZURN FINISH PLUMBING

Choose from one of our top preconfigured packages or configure your own to build your urinal, toilet or lavatory system to meet the exact specifications of your project. With paired performance, Zurn One Systems combine complementary carriers, flush valves, faucets, and fixtures together to create a seamless water-efficient solution. All systems are packaged, palletized, and labeled per your specifications to streamline material handling and installation labor.

BEYOND THE SPEC

EASY SPECIFICATION

Everything that's needed can be grouped together on a single line of your spec.

ONE SOURCE FOR EVERYTHING

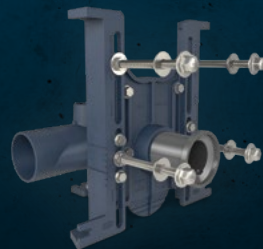
Build your ideal package from a complete line of compatible plumbing products through a single point of contact.

OPTIMAL PERFORMANCE

A Zurn One System means that the products are designed to work optimally together, consistently providing ideal performance.



Z.WC1.S.TM
*Zurn One System Water Closet and
ZER6000AV-ONE-TM Sensor Flush Valve*



*Use the Zurn One Systems
carrier for optimal performance*

Zurn One System's
3-year warranty

is our way of delivering our
promise with every package

Download the Zurn One Systems
brochure to learn more:
zurn.com/zurn-one



ZURN ONE SYSTEMS

Packages are available in the following examples, which can be configured to meet the requirements of your specification.



Z.WC1.S.TM
*Water Closet With
Sensor Flush Valve*



Z.WC1.M
*Water Closet With
Manual Flush Valve*



Z.UR1.S.TM
*Urinal With
Sensor Flush Valve*



Z.UR1.M
*Urinal With
Manual Flush Valve*



Z.L1.S
*Lavatory With
Sensor Faucet*



Z.L1.M
*Lavatory With
Manual Faucet*



Water closet and accessories



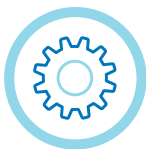
Trim accessories packaged within inner box to protect water closet fixture



Final packout for water closet and brass trim accessories

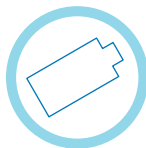
ZURN TOTAL RESTROOM SOLUTIONS WITH HYDRO•X POWER®

Zurn's Hydro•X Power® flush valves and faucets deliver the winning combination of a gear-driven ceramic cartridge and hydropower for a superior restroom experience. We offer a complete line of innovative and sustainable solutions engineered to deliver on performance and help your clients meet sustainability goals. Our next-level smart products add efficiencies in today's workforce.



EZ Gear Technology

Solenoid free, gear-driven ceramic cartridge withstands debris and build-up for less downtime and easy maintenance.



Hydro•X Power®

The water flowing through the fixture creates sustainable performance with renewable, uninterrupted hydropower without the need for constant battery replacements or costly hardwiring.



BEYOND THE SPEC

RELIABLE

Solenoid-free ceramic cartridge technology combined with our industry leading filtered diaphragm withstands the harshest water conditions.

SUSTAINABLE

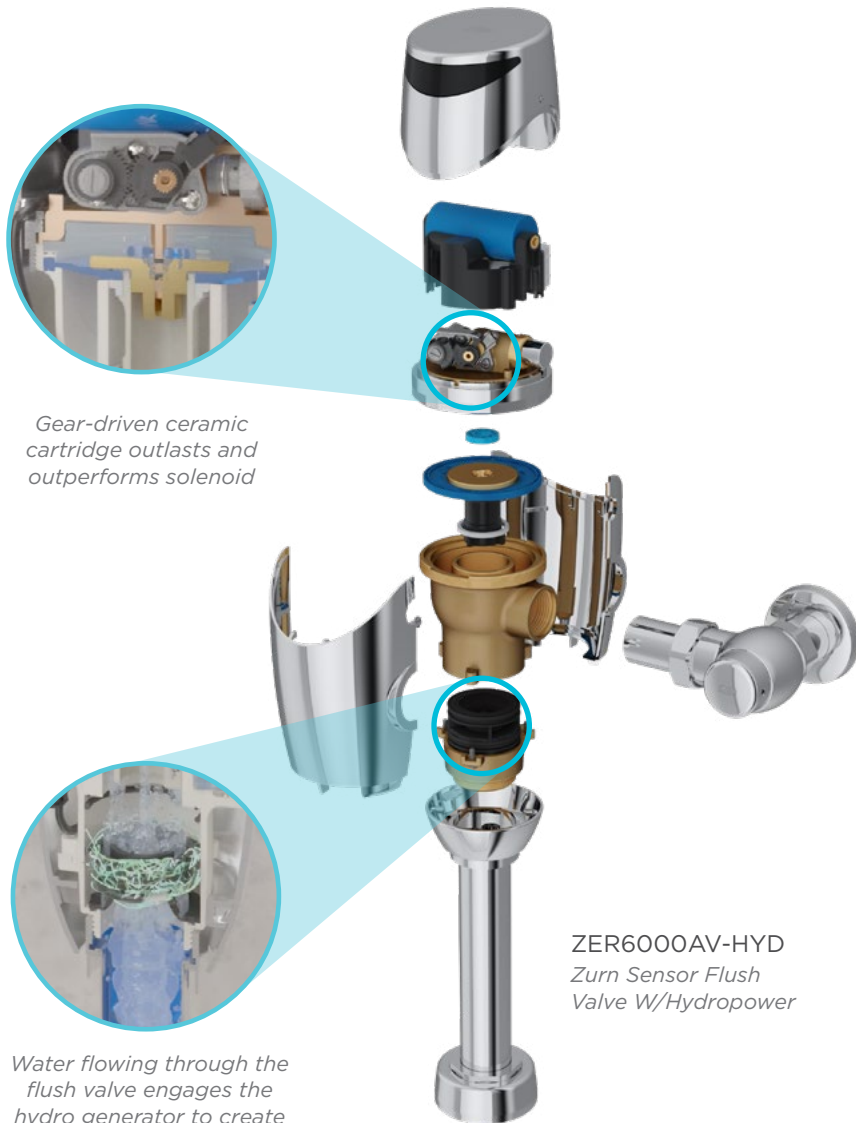
Hydro•X Power delivers reliable, sustainable performance by providing uninterrupted hydropower, reducing battery waste.

THE PERFECT PAIRING

Pair with Hydro•X Power® faucets to maximize sustainable restroom goals.

HYDRO•X
P  **POWER**

ZURN TOTAL RESTROOM SOLUTIONS WITH HYDRO•X POWER



ZURN SENSOR FLUSH VALVES WITH GEAR-DRIVEN CERAMIC CARTRIDGE

Thanks to the dual action of a ceramic cartridge and motor gear-driven operation (EZ Gear technology), these flush valves outperform and outlast other models. Precise, automatic and touchless activation reduces guest visits without a flush, and the true mechanical override button delivers on-demand manual flushing, even when the power goes out. Choose battery operated or hardwired, or upgrade existing restrooms with battery-operated retrofit kits.



NO SOLENOID
**count on
it lasting**



Ceramic Disc Cartridge



Sensor Detection



Brass Body



Gear Driven

BEYOND THE SPEC

LASTING PERFORMANCE

Ceramic cartridge eliminates old actuation technology and contains fewer moving parts, keeping the waterway uninterrupted.

PRECISION

Sensor detects user without delay, optimizing time and water delivery.

EFFICIENT AND SUSTAINABLE

Industry-leading, filtered diaphragms and low-flow rates make these flush valves environmentally responsible, conserving water and saving money.



ZERK-TM
*Top Mount Sensor
Flush Valve Retrofit Kit*



ZERK-SM
*Side Mount Sensor
Flush Valve Retrofit Kit*

Learn more about our Zurn sensor flush valves with gear-driven ceramic cartridge:
youtube.com/watch?v=uXUT7hVy6EM



ZURN SENSOR FAUCETS WITH GEAR-DRIVEN CERAMIC CARTRIDGE

This sensor faucet series also has a gear-driven ceramic cartridge with no solenoids to replace. The standard high-efficiency, low-flow rate and 30-second timeout conserve water to meet sustainability goals. There are three power options to suite your spec, with plug-in, hardwired, and sustainable Hydro•X Power, which delivers renewable power.



Hydro•X Power Technology



AquaSpec® Ceramic Disc Technology



No Solenoid



No Unplanned Downtime
Minimizes waste and downtime with uninterrupted power supplied for the life of the restroom.



Easy Maintenance
Gear-driven ceramic cartridge is less susceptible to debris and buildup than solenoids.



Simplified Install
Reduces upfront costs typically required for high-use applications.



ZG6950
Serio Series® Sensor Faucet



ZG6951
Fulmer Series® Sensor Faucet



ZG6953
Camaya Series® Sensor Faucet



ZG6956
Cumberland Series® Sensor Faucet



ZG6915
AquaSense® Sensor Faucet

BEYOND THE SPEC

NO WATER HAMMER

Slow-closing ceramic cartridge eliminates water hammer.

CONVENIENT FIELD CONFIGURATION

Bluetooth app standard for wireless, point-of-use programmable metering, on-demand or automatic line flushing, timeout and sensor sensitivity settings.

SUSTAINABLE HYDROPOWER

Water flowing through the valve generates reliable, sustainable hydropower for maintenance-free longevity without constant, costly battery replacements.

ZURN SUNDARA[®] HANDWASHING SYSTEM

Influenced by architects and crafted by industrial designers, Sundara simplifies your job by offering a curated selection of countertops, basins, faucets, and soap dispensers to mix and match.

BEYOND THE SPEC

HIGH QUALITY AND ATTRACTIVE

Sundara has the quality engineers have come to expect from Zurn and design options that architects love.

INTEGRATED SYSTEM

We're the only manufacturer to offer a carrier system for solid surface. The integrated rough-in and finished package provides the unmatched strength and stability you expect with the finish you desire.

BUILT FOR LONGEVITY

Made of proprietary engineered stone blend, these sinks are durable and a breeze to keep clean. They're also equipped with a with a stainless steel, vandal-resistant hinged door for easy maintenance access.



Discover the many benefits of Sundara at
[youtube.com/watch?v=R1r1neow-Y](https://www.youtube.com/watch?v=R1r1neow-Y)



SUNDARA HANDWASHING SYSTEM

Meet specifications for any project with the handwashing system that comes in a wide range of configurations. Ask us about custom faucet finish options.



*Serio Series Sensor
Faucet and Soap Dispenser*



*Fulmer Series Sensor
Faucet and Soap Dispenser*



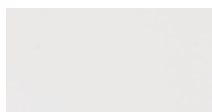
*Camaya Series Sensor
Faucet and Soap Dispenser*



*Cumberland Series Sensor
Faucet and Soap Dispenser*



*Nachi Series Sensor
Faucet and Soap Dispenser*



White



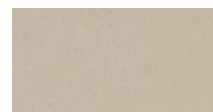
Snow



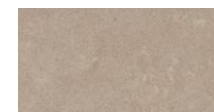
Sea Shell



Alluvium



Sand Storm



Highcliffe



Frost



Z5001
Sundara Reef



Z5003
Sundara Drift



Z5004
Sundara Surf



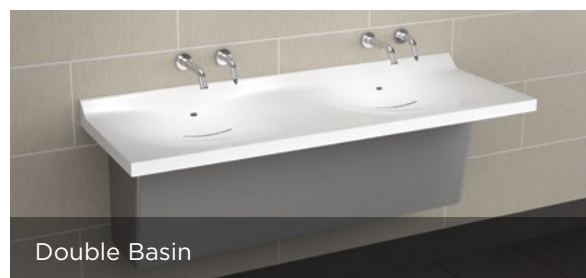
Z5005
Sundara Inlet



Z5006
Sundara Tide



Single Basin



Double Basin



Triple Basin

ELKAY®

BOTTLE FILLING STATIONS AND WATER DISPENSERS

Specifying filtered drinking water upgrades is more efficient with our readily available products and retrofit options that simplify specification. There are in-wall, on-wall, and floor-standing options, and our ezH2O Liv® Pro water dispenser installs within 16" OC 2" X 4" studs. All filtered drinking solutions include a filter that is tested and certified to NSF/ANSI 42, 53 and 401.

BEYOND THE SPEC

RELIABILITY

Our award-winning ezH2O bottle filling stations are built to last, many in vandal-resistant designs.

INDUSTRY-LEADING FILTRATION

All Elkay filters are tested and certified to NSF/ANSI 42 and 53 to reduce lead and other contaminants, and we are first to offer a PFAS (PFOA/PFOS Certified Reduction) filter.

LOW TOTAL COST OF OWNERSHIP

Long-life filters require fewer replacements, and retrofit bottle filling stations are cost-effective, quick solutions for customers.



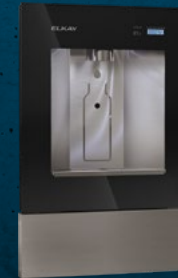
LZS8WSSP-W1
*Enhanced ezH2O Connected
Bottle Filling Station*



DSSBF8S
*ezH2O Floor Standing
Bottle Filling Station*



LZ8WSSMC
*ezH2O Surface Mount
Bottle Filling Station*

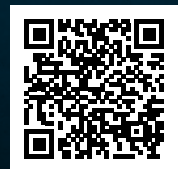


LBWDC00BKC
*ezH2O Liv Pro
in Midnight (also available
in Aspen White)*



LZWS-LRPBM28K
SwirlFlo Fountain

View all bottle filling stations at elkay.com



FILTRATION

Elkay drinking solutions work best with Elkay WaterSentry® filters, which are tested and certified to NSF/ANSI 42, 53 and 401 for lead, microplastics and other contaminants. For renovation projects, add filtration to existing non-filtered units with our retrofit filtration kit.



51600C

*WaterSentry 6,000-gallon Filter
high-capacity compatible
with enhanced units only*



51300C

*WaterSentry 3,000-gallon Filter
for bottle filling stations and Liv Pro*



51299C

*WaterSentry 1,500-gallon Filter
for coolers and fountains*



71300C

*WaterSentry 2,250-gallon Filter
tested and certified to NSF/ANSI 42
and 53 for the reduction of PFAS
(PFOA/PFOS)*



LZS8WSSP

Change filters in 1 minute with our quick-change drop-down wrapper.



Further Reduce Harmful PFAS (PFOA/PFOS)

PFAS are chemicals that enter the environment through production streams and contaminate our waterways. Exposure to PFAS has been linked to kidney, liver and thyroid problems, immune dysfunction and more!

Learn more at
elkay.com/filtration



1 — "Our Current Understanding of the Human Health and Environmental Risks of PFAS", epa.gov/pfas/our-current-understanding-human-health-and-environmental-risks-pfas

ezH2O OUTDOOR BOTTLE FILLING STATIONS AND DRINKING FOUNTAINS

Outdoor tubular bottle filling stations can be installed directly outside, against a wall or in the ground — no electricity required.



LK4420BF1UDBBLU
*ezH2O Outdoor Tubular Bottle Filling Station
Bi-level Pedestal With Pet Station*



4481FPBLU
*Outdoor Foot Pedal
for hands-free operation*



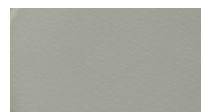
Evergreen



Blue



Black



Gray

In just one year,
one bottle filling station
can eliminate up to
15,000
single-use disposable
plastic bottles from landfills



View more at
elkay.com/outdoor



ZURN

PEX CROSS-LINKED POLYETHYLENE

Zurn non-barrier cross-linked polyethylene (PEX) is manufactured with a special, patented resin material and cross-linking process that can be used for both cold expansion and crimp and insert (oxygen barrier PEX used only with crimp fittings). This means the same tube can be used for either process, simplifying installation and purchase. Our PEX pipe fittings are part of the most comprehensive offering on the market.

BEYOND THE SPEC

FULL LINE CAPABILITY

System allows you to use one pipe for both crimp and expansion systems for a variety of plumbing applications. Zurn provides the most comprehensive offering of PEX product from 3/8" to 2".

SUPERIOR PERFORMANCE

Pipe contains proprietary, custom-engineered polymers with increased antioxidant stabilizers for superior longevity in high chlorine and chloramine environments, including hot water recirculation systems with up to 8ft/sec flow rates.

INDUSTRY-LEADING WARRANTY

25-year warranty backs your work and delivers peace of mind to the building owner.



Straight Length PEX Pipes
Available in 3/8"-1" in red and blue
and 1/2"-2" in white



Coil PEX Pipes
Available in 1/4"-2" in white
and 3/8"-1" in red and blue

Zurn PEX is
23% stronger
than PEXa tubing

Zurn PEX is developed using a newer method than PEXa — our own formulation of the silane method, which creates a denser, stronger, more resilient pipe. It is a little stiffer than some pipe options because it is stronger.

Explore the complete PEX portfolio at
zurn.com/products/pex-cross-linked-polyethylene



ELKAY COMMERCIAL SINKS

For over 100 years, the Elkay brand has been synonymous with commercial-grade stainless steel sinks. They're built in the USA, made of durable, sturdy material that can be used in any industry, such as health care, foodservice, education and more. Plus, they come in a variety of designs, sizes and configurations — some of which are compatible with Zurn carriers for extra support.

BEYOND THE SPEC

DURABLE, LONG-LASTING MATERIAL

Our commercial sinks are made of strong, Type 300 stainless steel in a range of gauges for thickness.

REPAIRABLE FINISH

Many of our Lustertone Classic® sinks, a top choice for classrooms, feature a forgiving finish that stands up to everyday use.

SINKS FOR EVERY APPLICATION

From classrooms to health care facilities and commercial kitchens, we have sinks for all industry needs.



14-3C16X20-2-18X
*Dependabil™ Stainless Steel Three
Compartment Sink With Drainboards
(88" x 25-13/16" x 43-3/4")*



EWSF13026KWSC
*Wall Hung Single Bowl
Surgeon Scrub Sink Kit*

Discover sinks by application type at
elkay.com > Sinks > Application Type



ELKAY AND JUST SINKS

Our Perfect Drain® is a specific drain that can be added to many of our sink models, but some sinks automatically come with them.

General Use Sinks



ELUH1814PD
Lustertone Classic Undermount Sink With Perfect Drain
(20-1/2" x 16-1/2" x 7-7/8")



ELUH2115PD
Lustertone Classic Undermount Sink With Perfect Drain
(23-1/2" x 18-1/4" x 7-1/2")



ELUHAD211555PD
Lustertone Classic Undermount ADA Sink With Perfect Drain
(23-1/2" x 18-1/4" x 5-3/8")

Classroom Sink With Filtration



DRKAD371760LFFC
Lustertone Classic Drop-in Classroom ADA Sink Kit, Faucet/Bubbler Kit and Vandal-resistant Filtration Kit With Filter Status Monitor
(37-1/4" x 17" x 6")

Commercial Kitchen



WNSF81242
Weldbilt® Stainless Steel Floor Mount Single Compartment Scullery Sink
(27" x 27-1/2" x 14")

BEYOND THE SPEC

DRAINS INCLUDED

Lustertone Classic sinks equipped with Perfect Drain come with convenient packaging; all drain parts are included with the sink.

SEAMLESS DRAIN OPENING

Perfect Drains have a hygienic, seamless integral connection and are available on a variety of Elkay sinks. They're unique and compatible with garbage disposals for faster installation.

FLEXIBILITY

This special line of sinks can be installed with or without the curved edge showing, depending on your client's design preference.



LKPD
Perfect Drain

ZURN ELKAY SMART PRODUCTS

Help building owners and maintenance teams prevent major repairs, detect leaks and schedule maintenance only when needed by using our smart product collection. This line of products wirelessly connects to an online portal so you can anticipate problems before they start. The products wirelessly monitor usage trends, water consumption and possible issues and can be customized to any building type. Building owners gain a better sense into their plumbing systems for a smarter operation.

BEYOND THE SPEC

PREDICT AND PREVENT

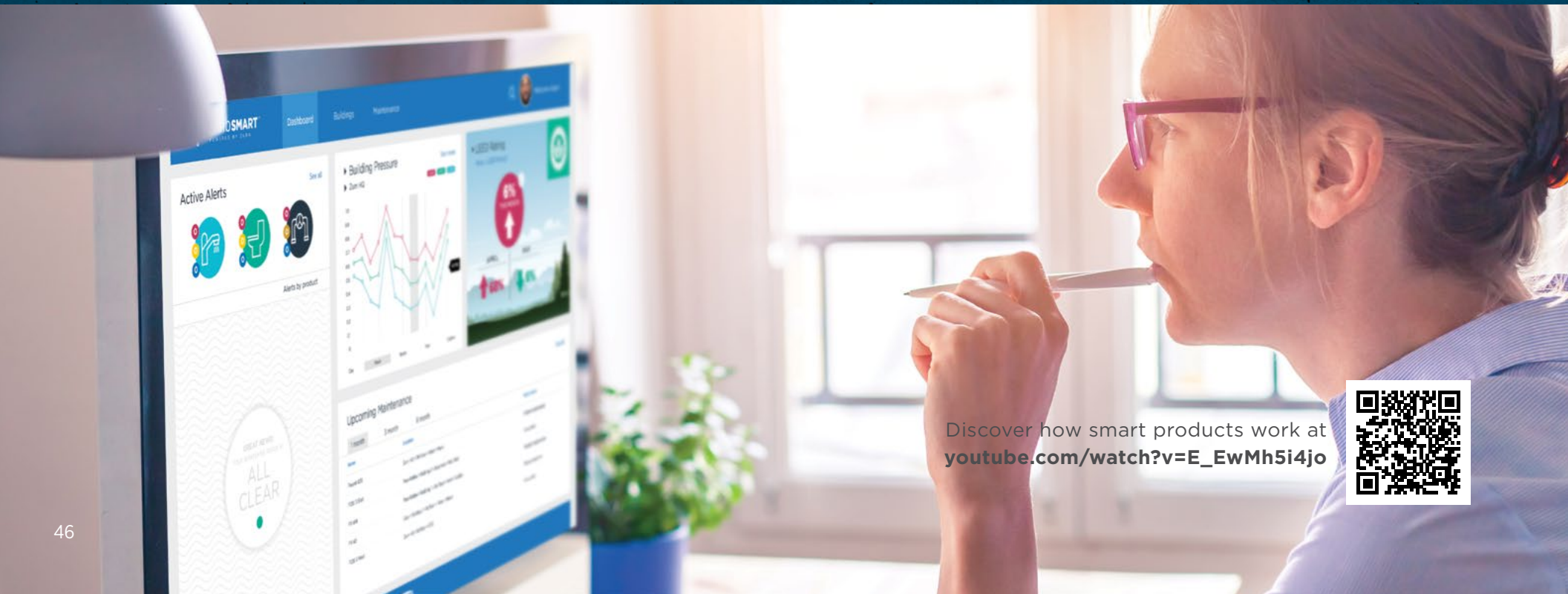
Real-time insights provide the ability to predict when maintenance is needed and prevent costly downtime.

ACCESS DATA FROM ANYWHERE

Our plumbSMART portal offers 24/7 access to product information and trends.

SECURE DATA

Fully encrypted data uses a wireless network to keep data secure.



Discover how smart products work at
[youtube.com/watch?v=E_EwMh5i4jo](https://www.youtube.com/watch?v=E_EwMh5i4jo)



SMART PRODUCTS

We currently offer the following smart products within an ever-growing portfolio.



LZS8WSSP-W1

Elkay Enhanced Connected ezH2O Bottle Filling Station With High-capacity Filtration and Quick Filter Change Wrapper



ZG6950-W2

Zurn Sensor Faucet with line purge capability



ZER6000AV-W2

Zurn Connected Side Mount Sensor Flush Valve for Water Closets



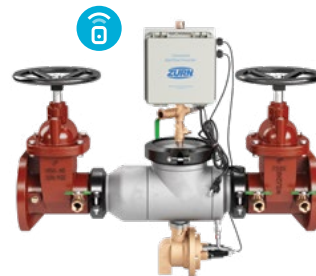
Z-LIGHT-W1

Zurn Smart Occupancy Lights indicate stall status so guests can easily spot open stalls and avoid delays



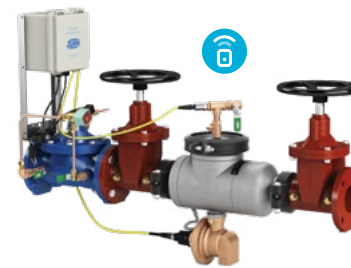
4640 SmartPro G2 Wired Alarm

Zurn SmartPro RF Radio Frequency Monitoring and Alarm System



375ASTW1

Zurn Wilkins Smart Backflow Preventers With Wireless Monitor transmits pressure change and relief valve discharge activity via text or email



FCISAST

Zurn Wilkins Smart Flood Control System provides automatic shut-off of continuous relief valve discharge, plus transmits relief water discharge and system pressure data



LoRa Gen 1 Ethernet

is the Zurn gateway that securely transmits encrypted data between smart products and the cloud. Connection available as LAN or LTE.

FIND A REP:

zurn.com/rep-locator

GET CUSTOMER SUPPORT:

zurn.com/support

elkay.com/support

TRY OUR CALCULATOR AND OTHER TOOLS:

zurn.com/tools

ABOUT ZURN ELKAY WATER SOLUTIONS

Headquartered in Milwaukee, Wisconsin, Zurn Elkay Water Solutions is a growth-oriented, pure-play water business that designs, procures, manufactures, and markets what we believe is the broadest sustainable product portfolio of solutions to improve health, human safety, and the environment. The Zurn Elkay product portfolio includes professional grade water control and safety, water distribution and drainage, drinking water, finish plumbing, hygienic, environmental and site works products for public and private spaces.



Form No. 100-053, 6/24 | Patent zurn.com/patents
US 1.855.ONE.ZURN CANADA 1.877.892.5216
ZURN.COM

Milwaukee, 511 W Freshwater Way | Milwaukee, WI 53204
1.855.ONE.ZURN | Zurn.com | ©2024 Zurn-Elkay Water Solutions