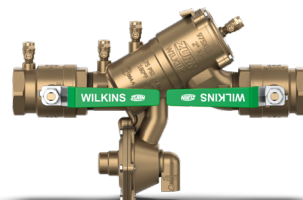




# Waterworks Solutions

Water Control Products for Waterworks



ZURN.COM US 1.855.ONE.ZURN CANADA 1.877.892.5216

# Time Tested, Contractor Approved

Zurn Elkay Water Solutions is a recognized leader in commercial, municipal and industrial markets. Zurn Wilkins is one of America's most trusted names in pressure reducing valves and backflow preventers, and offers products that are easy to maintain and have the lowest cost of ownership.

Value Proposition.....	3
Total Waterworks Solutions.....	4
Backflow Preventers .....	6
Automatic Control Valve .....	8
Pressure Reducing Valves .....	10
Fire Valves.....	11
Grooved Couplings and Fittings.....	11
Additional Products .....	11

# How can Zurn Wilkins Waterworks Solutions help you?

## Here's what our products offer:

- Complete line of control valves, backflow preventers and pressure regulating valves
- Designed for installation in tight spaces
- Simple, easy installations save time
- Multiple configurations for versatility in installing
- Low maintenance, easy to clean and repair
- Superior low lifecycle cost
- Superior field technical and sales support
- Superior product bundling under one trusted brand
- Industry-leading on-time delivery and availability
- Industry-leading customer and technical support
- Theft-deterrent product options
- Safe Drinking Water Act compliant







# Total Waterworks Solutions

## 1. Potable Storage



ZW222 Altitude Control Valve



48 NRS Gate Valve

## 2. Potable Pump Station



ZW205 Pressure Relief/Pressure Sustaining Control Valve

## 3. Potable Pressure Reducing Station



ZW209 Pressure Reducing Control Valve



FSC Flanged Cast Iron Strainer

## 4. Fire Protection System



ZW209FP Pressure Reducing Control Valve for Fire Protection Systems



350ASTDA Stainless Steel Double Check Detector Assembly

## 5. Potable Distribution System



ZW209E Pressure Reducing Valve with Solenoid Shut-Off



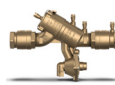
375AST Stainless Steel Reduced Pressure Principle Assembly



ZW206 Solenoid Control Valve



500XL3F Pressure Reducing Valve



2-975XL3 Reduced Pressure Principle Backflow Preventer



In Building Riser

## 6. Reclaimed Water System



ZW209Q Pressure Reducing Valve with Downstream Surge Protection



375XL

# Zurn Wilkins Backflow Preventers, 2 ½ - 12 in.

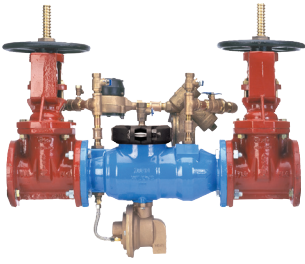
Our backflow preventers lead the industry in ease of installation, low maintenance costs and reliability under pressure. They're cost-effective to repair and have the lowest lifecycle costs of any manufacturer. Available in ductile iron and stainless steel, they're ideal for new construction, retrofit or replacement. Assemblies available in flange x flange, flange x groove and groove x groove end OS&Y, post indicator or butterfly configurations. UL®, C-UL®, FM®, FCCCHR@USC®, CAS, ASSE® approved, AWWA compliant.



## **Zurn Wilkins Resilient Seated Shut-off Valves**

Resilient, Safe Drinking Water Act compliant seated gate valves are made in compliance with AWWA C515 and C550. Standard stainless steel stems provide greater strength and corrosion resistance. Available with flanged, grooved or flanged x grooved end connections in sizes 2 ½ - 12 in.





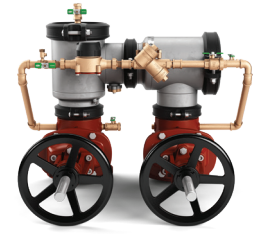
**375DA**  
Reduced Pressure  
Detector Assembly



**375AST**  
Reduced Pressure  
Principle Backflow Preventer  
with Stainless Steel Body



**350A**  
Double Check  
Backflow Preventer



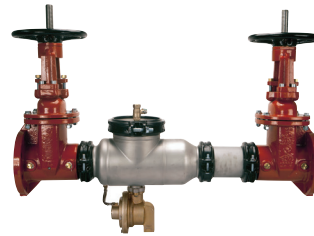
**450STDA**  
Double Check Detector  
Backflow Preventer



**475STDAV**  
Stainless Steel RP  
Principle Vertical  
Assembly



**475ST**  
Reduced Pressure  
Principle Assembly



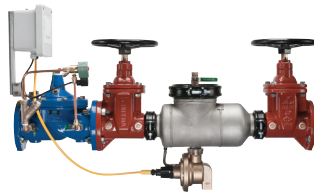
**375ASTR**  
Replacement Reduced  
Pressure Principle  
Assembly



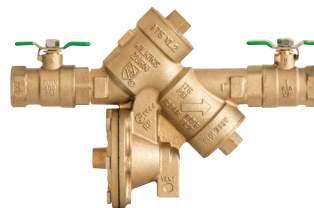
**975XLHBM**  
Hydrant Backflow  
Meter Assembly



**RPHBM**  
Hydrant Backflow Meter



**FCIS**  
Connected Flood  
Control System



**975XL2**  
Reduced Pressure  
Principle Assembly



**975XL3**  
Reduced Pressure  
Principle Backflow  
Preventer



**975XLST**  
Backflow Preventer



**950XL3**  
Backflow Preventer



**375XL**  
Backflow Preventer



**950XLTDABFSS**  
Backflow Preventer

# ZW200 Automatic Control Valve Series

## What sets Zurn Wilkins ACVs apart?

Valve design focused on simplifying maintenance and repair

- Isolation valves allow for service and maintenance without shutting down the system
- Union connections simplify pilotry repairs
- Hex on main valve stem allows for use of standard tools

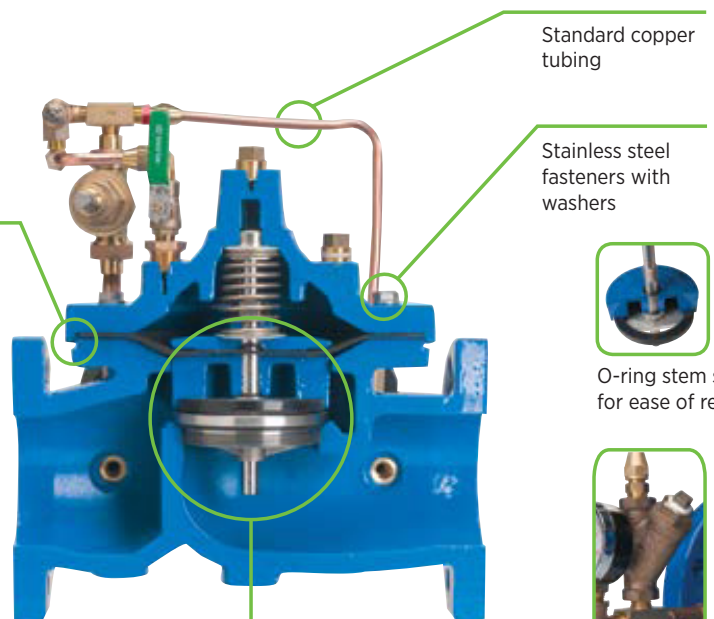
Standard features enhance the total cost of ownership

- Pressure gauges allow for constant system monitoring
- Epoxy coating lengthens service life
- Stainless steel hardware resists corrosion
- Simplified maintenance with readily available repair kits



ZW209SH, with stainless braided hose option

Fully coated lip centers cover during maintenance reassembly



Standard copper tubing

Stainless steel fasteners with washers



O-ring stem seals for ease of repair



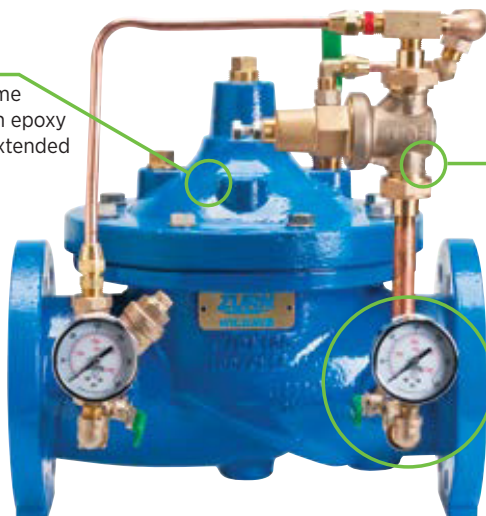
Wye strainer comes standard, allowing quick and simple debris removal

Top and bottom guided diaphragm assembly for even sealing and repeatability



Hex on stainless steel stem simplifies maintenance

All valves come standard with epoxy coating for extended service life



Union connections simplify pilotry repairs

Isolation valves and pressure gauges come standard for commissioning and service



ZW209SP, with stainless steel pilotry option

Identical lay length with leading manufacturers for retrofit opportunities

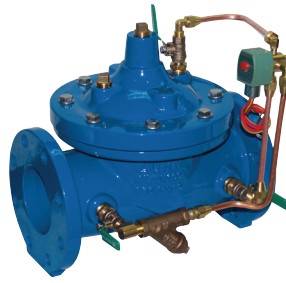




**ZW205**  
Pressure Relief/Pressure Sustaining Valve



**ZW209**  
Pressure Reducing Valve



**ZW206**  
Solenoid Control Valve



**ZW204**  
Non-Modulating Float Valve



**ZW221**  
One Way Altitude Level Control Valve



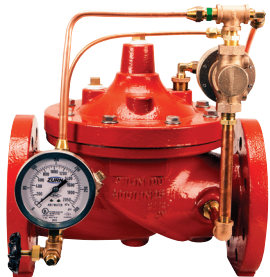
**ZW222**  
Two Way Altitude Level Control Valve



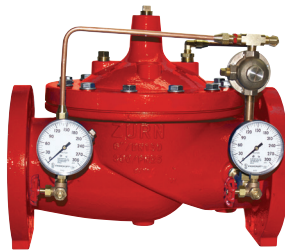
**ZW207**  
Excess Pressure Shutdown Valve



**ZW218**  
Slow Closed Check Valve



**ZW205FP**  
Fire Pump Relief Valve



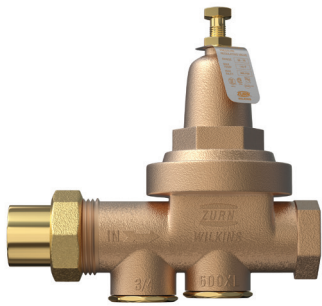
**ZW209FP**  
Fire Protection Pressure Reducing Valve



**ZW215FP**  
Fire Pump Suction Control Valve

# Pressure Reducing Valves

Used on potable water systems to reduce high inlet pressure to a lower outlet-set pressure. Zurn Wilkins valves are corrosion resistant with flexible connections and an internal bypass that prevents pressure buildup caused by thermal expansion.



**600XL**  
Pressure Reducing Valve



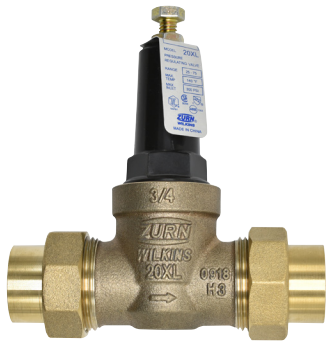
**500XL3**  
High Capacity Pressure Reducing Valve



**4-500XL3F**  
Flanged Pressure Reducing Valve



**NR3XL**  
Pressure Reducing Valve



**20XL**  
Pressure Reducing Valve

# Fire Valves



**ZW5000, ZW5004**  
2 1/2" Pressure-Tru®  
Field Adjustable  
Pressure Reducing  
Hose Valve



**ZW4000, ZW4004**  
Pressure-Tru Fire  
Hose Valve



**WBR**  
In-Building Risers



**F210R**  
Fire Riser Check  
Valves

# Grooved Couplings and Fittings



**FP23**  
Couplings



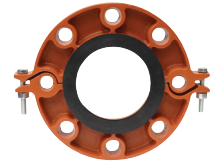
**FP52**  
Elbows



**FP53**  
Tees



**FP63**  
Mechanical Tees



**FP8**  
Grooved Flanges



**FP51**  
Grooved Reducers



**FP56**  
Crosses



**FP3**  
Caps



**Also Available in Galvanized**  
Fittings and couplings available in  
galvanized steel

# Additional Products



**8-48, 8-48OSY**  
Gate Valve



**8-MJFS**  
Valve Setter



**RFK4X3**  
Setter Adapters



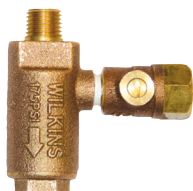
**FSC**  
Wye Strainers



**700XL**  
Dual Check Valves



**40XL2**  
In-Line Check Valve



**ZWFR**  
Freeze Relief Valves



**TG-5**  
Test Kits



**SXL**  
Wye Strainers

