



THE SUNDARA™ HANDWASHING SYSTEM

Behold the Balance of Brawn, Brains & Beauty



BRAWN, BRAINS & BEAUTY

Influenced by architects and crafted by audacious industrial designers, Sundara – a Sanskrit term meaning “beautiful” – is a bold approach to the handwashing system. We’ve unified seamless countertops, basins, faucets, and soap dispensers for a modern concept that elevates the restroom experience through a combination of style and substance.





EVERYTHING THAT COUNTS IN THE RIGHT AMOUNTS

For too long, restrooms have had to compromise performance for elegance, or vice versa. An *either/or* proposition. We interviewed more than 150 architects to understand that they want an *and*. Powerful performance and high-minded design. They want a blend of both. They choose not to choose.

The Strength of Simplicity

Sundara's performance stems from Zurn One: a system that streamlines the restroom ecosystem through a single-source manufacturer. Because Zurn develops all of Sundara's fixture components, we are able to reduce installation time, increase effectiveness, and maintain reliability.



Unsurpassed Durability

Zurn's EZCarry® carriers are built to last. They provide unmatched strength and stability for proven performance that's head and shoulders above traditional carriers.



Impressive Versatility

We've made Sundara's installation adaptable to almost any application. Whether it's a new construction or a retrofit, the process is simple and straightforward to reduce labor and ensure consistent performance.



BETTER OPERATION THROUGH COOPERATION

Many handwashing systems combine parts and pieces from various manufacturers which may not work perfectly together. The result: potential frustration after installation. Such is not the case with Sundara. When components are consistent, peace of mind is a constant.

More Input for a Better Output

Sundara is the culmination of more than 10,000 research hours, 150 architect interviews, and 26 trial prototypes. We asked questions, learned lessons, and put that knowledge to work. The result? The most user-friendly, design-forward handwashing product on the market today.



“Sundara systems are different because they bring a harmonized, clean look to the commercial restroom. These unique lavatory platforms will open architects’ minds to new design possibilities.”

DAVID ROTMAN, ROTMAN ARCHITECTURE

YOU ASKED, WE DELIVERED

We came to appreciate what people value in a handwashing system: personal space, easy soap dispensing, and enough room to place their things. Sundara's focus on practicality makes for a fresh, functional statement.



Reimagining the Restroom

Sundara enables designers to breathe new life into a space that is often overlooked. Its modern lines, minimalistic drains, fashionable faucets, sophisticated soap dispensers, and refined ergonomic features deliver charming—yet useful—touches. Your vision is part of our offering. Find the basin and faucet combination for your environment.



Class A Restroom



Education



Retail



AGE WITH GRACE

Sundara sustains its good looks with a solid surface material that is scratch and stain resistant. It maintains cleanliness with a low-profile, no-splash configuration.

Sundara Reef

The Sundara Reef lavatory offers a timeless design for commercial restrooms with a wide opening, gently sweeping basin, and a broad back shelf for personal item storage.



Sundara Reef Single Basin Configuration

These 30" wide Sundara basins provide an updated option for the typical wall-mount lavatory installation. The expansive basins prevent splashing and provide ample space for handwashing, while the modern designs refresh any commercial restroom space.



Sundara Reef Double Basin Configuration

Our research showed that people value their personal space, and they want the same in their sinks, so our multi-basin Sundara units combine the seamless designs with individual basin configurations. This gives users the space they want while maintaining a timeless, clean aesthetic.



Sundara Reef Triple Basin in White paired with the Alamere Series™ Sensor Faucet and Soap Dispenser

Sundara Drift

Sundara Drift presents an organic design in a contemporary form with a sweeping basin and a soft transition to the integral backsplash. Paired with Zurn's new wall-mount sensor faucet and soap dispenser, Drift provides an exceptional design for high-end commercial environments.



Sundara Drift Single Basin Configuration

The organic design of the Drift basin offers a gently-curving, low-profile design that is smooth and functional, with integral overflows and a gradually rising backsplash to contain water.



Sundara Drift Double Basin Configuration

Drift multi-basin configurations flow gently from one basin to the next, giving the impression of a gently-rolling wave while still maintaining the personal space that users desire.



Sundara Drift Triple Basin in White paired with the Teviot Series™ Sensor Faucet and Soap Dispenser

Sundara Tide

Sundara Tide presents an organic design in a contemporary form with a sweeping basin and smoothly rounded corners. Paired with Zurn's new deck-mount sensor faucet and soap dispenser, Tide provides an exceptional design for educational environments.



Sundara Tide Single Basin Configuration

The organic design of the Tide basin offers gently-curving corners and a low-profile design that is smooth and functional, with integral overflows to contain water.



Sundara Tide Double Basin Configuration

Tide multi-basin configurations flow gently from one basin to the next, giving the impression of a gently-peaking wave while still maintaining the personal space that users desire.



Sundara Tide Triple Basin in White paired with the Cumberland Series™ Sensor Faucet and Soap Dispenser

Sundara Surf

Bold, yet effortless, Sundara Surf takes on the restroom design with sloping lines and a wide basin. It gives users personal space and operates with the wave of a hand. Pairs with our stainless steel shrouds to conceal the plumbing and complete the look.



Sundara Surf Single Basin Configuration

Seamless, sloping basin provides a modern, user-friendly appeal for a positive user experience.



Sundara Surf Double Basin Configuration

The multi-basin configuration leaves enough breathing room for users to wash up without splashing all over.



Sundara Surf Triple Basin in White paired with the Camaya Series™ Sensor Faucet and Soap Dispenser

Sundara Inlet

Fluid and flawless, Sundara Inlet is a conduit to style and substance. Water stays contained within the sweeping, deep-set basin for a pleasant user experience and easy maintenance.



Sundara Inlet Single Basin Configuration

From the basin to the plenum, the spacious single configuration and wall-mount design gives the user extra breathing room. Comes in white, or contact Zurn to custom order your own design.



Sundara Inlet Double Basin Configuration

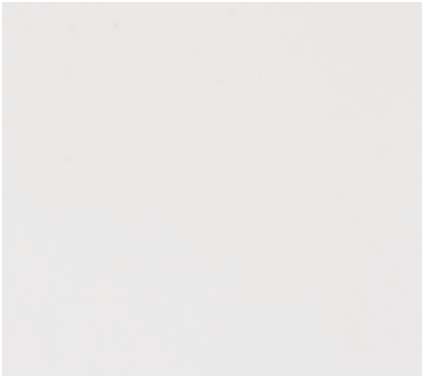
It's all about the user experience with Inlet. This multi-basin configuration gives users their personal space. The deep sweeping lines whisk water into the bowl instead of splashing all over the place and other people.



Sundara Inlet Triple Basin in White paired with the Fulmer Series™ Sensor Faucet and Soap Dispenser

Decisions of Distinction

The Sundara handwashing system reinvents the commercial restroom space with a selection of innovative designs combinable with a curated selection of sensor faucets and soap dispensers. There are plenty of options available – seven colors, four finish options – that allow you to create your own look.



White



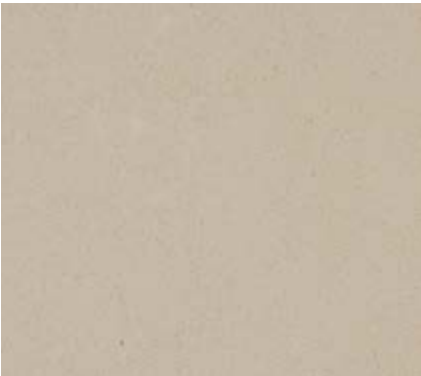
Snow



Sea Shell



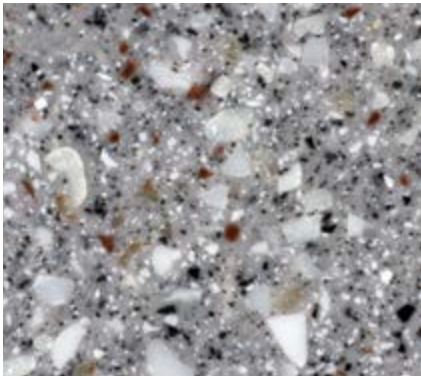
Alluvium



Sand Storm



Highcliffe



Frost

Sundara Reef in White paired with the Serio Series™
Sensor Faucet and Soap Dispenser



Collaboration Comes in Many Forms

Choose from a variety of faucets and soap dispensers to create the perfect pairing. You also have options in flow rate, configuration, and four finish options.



Chrome



Brushed Nickel



Polished Nickel



Polished Brass



Z6950-XL-S AQUA-FIT®

[Serio Series™ Sensor Faucet](#)

Z6950-SD

[Serio Series™ Sensor Soap Dispenser](#)

Functionality doesn't fall short on elevated style with Serio. Achieve high performance through a contemporary, low maintenance faucet. The streamlined look complements practically any environment without compromise. Available in multiple flow rates, finishes and power configurations.

The soap dispenser's touchless sensor only takes a gentle wave, rounding off Serio's effortless appeal. With four finishes and a refillable liquid soap container, you get your fill of options.

Pairs well with all Zurn solid surface units.



Z6951-XL AQUA-FIT®

Fulmer Series™ Sensor Faucet

Z6951-SD

Fulmer Series™ Sensor Soap Dispenser

(Sigh) Create a moment of pause in a high traffic environment. Fulmer delivers graceful refinement that won't fade into the background or over time. Available in multiple finishes, flow rates, and power configurations, you'll have options at your fingertips.

What happens when Zurn and Bobrick put their heads together for the soap dispenser? This brainchild. The sensor liquid soap dispenser fills from the top for convenient maintenance. Select from four finishes.

Pairs best with Reef and Inlet solid surface units.



Z6952-XL

Teviot Series™ Sensor Faucet

Z6952-SD

Teviot Series™ Sensor Soap Dispenser

Perhaps the most iconic in design, Teviot brings something different to the restroom experience. Free flowing water cascades from the wall spout, serenely as a spring-fed waterfall. Users will naturally take notice. Available in multiple finishes, accessories and flow rates.

The soap dispenser is on par with its splendor. Select from three finishes. Battery operated.

Pairs best with Drift solid surface units.



Z6953-XL

Camaya Series™ Sensor Faucet

Z6953-SD

Camaya Series™ Sensor Soap Dispenser

Stand out from standard. From clean lines to an even cleaner environment, Camaya makes a minimalist move seem like a grand gesture. With its hygienic hands-free operation, it checks all of the boxes for a sophisticated restroom environment. Available multiple finishes, accessories and flow rates.

The soap dispenser is just as novel as its faucet counterpart. Select from three finishes. Battery powered.

Pairs best with Reef and Surf solid surface units.



Z6954-XL

Alamere Series™ Sensor Faucet

Z6954-SD

Alamere Series™ Sensor Soap Dispenser

Its presence alone commands attention. Alamere optimizes flow through a bold composition. The straight edges and rolling angles strike a perfect balance that won't overpower nor underwhelm. Comes in multiple finishes, accessories and flow rates.

In line with the faucet, the soap dispenser creates a tiered silhouette to complete the set. Select from three finishes.

Pairs best with Reef solid surface units.



Z6956-XL

Cumberland Series™ Sensor Faucet

Z6956-SD

Cumberland Series™ Sensor Soap Dispenser

Timeless really can impress. Cumberland adds elegance without an expiration date on its aesthetics. Its smooth curves and seamless body make it easy to clean, enhancing the appeal. Available in multiple finishes, accessories and flow rates.

Equally as smooth in appearance and operation, the soap dispenser completes the pairing. Select from three finishes. Battery operated.

Pairs best with Tide solid surface units.



Z6957-XL

Nachi Series™ Sensor Faucet

Z6957-SD

Nachi Series™ Sensor Soap Dispenser

No frills. No fuss. Sleek and simple never looked so good or worked so well. Nachi's wall-mount design commands the space without monopolizing it. It's easy on the eyes and even easier to maintain. Plus, with multiple finishes and low flow performance, you'll leave your personal touch, not a large footprint.

Paired with the Nachi faucet, this sensor liquid soap dispenser creates a clean, contemporary look that matches the Sundara Drift basin. Select from four finishes.

Pairs best with Drift solid surface units.

A Faucet for Every Environment

Wellness to fitness to every business in between,
narrow down the right solution for your next project.



Z81000-XL
AquaSpec® Single Control Faucet

Hospitality

Attention to detail goes beyond leaving a chocolate on the pillow. Sustainable efforts significantly keep costs down and customers happy when it comes to hospitality. Low-flow faucets save water and on monthly bills.

Pairs best with Reef, Surf, Tide and Inlet solid surface units.



Z81104-XL
AquaSpec 4" Centerset Faucet
with Blade Handles

Healthcare

Safety, sanitation, space, the healthcare industry requires advanced features beyond aesthetics. AquaSpec gooseneck faucets provide easy access, the highest level of durability, and hygiene compliance for surgical scrub applications.

Pairs best with Reef, Surf, Tide and Inlet solid surface units.



Z812B4-XL
AquaSpec 4" Centerset
Gooseneck Faucet



Z86100-XL

AquaSpec Single Basin
Metering Faucet



Z86500-XL

AquaSpec Centerset
Metering Faucet



Z81101-XL

AquaSpec 4" Centerset Faucet
with Lever Handles



Z86100-SD

AquaSpec Manual Soap Dispenser

Education

We have your answer to environments that take on a lot of wear and tear. Constructed of durable solid cast brass, these brilliant faucets withstand the high traffic, cleaning chemicals and vandalism school systems introduce. Even better, metered cartridges reduce water consumption without sacrificing performance.


Pairs best with Reef, Surf, Tide and Inlet solid surface units.

Recreation and Wellness

For health clubs and sports arenas, the entire business revolves around the customer experience. Keep the restroom operating in tiptop shape with features that put the user first. Zurn's AquaSpec faucets provide the highest level of durability for commercial applications with cast-brass bodies and lifetime warrantied ceramic disc cartridges.

Pairs best with Reef, Surf, Tide and Inlet solid surface units.





When we were first introduced to the Sundara handwashing system, we hadn't seen anything like it. We knew we wanted it for our restrooms without even realizing the full capabilities. The simplicity of what you see on the outside coupled with the robust hanger system you don't see are consistent with the quality and reputation of being a Zurn product.

JAMES F. BOGRETTE, AIA
PRINCIPAL





ZURN INDUSTRIES, LLC 511 West Freshwater Way, Milwaukee, WI 53204, 855.663.9876
In Canada: **ZURN INDUSTRIES LIMITED** 7900 Goreway Drive, Unit 10, Brampton, Ontario L6T 5W6, 877.892.5216
Form No. 240-150, 7/18



US 1.855.ONE.ZURN CANADA 1.877.892.5216 ZURN.COM