



# Automatic Control Valve Parts

## Table of Contents

|  |              |
|--|--------------|
| <b>ACV, MAIN VALVE 11/4"-10" .....</b> | <b>2</b>     |
| <b>ACV, REPAIR KITS.....</b>           | <b>4</b>     |
| <b>PILOTS.....</b>                     | <b>5</b>     |
| <b>38-PV-PRD, 38-PV-PRD.....</b>       | <b>6</b>     |
| <b>12-PV-PRD, 12-PV-PRDST.....</b>     | <b>8</b>     |
| <b>34-PV-PRD, 34-PV-PRD.....</b>       | <b>8</b>     |
| <b>NR3XLHRSCDULU .....</b>             | <b>10</b>    |
| <b>38-PRXL, 38-PRST .....</b>          | <b>12</b>    |
| <b>12-PV-RLF, 12-PV-RLFST.....</b>     | <b>14</b>    |
| <b>12-PV-ACL-2, 12-PV-ACLST-2.....</b> | <b>16</b>    |
| <b>12-PV-ACL-3, 12-PV-ACLST-3.....</b> | <b>18</b>    |
| <b>PV-FNM.....</b>                     | <b>20</b>    |
| <b>PV-SOL3.....</b>                    | <b>22</b>    |
| <b>ACV ACCESSORIES.....</b>            | <b>23-24</b> |
| <b>ACV FITTINGS.....</b>               | <b>24-26</b> |

For more information please visit [www.zurn.com](http://www.zurn.com)

# MODEL ZW200 ACV Main Valve

## (1 1/4" to 10")



\*This product contains a weighted average lead content less than 0.25% for wetted surfaces.

| ITEM NO. | DESCRIPTION              | 1 1/4"    | 1 1/2"     | 2"         | 2 1/2"       | 3"          | 4"         | 6"         | 8"         | 10"        |
|----------|--------------------------|-----------|------------|------------|--------------|-------------|------------|------------|------------|------------|
| 1        | COVER CENTER PLUG        | 558-7     | 558-7      | 558-7      | 558-7        | 558-7       | 5510-7     | 5510-7     | 5510-7     | 5510-7     |
| 2        | COVER BOLT               | 2005-11   | 2005-11    | 2006-11    | 2007-11      | 2008-11     | 2009-11    | 2010-11    | 2011-11    | 2012-11    |
|          | THREAD X LENGTH          | 5/16-18X1 | 5/16-18X1  | 3/8-16X1   | 7/16-14X1.25 | 1/2-13X1.25 | 1/2-13X2   | 5/8-11X2   | 3/4-10X2.5 | 7/8X9-3    |
|          | COVER BOLT WASHER        | 2005-14B  | 2005-14B   | 2006-14B   | 2007-14B     | 2008-14B    | 2008-14B   | 2010-14B   | 2011-14B   | 2012-14B   |
| 3        | COVER NUTS               | —         | —          | —          | —            | —           | —          | —          | 2011-9A    | 2012-9A    |
|          | THREAD                   | —         | —          | —          | —            | —           | —          | —          | 3/4-10     | 7/8-9      |
| 4        | COVER SIDE PLUG          | 101-7B    | 101-7B     | 101-7B     | 558-7        | 558-7       | 5510-7     | 5510-7     | 2011-7     | 2011-7     |
| 5        | COVER                    | 2005-3    | 2005-3     | 2006-3     | 2007-3       | 2008-3      | 2009-3     | 2010-3     | 2011-3     | 2012-3     |
| 6        | COVER STEM GUIDE BEARING | 2005-2SS  | 2005-2SS   | 2006-2SS   | 2007-2SS     | 2008-2SS    | 2009-2SS   | 2010-2SS   | 2011-2SS   | 2012-2SS   |
| 7        | UPPER SPRING DISC        | —         | —          | —          | —            | —           | 2009-80B   | 2009-80B   | 2011-80B   | 2012-80B   |
| 8        | SPRING                   | 2006-33   | 2006-33    | 2006-33    | 2007-33      | 2008-33     | 2009-33    | 2010-33    | 2011-33    | 2012-33    |
| 9        | LOWER SPRING DISC        | —         | —          | —          | —            | —           | 2009-80B   | 2009-80B   | 2011-80B   | 2012-80B   |
| 10       | COVER STEM NUT           | 2005-9    | 2005-9     | 2006-9     | 2008-9       | 2008-9      | 2009-9     | 2010-9     | 2011-9     | 2012-9     |
|          | THREAD                   | 7/16-20   | 7/16-20    | 1/2-20     | 5/8-18       | 5/8-18      | 3/4-16     | 7/8-14     | 1-1/8-12   | 1-1/4-12   |
| 11       | STEM WASHER              | 2005-14A  | 2005-14A   | 2008-14B   | 2007-14A     | 2010-14B    | 2009-14A   | 2010-14A   | 2011-14A   | 2012-14A   |
| 12       | DIAPHRAGM DISC           | 2005-80SS | 2005-80SS  | 2006-80SS  | 2007-80      | 2008-80     | 2009-80    | 2010-80    | 2011-80    | 2012-80    |
| 13       | DIAPHRAGM                | 2005-43   | 2005-43    | 2006-43    | 2007-43      | 2008-43     | 2009-43    | 2010-43    | 2011-43    | 2012-43    |
| 14       | UPPER STEM O-RING        | 205N      | 205N       | 206N       | 209N         | 209N        | 211N       | 213N       | 217N       | 219N       |
| 15       | PLUNGER, DISC RETAINER   | 2005-34SS | 2005-34SS  | 2006-34SS  | 2007-34      | 2008-34     | 2009-34    | 2010-34    | 2011-34    | 2012-34    |
| 16       | LOWER STEM O-RING        | 205N      | 205N       | 206N       | 209N         | 209N        | 211N       | 213N       | 217N       | 219N       |
| 17       | SEAL RING DISC           | 2005-12   | 2005-12    | 2006-12    | 2007-12      | 2008-12     | 2009-12    | 2010-12    | 2011-12    | 2012-12    |
| 18       | SEAL RETAINER DISC GUIDE | 2005-14SS | 2005-14SS  | 2006-14SS  | 2007-14SS    | 2008-14SS   | 2009-14SS  | 2010-14SS  | 2011-14SS  | 2012-14SS  |
| 19       | STEM                     | 2005-5    | 2005-5     | 2006-5     | 2007-5       | 2008-5      | 2009-5     | 2010-5     | 2011-5     | 2012-5     |
| 20       | SEAT SCREWS              | —         | —          | —          | —            | —           | —          | —          | 2011-11B   | 2011-11B   |
|          | THREAD                   | —         | —          | —          | —            | —           | —          | —          | 5/16-18    | 5/16-18    |
| 21       | SEAT                     | 2005-18SS | 2005-18SS  | 2006-18SS  | 2007-18SS    | 2008-18SS   | 2009-18SS  | 2010-18SS  | 2011-18SS  | 2012-18SS  |
| 22       | STUD, COVER              | —         | —          | —          | —            | —           | —          | —          | 2011-11A   | 2012-11A   |
|          | THREAD X LENGTH          | —         | —          | —          | —            | —           | —          | —          | 3/4-10X3   | 7/8-9X4    |
| 23       | SEAT O-RING              | 031N      | 031N       | 144N       | 151N         | 238N        | 245N       | 259N       | 268N       | 275N       |
| 24       | BODY, CLASS 300 FLANGE   | —         | 2005-1-300 | 2006-1-300 | 2007-1-300   | 2008-1-300  | 2009-1-300 | 2010-1-300 | 2011-1-300 | 2012-1-300 |
|          | BODY, CLASS 150 FLANGE   | —         | 2005-1     | 2006-1     | 2007-1       | 2008-1      | 2009-1     | 2010-1     | 2011-1     | 2012-1     |
|          | BODY, GROOVED            | —         | 2005-1G    | 2006-1G    | 2007-1G      | 2008-1G     | 2009-1G    | 2010-1G    | 2011-1G    | 2012-1G    |
|          | BODY, THREADED           | 2004-1TH  | 2005-1TH   | 2006-1TH   | 2007-1TH     | 2008-1TH    | —          | —          | —          | —          |
| 25       | BODY PLUG                | 101-7B    | 101-7B     | 101-7B     | 558-7        | 558-7       | 5510-7     | 5510-7     | 2011-7     | 2011-7     |



# AUTOMATIC CONTROL VALVES REPAIR KITS



**Rubber Repair Kit for Zurn Wilkins ZW200 Series Full Port ACV**  
(Contains Diaphragm, Stem O-rings, and Disc)  
RK114-112, 2, 212, 3, 4, 6, 8, 10-ZW200R

| DESCRIPTION       | QTY. | 1 1/4"    | 1 1/2"    | 2"        | 2 1/2"    | 3"        | 4"        | 6"        | 8"        | 10"       |
|-------------------|------|-----------|-----------|-----------|-----------|-----------|-----------|-----------|-----------|-----------|
| SEAL RING         | 1    | 2005-12FP | 2005-12FP | 2006-12FP | 2007-12FP | 2008-12FP | 2009-12FP | 2010-12FP | 2011-12FP | 2012-12FP |
| DIAPHRAGM         | 1    | 2005-43   | 2005-43   | 2006-43   | 2007-43   | 2008-43   | 2009-43   | 2010-43   | 2011-43   | 2012-43   |
| UPPER SPRING DISC | 1    | —         | —         | —         | —         | —         | 2009-80A  | 2010-80A  | 2011-80A  | 2012-80A  |
| LOWER SPRING DISC | 1    | —         | —         | —         | —         | —         | 2009-80B  | 2009-80B  | 2011-80B  | 2012-80B  |
| O-RING            | 2    | 205N      | 205N      | 206N      | 209N      | 209N      | 211N      | 213N      | 217N      | 219N      |

**Complete Repair Kit for Zurn Wilkins ZW200 Series Full Port ACV**  
(Contains Stem Assembly, Spring)  
RK114-112, 2, 212, 3, 4, 6, 8, 10-ZW200C

|                    |   |           |           |           |           |           |           |           |           |           |
|--------------------|---|-----------|-----------|-----------|-----------|-----------|-----------|-----------|-----------|-----------|
| STEM               | 1 | 2005-5    | 2005-5    | 2006-5    | 2007-5    | 2008-5    | 2009-5    | 2010-5    | 2011-5    | 2012-5    |
| STEM NUT           | 1 | 2005-9    | 2005-9    | 2006-9    | 2007-9    | 2008-9    | 2009-9    | 2010-9    | 2011-9    | 2012-9    |
| SEAL RING          | 1 | 2005-12FP | 2005-12FP | 2006-12FP | 2007-12FP | 2008-12FP | 2009-12FP | 2010-12FP | 2011-12FP | 2012-12FP |
| SEAL RETAINER DISC | 1 | 2005-14SS | 2005-14SS | 2006-14SS | 2007-14SS | 2008-14SS | 2009-14SS | 2010-14SS | 2011-14SS | 2012-14SS |
| STEM WASHER        | 1 | 2005-14A  | 2005-14A  | 2008-14B  | 2007-14A  | 2010-14B  | 2009-14A  | 2010-14A  | 2011-14A  | 2012-14A  |
| SPRING             | 1 | 2006-33   | 2006-33   | 2006-33   | 2007-33   | 2008-33   | 2009-33   | 2010-33   | 2011-33   | 2012-33   |
| PLUNGER            | 1 | 2005-34SS | 2005-34SS | 2006-34SS | 2007-34   | 2008-34   | 2009-34   | 2010-34   | 2011-34   | 2012-34   |
| DIAPHRAGM          | 1 | 2005-43   | 2005-43   | 2006-43   | 2007-43   | 2008-43   | 2009-43   | 2010-43   | 2011-43   | 2012-43   |
| DIAPHRAGM DISC     | 1 | 2005-80SS | 2005-80SS | 2006-80SS | 2007-80   | 2008-80   | 2009-80   | 2010-80   | 2011-80   | 2012-80   |
| UPPER SPRING DISC  | 1 | —         | —         | —         | —         | —         | 2009-80A  | 2010-80A  | 2011-80A  | 2012-80A  |
| LOWER SPRING DISC  | 1 | —         | —         | —         | —         | —         | 2009-80B  | 2010-80B  | 2011-80B  | 2012-80B  |
| O-RING             | 2 | 205N      | 205N      | 206N      | 209N      | 209N      | 211N      | 213N      | 217N      | 219N      |

**Seat Repair Kit for Zurn Wilkins ZW200 Series Full Port ACV**  
(Contains Seat, O-rings)  
RK114-112, 2, 212, 3, 4, 6, 8, 10-ZW200SK

|             |   |           |           |           |           |           |           |           |           |           |
|-------------|---|-----------|-----------|-----------|-----------|-----------|-----------|-----------|-----------|-----------|
| SEAT SCREW  | 4 | —         | —         | —         | —         | —         | —         | —         | 2011-11B  | 2011-11B  |
| SEAT        | 1 | 2005-18SS | 2005-18SS | 2006-18SS | 2007-18SS | 2008-18SS | 2009-18SS | 2010-18SS | 2011-18SS | 2012-18SS |
| SEAT O-RING | 1 | 031N      | 031N      | 144N      | 151N      | 238N      | 245N      | 259N      | 268N      | 275N      |

# PILOT KITS



|  | PILOT USED ON   |                       |                        |                    |                    |             |
|--|-----------------|-----------------------|------------------------|--------------------|--------------------|-------------|
|  | MAIN VALVE SIZE | MODEL /OPTION         | ADJUSTMENT RANGE (psi) | PILOT PART NUMBER  | REPAIR KIT         | PAGE NUMBER |
| <b>PILOT VALVE PRESSURE REDUCING</b>           | 1-1/4" - 6"     | ZW209LP               | 5 - 25                 | 38-PV-PRD-25       | RK38-PV-PRD-25     | Page 6      |
|  | 1-1/4" - 6"     | ZW209                 | 15 - 150               | 12-NR3XL / 38-PRXL | RK34-NR3XL         | Page 10/12  |
|  | 1-1/4" - 6"     | ZW209FP               | 50 - 175               | 38-PV-PRD-175      | RK38-PV-PRD-175    | Page 6      |
|  | 1-1/4" - 6"     | ZW209HP               | 30-300                 | 38-PV-PRD-300      | RK38-PV-PRD-300    | Page 6      |
|  | 8" - 10"        | ZW209LP               | 5 - 25                 | 12-PV-PRD-25       | RK12-PV-PRD-25     | Page 8      |
|  | 8" - 10"        | ZW209                 | 15 - 150               | 12-NR3XL / 38-PRXL | RK34-NR3XL         | Page 10/12  |
|  | 8" - 10"        | ZW209FP               | 50 - 175               | 12-PV-PRD-175      | RK12-PV-PRD-175    | Page 8      |
| 8" - 10"                                       | ZW209HP         | 30 - 250              | 12-PV-PRD-250          | RK12-PV-PRD-250    | Page 8             |             |
| <b>LOW FLOW BYPASS</b>                         | 1-1/4" - 3"     | ZW209BP               | 15 - 150               | 12-NR3XL / 38-PRXL | RK34-NR3XL         | Page 10/12  |
|  | 4"              | ZW209BP               | 15 - 150               | 34-NR3XLHRSCDULU   | RK34-NR3XL         | Page 10     |
|  | 1-1/4" - 3"     | ZW209BPHP             | 30 - 250               | 12-PV-PRD-250      | RK12-PV-PRD-250    | Page 8      |
|  | 4"              | ZW209BPHP             | 30 - 250               | 34-PV-PRD-250      | RK12-PV-PRD-250    | Page 8      |
| <b>PILOT VALVE PRESSURE RELIEF/ SUSTAINING</b> | 1-1/4" - 10"    | ZW205LP3              | 5-15                   | 12-PV-RLF-15       | RK12-PV-RLF-15     | Page 14     |
|  | 1-1/4" - 10"    | ZW205LP2,ZW215FP      | 10-35                  | 12-PV-RLF-35       | RK12-PV-RLF-35     | Page 14     |
|  | 1-1/4" - 10"    | ZW205LP               | 30-90                  | 12-PV-RLF-90       | RK12-PV-RLF-90     | Page 14     |
|  | 1-1/4" - 10"    | ZW205 new, ZW205FP    | 50-200                 | 12-PV-RLF-200      | RK12-PV-RLF-200    | Page 14     |
|  | 1-1/4" - 10"    | ZW205HP, ZW205FPHP    | 150-300                | 12-PV-RLF-300      | RK12-PV-RLF-300    | Page 14     |
| <b>PILOT VALVE PRESSURE SHUTDOWN</b>           | 1-1/4" - 10"    | ZW207                 | 50-200                 | 12-PV-RLF-200-I    | RK12-P4000A        | Page 14     |
|  | 1-1/4" - 10"    | ZW207HP               | 150-300                | 12-PV-RLF-300-I    | RK12-P4000AHR      | Page 14     |
| <b>ACCELERATOR PILOT</b>                       | 1-1/4" - 10"    | ZW205E, ZW209E        |                        | 12-PV-ACL-2        | RK12-PV-ACL-2      | Page 16     |
|  | 4" - 10"        | ZW206                 |                        | 12-PV-ACL-3        | RK12-PV-ACL-3      | Page 18     |
|  | 8" - 10"        | ZW204                 |                        | 12-PV-ACL-3        | RK12-PV-ACL-3      | Page 18     |
| <b>ON/OFF FLOAT PILOT</b>                      | ALL             | ZW204                 |                        | PV-FNM             | RK-PV-FNM          | Page 20     |
| <b>SOLENOID VALVE</b>                          | 1-1/4" - 10"    | ZW206, ZW209E, ZW205E |                        | PV-SOL3            | (SEE PAGE 20)      | Page 22     |
| <b>HIGH TEMP VITON RUBBER REPAIR KITS</b>      |                 |                       |                        |                    |                    |             |
| <b>PILOT VALVE PRESSURE REDUCING</b>           | 1-1/4" - 6"     | ZW209VLP              | 5-25                   | 38-PV-PRD-25V      | RK38-PV-PRD-25V    | Page 6      |
|  | 1-1/4" - 6"     | ZW209V                | 20-200                 | 38-PV-PRD-200      | RK38-PV-PRD-200V   | Page 6      |
|  | 1-1/4" - 6"     | ZW209VHP              | 30-300                 | 38-PV-PRD-300V     | RK38-PV-PRD-300V   | Page 6      |
|  | 8" - 10"        | ZW209VLP              | 5 - 25                 | 12-PV-PRD-25V      | RK12-PV-PRD-25V    | Page 8      |
|  | 8" - 10"        | ZW209V                | 20 - 200               | 12-PV-PRD-200V     | RK12-PV-PRD-200V   | Page 8      |
|  | 8" - 10"        | ZW209VHP              | 30 - 250               | 12-PV-PRD-250V     | RK12-PV-PRD-300V   | Page 8      |
| <b>PILOT VALVE PRESSURE RELIEF</b>             | 1-1/4" - 10"    | ZW205VLP3             | 5-25                   | 12-PV-RLF-15V      | RK12-PV-RLF-15V    | Page 14     |
|  | 1-1/4" - 10"    | ZW205VLP2             | 10-35                  | 12-PV-RLF-35V      | RK12-PV-RLF-35V    | Page 14     |
|  | 1-1/4" - 10"    | ZW205VLP              | 30-90                  | 12-PV-RLF-90V      | RK12-PV-RLF-90V    | Page 14     |
|  | 1-1/4" - 10"    | ZW205V                | 50-200                 | 12-PV-RLF-200V     | RK12-PV-RLF-200V   | Page 14     |
|  | 1-1/4" - 10"    | ZW207V                | 50-200                 | 12-PV-RLF-200-IV   | RK12-PV-RLF-200-IV | Page 14     |
|  | 1-1/4" - 10"    | ZW205VHP              | 150-300                | 12-PV-RLF-300V     | RK12-PV-RLF-300V   | Page 14     |

# MODEL 38-PV-PRD, 38-PV-PRDST

## 3/8" PILOT VALVE PRESSURE REDUCING

(See Page 5 for Models used on)



| ITEM NO. | ITEM NUMBER   | DESCRIPTION                             | QUANTITY |
|----------|---------------|---|----------|
| 1        | PV-PRD-3A     | ACV PILOT ADJ BOLT CAP                  | 1        |
| 2        | PV-PRD-11     | ACV PILOT ADJ BOLT                      | 1        |
| 3        | 501B-9SS      | NUT, 3/8-16 ST/STEEL                    | 1        |
| 4        | 3707-11C      | SCREW, 10-32-5/8 SS CAP                 | 8        |
| 5        | PV-RLF-A-1    | PILOT BELL                              | 1        |
| 6        | PV-PRD-80A    | ACV PILOT SPRING DISC                   | 1        |
| 7        | BR2-33SS      | SPRING, 3/4" BR4 SS                     | 1        |
|          | 603-33SS      | ACV PILOT SPRING 15-75 PSI              | 1        |
|          | PV-PRD-33-200 | ACV PILOT SPRING 20-200 PSI             | 1        |
|          | PV-PRD-33-300 | ACV PILOT SPRING 30-300 PSI             | 1        |
| 8        | PV-PRD-9      | ACV PILOT STEM NUT                      | 1        |
| 9        | PV-PRD-14     | ACV PILOT STEM LOCK WASHER              | 1        |
| 10       | PV-PRD-80     | ACV PILOT DIAPHRAGM DISC                | 1        |
| 11       | PV-PRD-43     | ACV PILOT DIAPHRAGM                     | 1        |
|          | PV-PRD-43V    | ACV PILOT DIAPHRAGM, VITON              | 1        |
| 12       | 011N          | O-RING, NSF                             | 1        |
|          | 011V          | O-RING, VITON                           | 1        |
| 13       | PV-PRD-5      | ACV PILOT STEM/YOKE                     | 1        |
| 14       | PV-PRD-1      | ACV PILOT BODY                          | 1        |
| 15       | PV-PRD-18     | ACV PILOT SEAT                          | 1        |
| 16       | PV-PRD-340    | ACV PILOT PLUNGER SEAL RING             | 1        |
|          | PV-PRD-340V   | ACV PILOT PLUNGER SEAL RING, VITON      | 1        |
| 17       | WK-018N       | O-RING, FDA                             | 1        |
|          | 018V          | O-RING, VITON                           | 1        |
| 18       | PV-PRD-3      | ACV PILOT MAIN CAP                      | 1        |
| 19       | TPV-PRD-175   | TAG, PRESSURE REDUCING PILOT 50-175 UL  | 1        |
|          | TPV-PRD-200   | TAG, PRESSURE REDUCING PILOT 20-200 PSI | 1        |
|          | TPV-PRD-300   | TAG, PRESSURE REDUCING PILOT 30-300 PSI | 1        |
|          | TPV-BLANK     | TAG, BLANK PRESSURE RELIEF              | 1        |



# MODEL 12-PV-PRD, 34-PV-PRD 12-PV-PRDST, 34-PV-PRDST

1/2" & 3/4" PILOT VALVE PRESSURE REDUCING  
(See Page 5 for Models used on)



| ITEM NO. | ITEM NUMBER   | DESCRIPTION                             | QUANTITY |
|----------|---------------|---|----------|
| 1        | PV-PRD-3A     | ACV PILOT ADJ BOLT CAP                  | 1        |
| 2        | PV-PRD-11     | ACV PILOT ADJ BOLT                      | 1        |
| 3        | 501B-9SS      | NUT, 3/8-16 ST/STEEL                    | 1        |
| 4        | 3707-11C      | SCREW, 10-32-5/8 SS CAP                 | 8        |
| 5        | PV-RLF-A-1    | PILOT BELL                              | 1        |
| 6        | PV-PRD-80A    | ACV PILOT SPRING DISC                   | 1        |
| 7        | BR2-33SS      | ACV PILOT SPRING 5-25 PSI               | 1        |
|          | PV-PRD-33-200 | ACV PILOT SPRING 20-200 PSI             | 1        |
|          | PV-PRD-33-300 | ACV PILOT SPRING 30-250 PSI             | 1        |
| 8        | PV-PRD-9      | ACV PILOT STEM NUT                      | 1        |
| 9        | PV-PRD-14     | ACV PILOT STEM LOCK WASHER              | 1        |
| 10       | PV-PRD-80     | ACV PILOT DIAPHRAGM DISC                | 1        |
| 11       | PV-PRD-43     | ACV PILOT DIAPHRAGM                     | 1        |
|          | PV-PRD-43V    | ACV DIAPHRAGM PILOT, VITON              | 1        |
| 12       | 011N          | O-RING, NSF                             | 1        |
|          | 011V          | O-RING, VITON                           | 1        |
| 13       | PV-RLF-14     | STEM WASHER                             | 1        |
| 14       | PV-RLF-18     | SEAT                                    | 1        |
| 15       | WK-019N       | O-RING, NSF                             | 1        |
|          | 019V          | O-RING, VITON                           | 1        |
| 16       | PV-ACL1-1     | 1/2" BODY                               | 1        |
|          | PV-ACL2-1     | 3/4" BODY                               | 1        |
| 17       | PV-ACL-5      | STEM 3-WAY                              | 1        |
| 18       | PV-ACL-340    | PLUNGER ASSY.                           | 1        |
|          | PV-ACL-340V   | PLUNGER ASSY. SS VITON                  | 1        |
| 19       | 008N          | O-RING                                  | 1        |
|          | 008V          | O-RING, VITON                           | 1        |
| 20       | PV-ACL-31     | WASHER STEM GUIDE                       | 1        |
| 21       | 3707-11C      | SCREW, 10-32X5/8 SS CAP                 | 1        |
| 22       | 118N          | O-RING                                  | 1        |
|          | 118V          | O-RING, VITON                           | 1        |
| 23       | PV-PRD1-3     | 1/2 PRD MAIN CAP                        | 1        |
| 24       | TPV-PRD-175   | TAG, PRESSURE REDUCING PILOT 175 PSI UL | 1        |
|          | TPV-PRD-250   | TAG, PRESSURE REDUCING PILOT 30-250 PSI | 1        |
|          | TPV-PRD-300   | TAG, PRESSURE REDUCING PILOT 30-300 PSI | 1        |
|          | TPV-BLANK     | TAG, BLANK PRESSURE RELIEF              | 1        |





**MODELS NR3XLHRSCDULU**  
**PRESSURE REDUCING VALVE**  
**1/2" OR 3/4" LOW FLOW BYPASS, MODEL ZW209BP**



| ITEM NO. | ITEM NUMBER  | DESCRIPTION            | QUANTITY |
|----------|--------------|------------------------|----------|
| 1        | NR1-1XL-010F | 1/2" NR3XL BODY NL FIN | 1        |
|          | NR2-1XL-010F | 3/4" NR3XL BODY NL FIN | 1        |
| 2        | BR2-CARTXL   | CARTRIDGE XL           | 1        |
|          | BR2-CARTSS   | CARTRIDGE SS           | 1        |
| 3        | BR2-33SS     | SPRING SS              | 1        |
| 4        | BR2-80ASS    | SPRING DISC SS         | 1        |
| 5        | BR2-80CSS    | FRICTION RING          | 1        |
| 6        | BR2-A1X      | BELL                   | 1        |
| 7        | 606C-12      | WASHER                 | 1        |
| 8        | TNR3XLHR     | TAG, NR3XL, HIGH RANGE | 1        |
| 9        | 501B-9SS     | LOCKNUT SS             | 1        |
| 10       | 602A-11ASS   | BOLT, 3/8-16 ST/STEEL  | 1        |

**REPAIR KITS**

REPAIR KITS NR3XL, MODEL  
 REPAIR KIT, 1/2", 3/4" NR3XL HIGH RANGE SEAL CAGE

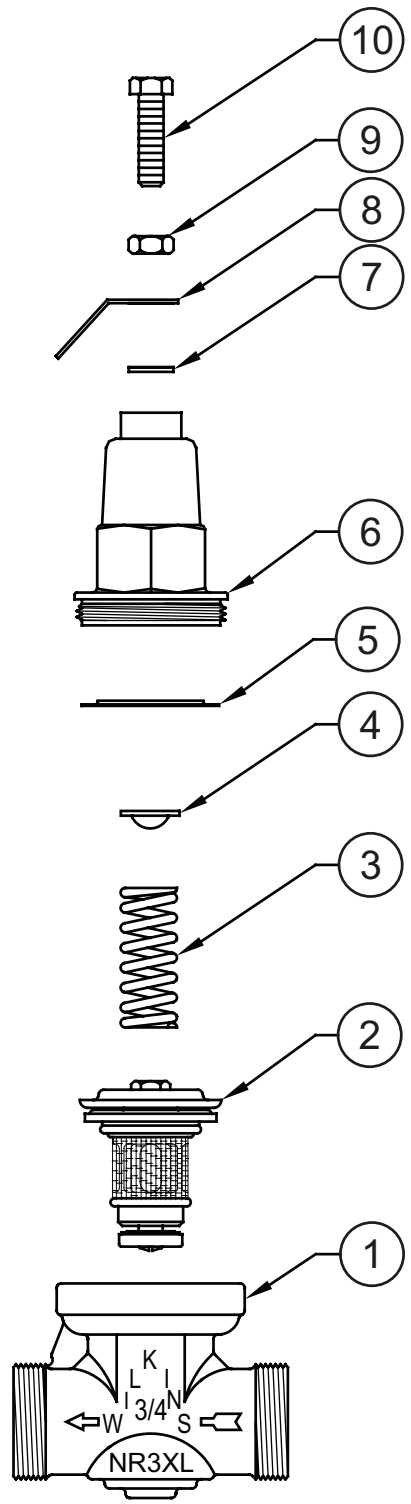
RK12-NR3XLHRSC

RK34-NR3XLHRSC

| DESCRIPTION           | QTY. | 1/2"       | 3/4"       |
|-----------------------|------|------------|------------|
| CART ASSY, 3/4" NR3XL | 1    | BR2-CARTXL | BR2-CARTXL |
| SPRING                | 1    | BR2-33SS   | BR2-33SS   |
| FRICTION RING         | 1    | BR2-80CSS  | BR2-80CSS  |
| DISC SPRING           | 1    | BR2-80ASS  | BR2-80ASS  |

- Item included in specified Model
- Stainless Steel Pilots use the same parts except those noted below

|  | 12-NR3XLHRSCDULU | 34-NR3XLHRSCDULU | STAINLESS STEEL |
|--|------------------|------------------|-----------------|
|  | ●                |                  | ●               |
|  |                  | ●                | ●               |
|  | ●                | ●                | ★               |
|  |                  |                  | ●               |
|  | ●                | ●                | ★               |
|  | ●                | ●                | ★               |
|  | ●                | ●                | ★               |
|  | ●                | ●                | ●               |
|  | ●                | ●                | ●               |
|  | ●                | ●                | ●               |
|  | ●                | ●                | ●               |
|  | ●                | ●                | ●               |
|  | ●                | ●                | ●               |
|  | ●                | ●                | ●               |



NR3XLHRSCDULU (1/2", 3/4")

★ REPAIR KIT ITEMS (ALL ★ ITEMS IN KIT)

# MODELS 38-PRXL 38-PRST 12-PRXL, 12-PRST



1/2" LOW FLOW BY-PASS, MODEL ZW209BP ( 1-1/4" to 3")

3/8" PILOT REGULATOR - ZW209

3/8" PILOT REGULATOR STAINLESS STEEL (DOUBLE UNION)

| ITEM NO. | ITEM NO.     | DESCRIPTION                  | QUANTITY |
|----------|--------------|------------------------------|----------|
| 1        | PR-1XL-010F  | PR BODY 3/8", ZW209XL FIN    | 1        |
|          | PR-1SS-010F  | PR BODY 3/8", ZW209XL SS FIN | 1        |
| 2        | PR-CARTXL    | CARTRIDGE XL                 | 1        |
|          | PR-CARTST    | CARTRIDGE SS                 | 1        |
| 3        | BR2-33SS     | SPRING SS                    | 1        |
| 4        | BR2-80ASS    | SPRING DISC SS               | 1        |
| 5        | BR2-80CSS    | FRICTION RING SS             | 1        |
| 6        | PRA-1-010F   | PR BELL, 3/8" FIN            | 1        |
|          | PRA-1SS-010F | PR BELL, SS 3/8" FIN         | 1        |
| 7        | 606C-12      | WASHER                       | 1        |
| 8        | TPRXL        | TAG, PRXL - ZW209 PILOT      | 1        |
| 9        | 957-9        | NUT                          | 1        |
| 10       | 603A-11ASSHR | BOLT, 3/8-16x2 SS            | 1        |
| 11       | 117N         | UNION GASKET                 | 2        |
| 12       | 38X12-19XL   | TAILPIECE                    | 2        |
|          | 38X12-19SS   | TAILPIECE SS                 | 2        |
|          | 601-19XL     | TAILPIECE                    | 2        |
|          | 601-19SS     | TAILPIECE SS                 | 2        |
| 13       | 601-9-010F   | UNION NUT                    | 2        |
|          | 601-19SS     | UNION NUT SS                 | 2        |

REPAIR KIT PRXL, PRST MODEL  
REPAIR KIT 3/8" and 1/2" PILOT REGULATOR - ZW209

RK38-PRXL

RK38-PRST

| DESCRIPTION                            | QTY. | 3/8"      | 3/8"      |
|--|------|-----------|-----------|
| CART ASSEMBLY, 3/8" & 1/2" PRXL / PRST | 1    | PR-CARTXL | PR-CARTST |
| SPRING                                 | 1    | BR2-33SS  | BR2-33SS  |
| FRICTION RING                          | 1    | BR2-80CSS | BR2-80CSS |
| DISC SPRING                            | 1    | BR2-80ASS | BR2-80ASS |
| UNION GASKET                           | 2    | 117N      | 117N      |



# MODEL 12-PV-RLF, 12-PV-RLFST

## 1/2" PILOT VALVE PRESSURE RELIEF/ SURGE/SUSTAINING/BACK PRESSURE

(See page 5 for Models used on)



| ITEM NO. | ITEM NUMBER    | DESCRIPTION                              | QUANTITY |
|----------|----------------|--|----------|
| 1        | PV-PRD-3A      | ACV PILOT ADJ BOLT CAP                   | 1        |
| 2        | PV-PRD-11      | ACV PILOT ADJ BOLT                       | 1        |
|          | PV-RLF-11      | SCREW, 1/2-13X2.5 SS CUP POINT SET (300) | 1        |
| 3        | 501B-9SS       | NUT, 3/8-16 ST/STEEL                     | 1        |
|          | PV-RLF-9       | NUT, HEX JAM , 1/2-13 BRASS              | 1        |
| 4        | PV-RLF-11A     | SCREW, 10-32X1.5 SS CAP                  | 8        |
| 5        | PV-RLF-A-1     | PILOT BELL                               | 1        |
|          | PV-RLF-A-1-300 | HIGH PRESSURE RELIEF BELL                | 1        |
| 6        | PV-PRD-80A     | ACV PILOT SPRING DISC                    | 2        |
|          | PV-RLF-80      | ACV RELIEF HIGH PRESSURE SPRING DISC     | 1        |
| 7        | 220-33-75      | ACV PILOT SPRING 15 PSI                  | 1        |
|          | BR2-33SS       | ACV PILOT SPRING 35 PSI                  | 1        |
|          | 603-33SS       | ACV PILOT SPRING 90 PSI                  | 1        |
|          | PV-RLF-33-200  | ACV PILOT SPRING 20-200 PSI              | 1        |
|          | PV-RLF-33-300  | ACV PILOT SPRING 30-300 PSI              | 1        |
| 8        | PV-PRD-9       | ACV PILOT STEM NUT                       | 2        |
| 9        | PV-PRD-14      | ACV PILOT STEM LOCK WASHER               | 1        |
| 10       | PV-RLF-14B     | DIAPHRAGM DISC SPACER                    | 1        |
| 11       | PV-PRD-43      | ACV PILOT DIAPHRAGM                      | 1        |
|          | PV-PRD-43V     | ACV PILOT DIAPHRAGM, VITON               | 1        |
| 12       | 011N           | O-RING, NSF                              | 2        |
|          | 011V           | O-RING, VITON                            | 1        |
| 13       | PV-RLF-14      | STEM WASHER                              | 1        |
| 14       | WK-111N        | O-RING                                   | 1        |
|          | 111V           | O-RING, VITON                            | 1        |
| 15       | PV-RLF-2       | BODY SPACER                              | 1        |
| 16       | 131N           | O-RING                                   | 1        |
|          | 131V           | O-RING, VITON                            | 1        |
| 17       | 106N           | O-RING                                   | 1        |
|          | 106V           | O-RING, VITON                            | 1        |
|          | PV-RLF-13      | SENSING HOLE GASKET                      | 1        |
| 18       | PV-RLF-5       | ACV PILOT STEM                           | 1        |
| 19       | PV-RLF-14C     | PLUNGER SEAL WASHER                      | 1        |
| 20       | PV-RLF-340     | PLUNGER WITH MOLDED RUBBER               | 1        |
|          | PV-RLF-340V    | PLUNGER WITH MOLDED RUBBER, VITON        | 1        |
| 21       | PV-RLF-18      | SEAT                                     | 1        |
| 22       | WK-019N        | O-RING                                   | 1        |
|          | 019V           | O-RING, VITON                            | 1        |
| 23       | PV-RLF1-1      | 1/2" BODY                                | 1        |
| 24       | TPV-RLF-200    | TAG, RELIEF PILOT 20-200 PSI UL          | 1        |
|          | TPV-RLF-300    | TAG, PRESSURE RELIEF PILOT 150 - 300 PSI | 1        |
|          | TPV-BLANK      | TAG, BLANK PRESSURE RELIEF               | 1        |



# MODEL 12-PV-ACL-2, 12-PV-ACLST-2

1/2" ACCELERATOR PILOT, 2-WAY

Used on 1-1/4" - 10" ZW205E OR ZW209E

| ITEM NO. | ITEM NUMBER | DESCRIPTION                      | QUANTITY | 12-PV-ACL-2 | STAINLESS STEEL |
|----------|-------------|----------------------------------|----------|-------------|-----------------|
|          |             |                                  |          |             |                 |
| 1        | 3707-11C    | SS CAP SCREW, 10-32-5/8          | 8        | ●           |                 |
| 2        | PV-ACL-A-1  | ACCEL PILOT BELL                 | 1        | ●           | ●               |
| 3        | PV-ACL-33   | ACCEL PILOT SPRING               | 1        | ●           |                 |
| 4        | PV-PRD-9    | ACV PILOT STEM NUT               | 1        | ●           |                 |
| 5        | PV-PRD-14   | ACV PILOT STEM LOCK WASHER       | 1        | ●           |                 |
| 6        | PV-RLF-14   | STEM WASHER                      | 1        | ●           |                 |
| 7        | PV-PRD-43   | ACV PILOT DIAPHRAGM              | 1        | ●           |                 |
| 8        | 011N        | O-RING, NSF                      | 1        | ●           |                 |
| 9        | PV-RLF-340  | PLUNGER WITH MOLDED RUBBER       | 1        | ●           | ●               |
| 10       | PV-ACL-11   | SCREW, 5/16-18X3/4 BUTTON SKT HD | 1        | ●           |                 |
| 11       | PV-RLF-18   | SEAT                             | 1        | ●           | ●               |
| 12       | WK-019N     | O-RING                           | 1        | ●           |                 |
| 13       | PV-RLF1-1   | 1/2" BODY                        | 1        | ●           | ●               |
| 14       | TPV-ACL     | WTAG, ACCELERATOR PILOT          | 1        | ●           |                 |

★  
★  
★  
★

## REPAIR KITS

RK12-PV-ACL-2

REPAIR KIT, 1/2" & 3/4" ACCELERATOR PILOT, 2-WAY

| DESCRIPTION                | QTY. | ITEM       |
|----------------------------|------|------------|
| ACCELERATOR PILOT SPRING   | 1    | PV-ACL-33  |
| ACV PILOT DIAPHRAGM        | 1    | PV-PRD-43  |
| O-RING                     | 1    | 011N       |
| PLUNGER WITH MOLDED RUBBER | 1    | PV-RLF-340 |



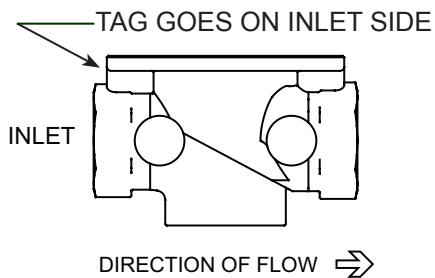
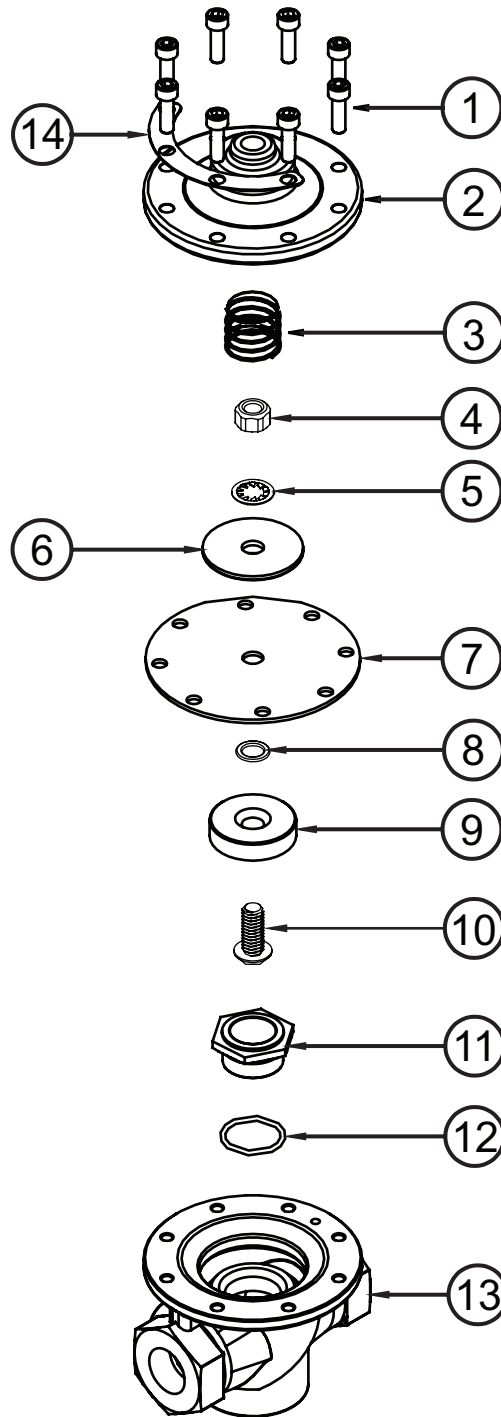
# MODEL 12-PV-ACL-2

## Parts Drawing



- Item included in specified Model

Stainless Steel Pilots use the same parts except those noted below



★ REPAIR KIT ITEMS (ALL ★ ITEMS IN KIT)

# MODEL 12-PV-ACL-3 12-PV-ACLST-3

1/2" ACCELERATOR PILOT, 3-WAY

Used on 4" - 10" ZW206, 8" - 10" ZW204



| ITEM NO. | ITEM NUMBER | DESCRIPTION                | QUANTITY |
|----------|-------------|----------------------------|----------|
| 1        | 3707-11C    | SS CAP SCREW, 10-32-5/8    | 9        |
| 2        | PV-ACL-A-1  | ACCEL PILOT BELL           | 1        |
| 3        | PV-ACL-33   | ACCEL PILOT SPRING         | 1        |
| 4        | PV-PRD-9    | ACV PILOT STEM NUT         | 1        |
| 5        | PV-PRD-14   | ACV PILOT STEM LOCK WASHER | 1        |
| 6        | PV-RLF-14   | STEM WASHER                | 2        |
| 7        | PV-PRD-43   | ACV PILOT DIAPHRAGM        | 1        |
| 8        | 011N        | O-RING, NSF                | 1        |
| 9        | PV-RLF-18   | SEAT                       | 1        |
| 10       | WK-019N     | O-RING                     | 1        |
| 11       | PV-ACL1-1   | 1/2" BODY MACH             | 1        |
| 12       | PV-ACL-5    | STEM                       | 1        |
| 13       | PV-ACL-340  | PLUNGER ASSY.              | 1        |
| 14       | 008N        | O-RING                     | 1        |
| 15       | PV-ACL-31   | WASHER STEM GUIDE          | 1        |
| 16       | 118N        | O-RING                     | 1        |
| 17       | PV-ACL-18   | MAIN CAP/SEAT              | 1        |
| 18       | TPV-ACL     | TAG, ACCELERATOR PILOT     | 1        |

## REPAIR KITS

### RK12-PV-ACL-3

REPAIR KIT, 1/2" & 3/4" ACCELERATOR PILOT, 3-WAY

| DESCRIPTION                | QTY. | ITEM       |
|----------------------------|------|------------|
| ACCELERATOR PILOT SPRING   | 1    | PV-ACL-33  |
| ACV PILOT DIAPHRAGM        | 1    | PV-PRD-43  |
| O-RING                     | 1    | 011N       |
| O-RING                     | 1    | 118N       |
| O-RING                     | 1    | 008N       |
| PLUNGER WITH MOLDED RUBBER | 1    | PV-ACL-340 |



# MODEL PV-FNM

## NON-MODULATING FLOAT PILOT

### Used on all Model ZW204

Extension Kits  
(5 Foot Maximum)

| ITEM NO. | ITEM NUMBER    | DESCRIPTION                                    | QTY. | Extension Kits |           |           |
|----------|----------------|--|------|----------------|-----------|-----------|
|          |                |  |      | PV-FNM-R1      | PV-FNM-R2 | PV-FNM-R3 |
| 1        | 5752-9         | NUT, 1/4-20X7/32 SS                            | 3    |                |           |           |
| 2        | PV-FNM-17CVR   | ACV COVER MOUNT BRACKET, EST/PV-FNM            | 3    |                |           |           |
| 3        | 971-11A        | BOLT, 1/4-20x3/4" HX HD                        | 3    |                |           |           |
| 4        | PV-FNM-9VALVE  | HEX NUT, 10-32 SS                              | 6    |                |           |           |
| 5        | PV-FNM-17BASE  | BASE BRACKET NON-MOD FLOAT PILOT               | 1    |                |           |           |
| 6        | PV-FNM-5CW     | COUNTER WEIGHT STEM NON-MOD FLOAT PILOT        | 1    |                |           |           |
| 7        | WK-7000-11B    | SCREW, 10-32x3/8                               | 2    |                |           |           |
| 8        | PV-FNM-17CW    | COUNTER WEIGHT BRACKET NON MOD FLT PLT         | 1    |                |           |           |
| 9        | PV-FNM-2CW     | VALVE COUNTERWEIGHT NON-MOD FLOAT PILOT        | 1    | 1              | 1         | 1         |
| 10       | PV-FNM-11CW    | 1/4-20X3/4 SQ HD SET SCREW SS, PV-FNM CW       | 1    | 1              | 1         | 1         |
| 11       | PV-FNM-16CW    | COUNTER WEIGHT ROD NON-MOD FLOAT PILOT         | 1    |                |           |           |
| 12       | PV-FNM-11PIV   | SCREW, 10-32X1/4 SS CONE POINT SET             | 1    |                |           |           |
| 13       | 1-7            | PIPE PLUG, 1/8" BRASS                          | 1    |                |           |           |
| 14       | PV-FNM-1       | VALVE BODY NON MOD FLOAT PILOT                 | 1    |                |           |           |
| 15       | 023N           | O-RING   | 1    |                |           |           |
| 16       | PV-FNM-18      | VALVE SEAT NON-MOD FLOAT PILOT                 | 1    |                |           |           |
| 17       | PV-FNM-33      | VALVE STEM SPRING NON-MOD FLOAT PILOT          | 1    |                |           |           |
| 18       | PF-FNM-14      | VALVE STEM WASHER NON-MOD FLOAT PILOT          | 1    |                |           |           |
| 19       | 009N           | O-RING   | 1    |                |           |           |
| 20       | PV-FNM-11FH    | SCREW, 6-32X5/8 SS FH                          | 1    |                |           |           |
| 21       | PV-FNM-3       | VALVE COVER NON-MOD FLOAT PILOT                | 1    |                |           |           |
| 22       | PV-FNM-16RP    | VALVE STEM SHAFT                               | 1    |                |           |           |
| 23       | PV-FNM-5       | VALVE STEM SHAFT                               | 1    |                |           |           |
| 24       | PV-FNM-11VALVE | SCREW, 10-32X1.5 SS PAN HD PHLP                | 4    |                |           |           |
| 25       | PV-FNM-16VALVE | VALVE PIVOT ROD NON-MOD FLOAT PILOT            | 1    |                |           |           |
| 26       | PV-FNM-21SS    | FLOAT ROD SS NON-MOD FLOAT PILOT               | 2    | 1              | 2         | 3         |
| 27       | PV-FNM-11X     | SCREW, 5/16-18X1 SS SKT SET                    | 1    | 1              | 2         | 3         |
| 28       | PV-FNM-FLT-SS  | SS FLOAT 6" NON-MOD FLOAT PILOT                | 1    |                |           |           |
| 29       | PV-FNM-11CLR   | SCREW, 8-32X3/8 SS PAN HD PHLP                 | 2    |                |           |           |
| 30       | PV-FNM-2SS     | SS ROD COLLAR NON-MOD FLOAT PILOT              | 2    |                |           |           |
| 31       | PV-FNM-14END   | 5/16 WASHER SS, FLOAT ROD END STOP PV-FNM      | 1    |                |           |           |
| 32       | PV-FNM-11END   | SCREW, 5/16-18X1/2 SS HEX HD                   | 1    |                |           |           |
| 33       | PV-FNM-14VERT  | 5/16 SCKT HEAD CAP SCREW LOCK WASHER SS, FLOAT | 1    |                |           |           |
| 34       | PV-FNM-11END   | SCREW, 5/16-18X1/2 SS HEX HD                   | 2    |                |           |           |
| 35       | PV-FNM-16CP    | 7/64 X 1-1/4" SS COTTER PIN, PV-FNM PIVOT      | 2    |                |           |           |
| 36       | PV-FNM-17VERT  | VERTICAL ROD BRACKET NON-MOD FLOAT PILOT       | 1    |                |           |           |
| 37       | TPV-FNM        | NON-MODULATING FLOAT TAG                       | 1    |                |           |           |

★

★

★

★

★

★

★

★

★

★

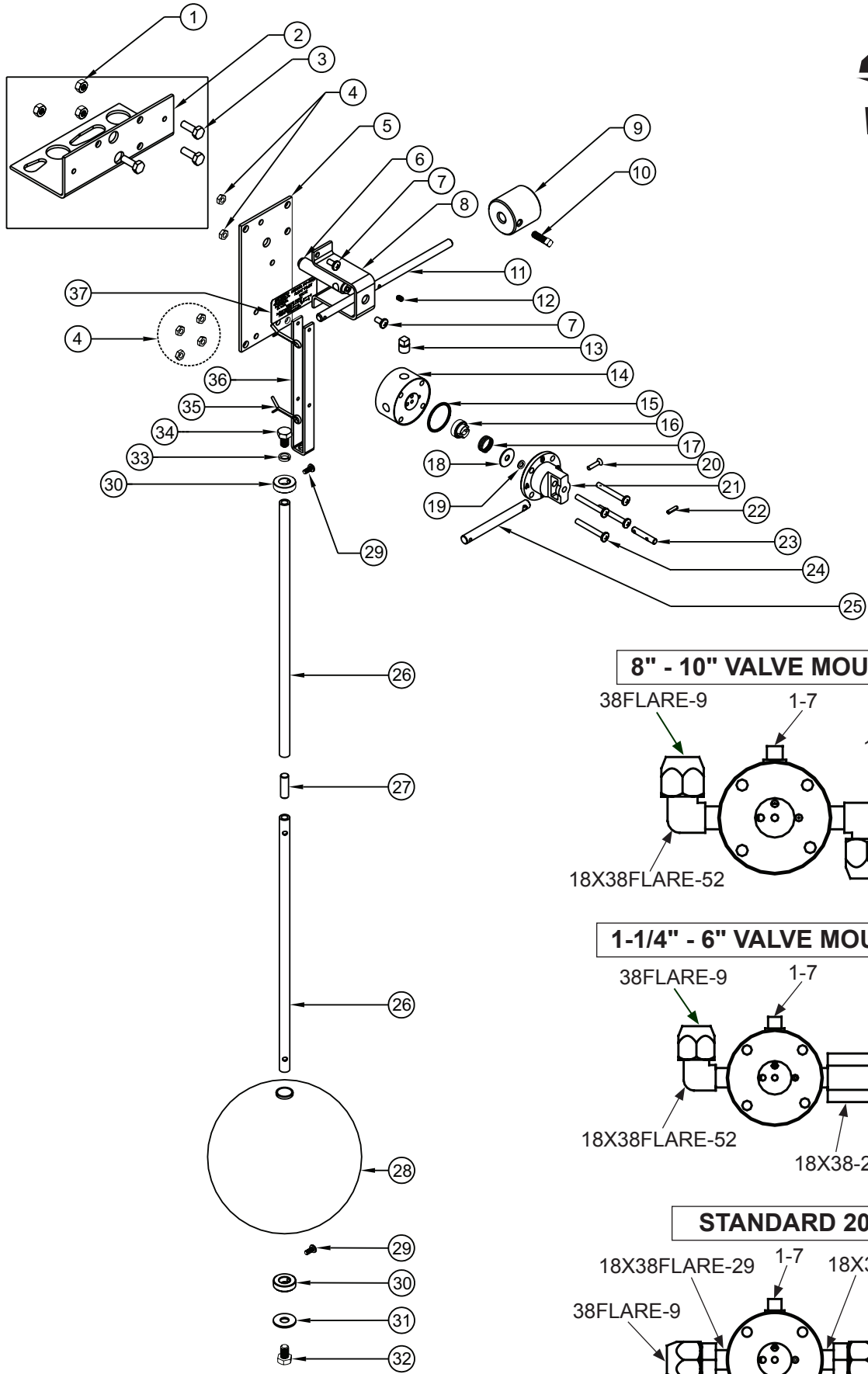
★

★

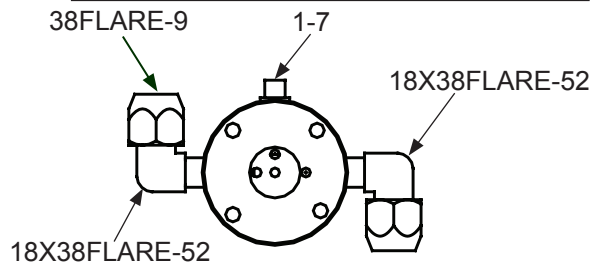
★

★

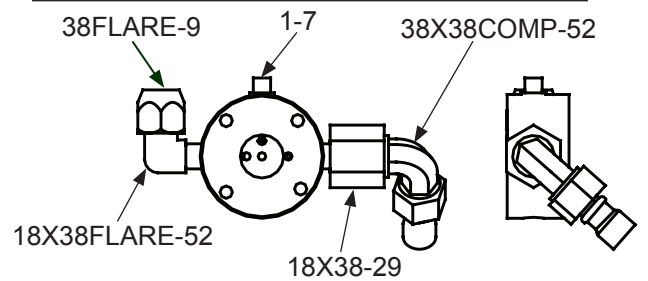
★



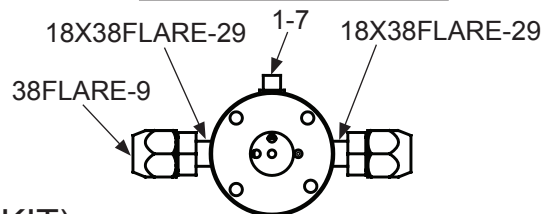
**8" - 10" VALVE MOUNTED 204's**



**1-1/4" - 6" VALVE MOUNTED 204's**



**STANDARD 204**



★ REPAIR KIT ITEMS (ALL ★ ITEMS IN KIT)  
(Repair Kit Part # RK-PV-FNM)

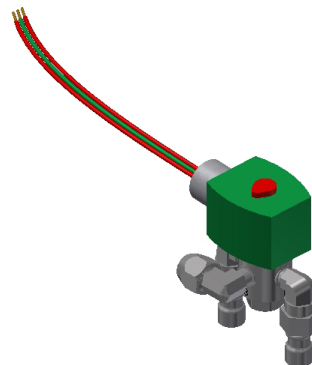
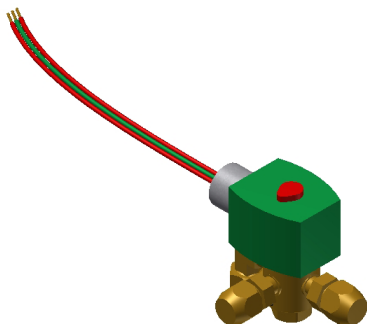
# MODEL PV-SOL3, PVSOL3SS

## SOLENOID, 3-WAY ASCO

Used on Models shown below



| ZURN WILKINS PART #                  | VOLTAGE/FREQ. | USED ON                  | SIZE       | COIL PART NUMBER    | VALVE REPAIR KIT                 |
|--------------------------------------|---------------|--------------------------|------------|---------------------|----------------------------------|
| PV-SOL3-NO<br>PV-SOL3SS-NO           | 120/60        | 206NO,<br>209ENO         | 1-1/4"-10" | RKPV-SOL3-120V-COIL | RKPV-SOL3-NO<br>RKPV-SOL3SS-NO   |
| PV-SOL3-NC<br>PV-SOL3SS-NC           | 120/60        | 206NC,<br>209ENC         | 1-1/4"-10" | RKPV-SOL3-120V-COIL | RKPV-SOL3-NC<br>RKPV-SOL3SS-NC   |
| PV-SOL3-24NO<br>PV-SOL3SS-24NO       | 24/60         | 20624NO,<br>209E24NO     | 1-1/4"-10" | RKPV-SOL3-24V-COIL  | RKPV-SOL3-NO<br>RKPV-SOL3SS-NO   |
| PV-SOL3-24NC<br>PV-SOL3SS-24NC       | 24/60         | 20624NC,<br>209E24NC     | 1-1/4"-10" | RKPV-SOL3-24V-COIL  | RKPV-SOL3-NC<br>RKPV-SOL3SS-NC   |
| PV-SOL3-NOM<br>PV-SOL3SS-NOM         | 120/60        | 206NOMO,<br>209ENOMO     | 1-1/4"-10" | RKPV-SOL3-120V-COIL | RKPV-SOL3-NOM<br>RKPV-SOL3SS-NOM |
| PV-SOL3-NCM<br>PV-SOL3SS-NCM         | 120/60        | 206NCMO,<br>209ENCMO     | 1-1/4"-10" | RKPV-SOL3-120V-COIL | RKPV-SOL3-NCM<br>RKPV-SOL3SS-NCM |
| PV-SOL3-24NOM<br>PV-SOL3SS-24NOM     | 24/60         | 20624NOMO,<br>209E24NOMO | 1-1/4"-10" | RKPV-SOL3-24V-COIL  | RKPV-SOL3-NOM<br>RKPV-SOL3SS-NOM |
| PV-SOL3-24NCM<br>PV-SOL3SS-24NCM     | 24/60         | 20624NCMO,<br>209E24NCMO | 1-1/4"-10" | RKPV-SOL3-24V-COIL  | RKPV-SOL3-NCM<br>RKPV-SOL3SS-NCM |
| PV-SOL3-24NOM-P<br>PV-SOL3SS-24NOM-P | 24/60         | FCIS(NO)                 | 1-1/4"-10" | RKPV-SOL3-24VP-COIL | RKPV-SOL3-NOM<br>RKPV-SOL3SS-NOM |
| PV-SOL3-24NCM-P<br>PV-SOL3SS-24NCM-P | 24/60         | FCISNC                   | 1-1/4"-10" | RKPV-SOL3-24VP-COIL | RKPV-SOL3-NCM<br>RKPV-SOL3SS-NCM |

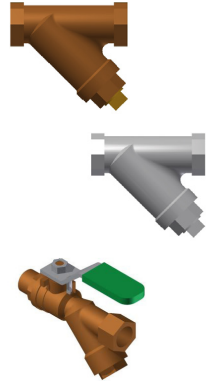


# ACCESSORIES



## STRAINER

| INLET THREAD | OUTLET THREAD | PART NUMBER                    | BOM PARTS  | DESCRIPTION     |
|--------------|---------------|--------------------------------|--|-----------------|
| 3/8" FNPT    | 3/8" FNPT     | 38-SXL<br>(with plug in cover) | 101-41S  | SCREEN (20MESH) |
|              |               |                                | 119N   | CAP O-RING      |
|              |               |                                | 101-7B   | PLUG            |
| 3/8" FNPT    | 3/8" FNPT     | 38-SXL<br>(no plug in cover)   | 101-41S  | SCREEN (20MESH) |
|              |               |                                | 119N   | CAP O-RING      |
| 3/8" FNPT    | 3/8" FNPT     | 38-SST<br>(no plug in cover)   | 101-41S  | SCREEN (20MESH) |
|              |               |                                | 119N   | CAP O-RING      |
| 3/8" MNPT    | 3/8" FNPT     | 38-850MSXL                     | BALL VALVE W/INTEGRAL STRAINER,<br>3/8" MALE LEAD FREE SS HANDLE |                 |



## SPEED CONTROL

| INLET THREAD | OUTLET THREAD | PART NUMBER            | DESCRIPTION                            |
|--------------|---------------|------------------------|--|
| 3/8" MNPT    | 3/8" FNPT     | 38-SC1, 38-SC1ST       | 3/8" 1-WAY, ANGLE BODY/3/8" 1-WAY SS   |
| 1/2" FNPT    | 1/2" FNPT     | 12-SC2, 12-SC2ST       | 1/2" 2-WAY, INLINE BODY, 1/2" 2-WAY SS |
| 1/2" MNPT    | 1/2" FNPT     | 12-SC2AM               | 1/2" 2-WAY, ANGLE BODY                 |
| -            | -             | RK38-SC1R, RK38-SC1STR | RUBBER REPAIR KIT, 3/8" SC1 & SS       |
| -            | -             | RK12-SC1R, RK12-SC1STR | RUBBER REPAIR KIT, 1/2" SC1 & SS       |



## POSITION INDICATOR

| CONNECTION THREAD | PART NUMBER            | MAIN VALVE SIZE | DESCRIPTION                        |
|-------------------|------------------------|-----------------|------------------------------------|
| 1/2" MNPT         | 114-212-ZPI            | 1-1/4" - 2-1/2" | POS. IND. 1-1/4"-2-1/2" ZW200 & SS |
|                   | 114-212-ZPIST          |                 |                                    |
| 1/2" MNPT         | 3-ZPI, 3-ZPIST         | 3"              | POS. IND. 3" ZW200 & SS            |
| 3/4" MNPT         | 4-ZPI, 4-ZPIST         | 4"              | POS. IND. 4" ZW200 & SS            |
| 3/4" MNPT         | 6-ZPI, 6-ZPIST         | 6"              | POS. IND. 6" ZW200 & SS            |
| 1" MNPT           | 8-10-ZPI, 8-10-ZPIST   | 8" - 10"        | POS. IND. 8" - 10" ZW200 & SS      |
| 1" MNPT           | 12-16-ZPI, 12-16-ZPIST | 12" - 16"       | POS. IND. 12" - 16" ZW200 & SS     |

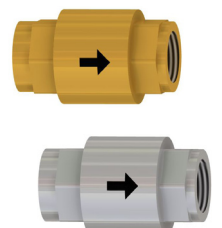


## REPAIR KITS

| REPAIR KIT ZPI & ZPIST MODEL<br>REPAIR KIT, 1-1/4" - 4" POSITION INDICATOR<br>RK114-4-ZPI |      |             | REPAIR KIT ZPI & ZPIST MODEL<br>REPAIR KIT, 6" - 10" POSITION INDICATOR<br>RK6-10-ZPI |      |             |
|---|------|-------------|---|------|-------------|
| ITEM  | QTY. | DESCRIPTION | ITEM  | QTY. | DESCRIPTION |
| 2004ZPI-36  | 1    | TUBE        | 2010ZPI-36  | 1    | TUBE        |
| 751-12  | 2    | GASKET      | 751-12  | 2    | GASKET      |

## CHECK VALVES

| THREAD    | THREAD    | PART NUMBER       | DESCRIPTION                      |
|-----------|-----------|-------------------|----------------------------------|
| 3/8" FNPT | 3/8" FNPT | 38-40XL2, 38-40ST | 3/8" SINGLE CHECK LEAD FREE & SS |
| 1/2" FNPT | 1/2" FNPT | 12-40XL2, 12-40ST | 1/2" SINGLE CHECK LEAD FREE & SS |
| 3/4" FNPT | 3/4" FNPT | 34-40XL2, 34-40ST | 3/4" SINGLE CHECK LEAD FREE & SS |
| 1" FNPT   | 1" FNPT   | 1-40XL2, 1-40ST   | 1" SINGLE CHECK LEAD FREE & SS   |



# ACCESSORIES



## BALL VALVES

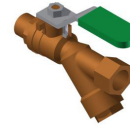
| THREAD    | THREAD    | SIDE TAP  | PART NUMBER            |
|-----------|-----------|-----------|------------------------|
| 3/8" FNPT | 3/8" FNPT |           | 38-850TXL, 38-850SS    |
| 3/8" MNPT | 3/8" FNPT | 1/8" FNPT | 38-850TMXL, 38-850TMSS |
| 3/8" MNPT | 3/8" FNPT |           | 38-850MXLS             |
| 1/2" FNPT | 1/2" FNPT | 1/8" FNPT | 12-850TXL, 12-850TSS   |
| 1/2" FNPT | 1/2" FNPT |           | 12-850XL, 12-850SS     |
| 3/4" FNPT | 3/4" FNPT | 1/8" FNPT | 34-850TXL, 34-850TSS   |
| 3/4" FNPT | 3/4" FNPT |           | 34-850XL, 34-850SS     |



850XL



850XLT



38-850MXLS

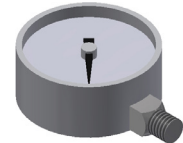
## 3-WAY GAUGE ISOLATION VALVE

| INLET THREAD | TEST PORT THREAD | GAUGE PORT | PART NUMBER |
|--------------|------------------|------------|-------------|
| 1/4" FNPT    | 1/4" FNPT        | 1/4" FNPT  | 14-48UL     |



## PRESSURE GAUGES

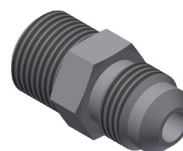
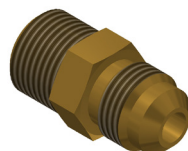
| DIAL SIZE | RANGE   | CONNECTION | PART NUMBER                  | NOTES         |
|-----------|---------|------------|------------------------------|---------------|
| 2"        | 0 - 300 | 1/8" NPT   | 2006-25BP-300                |               |
| 2-1/2"    | 0 - 300 | 1/4" NPT   | 2004-25-300                  |               |
| 2-1/2"    | 0 - 400 | 1/4" NPT   | 2004-25-400                  |               |
| 2-1/2"    | 0 - 300 | 1/8" NPT   | 2006-25LBP-300               | Liquid Filled |
| 2-1/2"    | 0 - 300 | 1/4" NPT   | 2004-25L-300, 2004-25LSS-300 | Liquid Filled |
| 2-1/2"    | 0 - 400 | 1/4" NPT   | 2004-25L-400, 2004-25LSS-400 | Liquid Filled |
| 3-1/2"    | 0 - 300 | 1/4" NPT   | 2005-25UL                    | UL/FM         |



# FITTINGS

## MALE ADAPTERS

| THREAD    | THREAD             | PART NO. BRASS STRAIGHT | PART NO. BRASS ELBOW | PART NO. 316SS STRAIGHT | PART NO. 316SS ELBOW |
|-----------|--------------------|-------------------------|----------------------|-------------------------|----------------------|
| 1/8" MNPT | 1/4" FLARE         | 18X14FLARE-29           | 18X14FLARE-52        | 18X14FLARE-29SS         | 18X14FLARE-52SS      |
| 1/8" MNPT | 3/8" FLARE         | 1/8"X38FLARE-29         | 18X38FLARE-52        | 18X38FLARE-29SS         | 18X38FLARE-52SS      |
| 1/8" MNPT | 3/8" M COMPRESSION |                         | 18X38COMP-52         |                         |                      |
| 1/4" MNPT | 1/4" FLARE         | 14X14FLARE-29           |                      | 14X14FLARE-29SS         |                      |
| 1/4" MNPT | 3/8" M COMPRESSION | 5758A-36                |                      |                         |                      |
| 3/8" MNPT | 1/4" FLARE         | 38X14FLARE-29           |                      |                         |                      |
| 3/8" MNPT | 3/8" M COMPRESSION |                         | 38X38COMP-52         |                         |                      |
| 3/8" MNPT | 3/8" FLARE         | 38X38FLARE-29           | 38X38FLARE-52        | 38X38FLARE-29SS         | 38X38FLARE-52SS      |
| 1/2" MNPT | 1/2" FLARE         | 12X12FLARE-29           | 12X12FLARE-52        | 12X12FLARE-29SS         | 12X12FLARE-52SS      |
| 3/4" MNPT | 3/4" FLARE         |                         | 34X34FLARE-52        |                         | 34X34FLARE-52SS      |



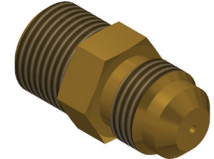
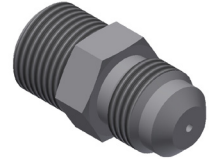


# FITTINGS



## RESTRICTION FITTINGS

| THREAD    | THREAD     | COLOR CODE   | PART NUMBER (BRASS) | PART NUMBER (316 STAINLESS STEEL) |
|-----------|------------|--------------|---------------------|-----------------------------------|
| 3/8" MNPT | 3/8" FLARE | GREEN, 1/6   | 38X38FLARE-29-063   | 38X38FLARE-29SS-063               |
| 3/8" MNPT | 3/8" FLARE | BLUE, 3/32"  | 38X38FLARE-29-094   | 38X38FLARE-29SS-094               |
| 3/8" MNPT | 3/8" FLARE | RED, 1/8"    | 38X38FLARE-29-125   | 38X38FLARE-29SS-125               |
| 3/8" MNPT | 3/8" FLARE | BLACK, 3/16" | 38X38FLARE-29-188   | 38X38FLARE-29SS-188               |
| 3/8" MNPT | 3/8" FLARE | PURPLE, 1/4" | 38X38FLARE-29-250   |                                   |
| 1/2" MNPT | 1/2" FLARE | WHITE, 5/16" | 12X12FLARE-29-313   |                                   |



## TUBE/FLARE NUT ASSEMBLIES

| TUBE SIZE            | FITS               | PART NUMBER (COPPER/BRASS) | PART NUMBER (316 STAINLESS STEEL) |
|----------------------|--------------------|----------------------------|-----------------------------------|
| 1/4" WITH FLARE NUTS | SPECIFY MODEL/TUBE | ACV-14CTUBE-ASSY           | ACV-14SSTUBE-ASSY                 |
| 3/8" WITH FLARE NUTS | SPECIFY MODEL/TUBE | ACV-38CTUBE-ASSY           | ACV-38SSTUBE-ASSY                 |
| 1/2" WITH FLARE NUTS | SPECIFY MODEL/TUBE | ACV-12CTUBE-ASSY           | ACV-12SSTUBE-ASSY                 |
| 3/4" WITH FLARE NUTS | SPECIFY MODEL/TUBE | ACV-34CTUBE-ASSY           | ACV-34SSTUBE-ASSY                 |



## BRASS/BRONZE TEES

| INLET     | RUN OUTLET | SIDE BRANCH | PART NUMBER  |
|-----------|------------|-------------|--------------|
| 1/8" FNPT | 1/8" MNPT  | 1/8" FNPT   | 18X18MX18-53 |
| 3/8" FNPT | 3/8" FNPT  | 3/8" FNPT   | 38X38X38-53  |
| 3/8" FNPT | 3/8" FNPT  | 3/8" MNPT   | 38X38X38M-53 |
| 1/2" FNPT | 1/2" FNPT  | 1/2" FNPT   | 12X12X12-53  |



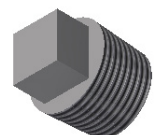
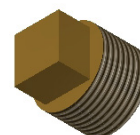
## BRASS/BRONZE ELBOWS

| THREAD    | THREAD    | PART NUMBER | PART NUMBER (STAINLESS STEEL) |
|-----------|-----------|-------------|-------------------------------|
| 1/4" FNPT | 1/4" MNPT | 14-52XLB    | 14X14-52SESS                  |
| 3/8" FNPT | 3/8" FNPT | 38-52B      | 38X38-52SS                    |
| 3/8" MNPT | 3/8" FNPT | 38X38-52SE  | 38X38-52SESS                  |
| 1/2" FNPT | 1/2" FNPT | 12X12-52B   | 12X12-52SS                    |
| 1/2" MNPT | 1/2" FNPT | 557-52XLC   | 12X12-52SESS                  |
| 3/4" MNPT | 3/4" FNPT | 557-52B     | 34X34-52SESS                  |
| 3/4" FNPT | 3/4" FNPT | 557-52      | 34X34-52SS                    |



## BRASS SQUARE HEAD PLUGS

| THREAD    | PART NUMBER | PART NUMBER (STAINLESS STEEL) |
|-----------|-------------|-------------------------------|
| 1/8" MNPT | 1-7         | 1-7SS                         |
| 1/4" MNPT | 14-7, 2-7   | 2-7SS                         |
| 3/8" MNPT | 101-7B      | 101-7SS                       |



# FITTINGS



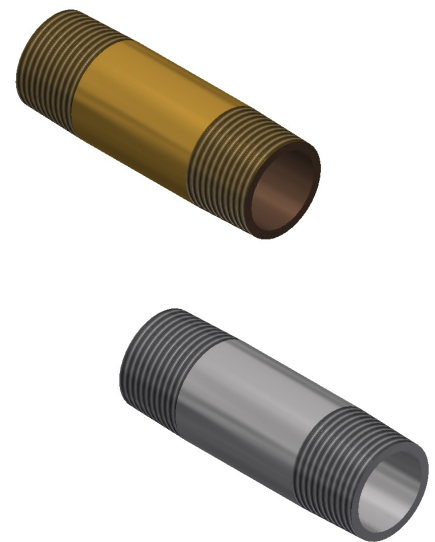
## BRASS/BRONZE BUSHINGS/ADAPTERS

| THREAD      | THREAD      | PART NUMBER             | PART NUMBER (STAINLESS STEEL) |
|-------------|-------------|-------------------------|-------------------------------|
| 1/8" MNPT   | 1/4" FNPT   | 18X14-4A                | 18X14-4ASS                    |
| 3/8" MNPT   | 1/4" FNPT   | 38X14-4F (face bushing) | 38X14-4SS                     |
| 3/8" MNPT   | 3/8" FNPT   | 38X38-4L (long)         | 38X38-4LSS                    |
| 3/8" MNPT   | 1/2" FNPT   | 38X12-4A                | 38X12-4ASS                    |
| 1/2" MNPT   | 3/8" FNPT   | 12X38-4                 | 12X38-4SS                     |
| 1/2" MNPT   | 3/8" FNPT   | 12X38-4L (long)         | 12X38-4LSS                    |
| 1/2" MNPT   | 3/8" FNPT   | 12X38-21B               | 12X38-21SS                    |
| 3/4" MNPT   | 3/8" FNPT   | 34X38-4                 | 34X38-4SS                     |
| 3/4" MNPT   | 3/8" FNPT   | 34X38-4L (long)         | 34X38-4LSS                    |
| 1" MNPT     | 3/8" FNPT   | 1X38-4                  | 1X38-4SS                      |
| 1" MNPT     | 3/8" FNPT   | 1X38-4L                 | 1X38-4LSS                     |
| 1" MNPT     | 1/2" FNPT   | 1X12-4                  | 1X12-4SS                      |
| 1" MNPT     | 3/4" FNPT   | 1X34-4                  | 1X34-4SS                      |
| 3/4" MNPT   | 1/2" FNPT   | 721A-21XL               | -                             |
| 1-1/2" MNPT | 1-1/4" FNPT | 724A-21                 | -                             |



## NIPPLES

| THREAD    | THREAD | PART NUMBER BRASS | PART NUMBER (STAINLESS STEEL) |
|-----------|--------|-------------------|-------------------------------|
| 1/4" MNPT | CLOSE  | 14XCL-21B         | 14XCL-21SS                    |
| 3/8" MNPT | CLOSE  | 38XCL-21B         | 38XCL-21SS                    |
| 3/8" MNPT | 2"     | 38X2-21B          | 38X2-21SS                     |
| 3/8" MNPT | 2 1/2" | 38X2.5-21B        | 38X2.5-21SS                   |
| 3/8" MNPT | 3"     | 38X3-21B          | 38X3-21SS                     |
| 3/8" MNPT | 3 1/2" | 38X3.5-21B        | 38X3.5-21SS                   |
| 3/8" MNPT | 4"     | 38X4-21B          | 38X4-21SS                     |
| 3/8" MNPT | 4 1/2" | 38X4.5-21B        | 38X4.5-21SS                   |
| 3/8" MNPT | 5"     | 38X5-21B          | 38X5-21SS                     |
| 3/8" MNPT | 5 1/2" | 38X5.5-21B        | 38X5.5-21SS                   |
| 3/8" MNPT | 6"     | 38X6-21B          | 38X6-21SS                     |
| 3/8" MNPT | 7"     | 38X7-21B          | 38X7-21SS                     |
| 3/8" MNPT | 8"     | 38X8-21B          | 38X8-21SS                     |
| 3/8" MNPT | 10"    | 38X10-21B         | 38X10-21SS                    |
| 1/2" MNPT | CLOSE  | 101-21B           | 101-21SS                      |
| 1/2" MNPT | 3"     | 12X3-21B          | 12X3-21SS                     |
| 1/2" MNPT | 3 1/2" | 558-21B           | -                             |
| 1/2" MNPT | 4"     | 12X4-21B          | 12X4-21SS                     |
| 3/4" MNPT | CLOSE  | 102-21B           | 102-21SS                      |
| 3/4" MNPT | 2"     | 34X2-21B          | 34X2-21SS                     |
| 3/4" MNPT | 4"     | 5510-21B          | -                             |



## STAINLESS STEEL BRAIDED HOSES

| CONNECTIONS          | LENGTH | PART NUMBER |
|----------------------|--------|-------------|
| 3/8" FXF COMPRESSION | 5"     | 3707-36     |
| 3/8" FXF COMPRESSION | 6"     | 3709-36     |
| 3/8" FXF COMPRESSION | 9"     | 3710-36     |
| 3/8" FXF COMPRESSION | 12"    | 4710-36     |



# NOTES



## Other quality products...

**Backflow Preventers** - ZURN WILKINS offers a complete selection of backflow preventers for residential, industrial, irrigation and fire protection applications.

Features include:

- Low head loss
- In-line serviceability
- Compact design
- Unitized components

### Also...

Zurn Wilkins has one of the most comprehensive varieties of related products that include:

- Automatic control valves
- Temperature and/or pressure relief valves
- Expansion tanks
- Dielectric unions
- Hydronic products
- Fire protection valves
- Irrigation valves
- Water hammer arresters
- "Y" strainers

## SERVICE CENTERS

### West

263 East Gardena Blvd.  
Gardena, CA 90247  
Phone: 310•719•1926  
Fax: 310•719•7062

2875 South Elm Ave. Ste. 108  
Fresno, CA 93706  
Phone: 559•485•1400  
Fax: 559•485•5345

### Southwest

12847 Valley Branch Lane  
Dallas, TX 75234  
Phone: 972•241•4898  
Fax: 972•241•0671

### Northeast

37 Runway Rd.  
Levittown, PA 19057  
Phone: 215•604•3090  
Fax: 215•604•0126

### Southeast

6485 Crescent Dr. NW Ste. A-2  
Norcross, GA 30071  
Phone: 770•448•8990  
Fax: 770•448•0228

### Great Lakes

1900 W. Hively Ave,  
Elkart, IN. 46517  
Phone: 574•294•7541  
Fax: 574•293•1782

### Canada

3544 Nashua Drive  
Mississauga, Ontario L4V 1L2  
Phone: 905•405•8272  
Fax: 905•405•1292



Customer Service Representatives are available  
Monday through Friday 5:30 am to 5:00 pm PST.  
Call 1-855-663-9876 or 805-226-6297  
1.855.ONE.ZURN or visit us online at [www.zurn.com](http://www.zurn.com)