

Trench Drain Systems

TD0122 Customer Guide



ZURN.COM US 1.855.ONE.ZURN CANADA 1.877.892.5216

Effective January 1, 2022
Replaces All Previous Price Lists

TRENCH DRAIN SYSTEMS

PERMA-TRENCH®

Z886 6" WIDE TRENCH DRAIN SYSTEM	2
Z882 12" WIDE TRENCH DRAIN SYSTEM	4
Z874-12 TRENCH DRAIN SYSTEM	5
Z874-18 TRENCH DRAIN SYSTEM	6
Z874-21 TRENCH DRAIN SYSTEM	7
Z874-U-XX-LDRA LIGHT-DUTY UTILITY TRENCH WITH ALUMINUM FRAME, CLAMP, AND SOLID COVER	8
Z874-U-XX-LDRS LIGHT-DUTY UTILITY TRENCH WITH ALUMINUM FRAME AND CLAMP WITH SOLID STEEL COVER	8
Z874-U-XX-HD HEAVY-DUTY UTILITY TRENCH WITH STEEL FRAME AND DUCTILE IRON SOLID COVER	8
Z880 2-1/2" WIDE TRENCH DRAIN SYSTEM	9
Z884 4-3/4" WIDE SHALLOW DRAIN SYSTEM	9
Z883 6" WIDE SHALLOW TRENCH DRAIN SYSTEM	10
Z887 CATCH BASIN	11

STAINLESS / SANI-FLO®

ZS880 STAINLESS STEEL LINEAR SHOWER DRAIN	12
ZS890 6" STAINLESS STEEL TRENCH DRAIN SYSTEM	13
ZS895 12" STAINLESS STEEL TRENCH DRAIN SYSTEM	14
Z898 18" WIDE TRENCH DRAIN SYSTEM	15
Z894 24" WIDE TRENCH DRAIN SYSTEM	16
Z899-100 ELEVATOR DRAIN	17
Z891 STAINLESS STEEL SLOTTED DRAINAGE SYSTEM	17
Z893 STAINLESS STEEL FLOOR RECEPTOR WITH BAR GRATE	18
Z897 STAINLESS STEEL CATCH BASIN	19

SLOT DRAIN / HI-CAP®

Z888-4 SLOTTED DRAINAGE SYSTEM	20
Z888-6 SLOTTED DRAINAGE SYSTEM	20
Z888-12,-18 HIGH CAPACITY TRENCH DRAIN SYSTEM SLOTTED DRAINAGE SYSTEM	21
Z889-12,-18 HIGH CAPACITY CLEANOUT PORT	21

ALUMINUM TRENCH

ZA880-156 EXTRUDED ALUMINUM TRENCH DRAIN SYSTEM	22
ZA880-300A EXTRUDED ALUMINUM TRENCH DRAIN SYSTEM (PRICING WITHOUT GRATE)	22
ZA880-300B EXTRUDED ALUMINUM TRENCH DRAIN SYSTEM (PRICING WITHOUT GRATE)	22
ZA880-340 EXTRUDED ALUMINUM TRENCH DRAIN SYSTEM (PRICING WITHOUT GRATE)	22

FIBERGLASS

ZF806 6" WIDE TRENCH DRAIN SYSTEM	23
ZF812 12" WIDE TRENCH DRAIN SYSTEM	25
ZF817 CATCH BASIN	26

FRAME AND GRATE SYSTEMS

Z706 6" WIDE FRAME AND GRATE SYSTEM	27
Z712 12" WIDE FRAME AND GRATE SYSTEM	28
Z717 17" WIDE FRAME AND GRATE SYSTEM	29
Z723 23" WIDE FRAME AND GRATE SYSTEM	29
Z726 26" WIDE FRAME AND GRATE SYSTEM	30

OIL SEPARATORS

Z885 POLYETHYLENE OIL SEPARATOR	31
--	-----------

TECHNICAL INFORMATION

GENERAL TERMS AND CONDITIONS	32
------------------------------	-----------



Denotes products made in the U.S.A.

PLEASE NOTE

All products require a minimum of 4" new concrete encasement.

POA = Price On Availability

‡ Indicates grate will be shipped unpainted. For an additional charge, Zurn will paint the grates. Please contact your customer service representative for pricing.

Z886 6" WIDE TRENCH DRAIN SYSTEM



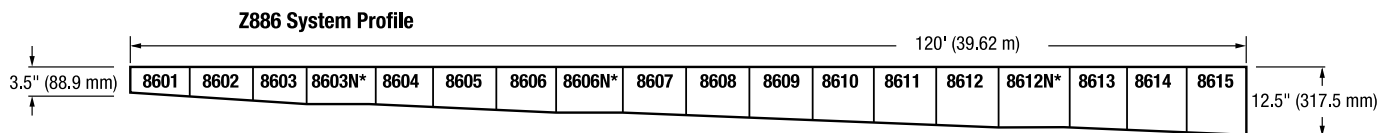
Standard Length: 80" (6.67')
Standard Grate Included: DGC

ENGINEERING SPECIFICATION

Channels shall be 80" long, 6" wide, and have a 4" wide throat. Modular channel sections shall be made of High Density Polyethylene (HDPE), have interlocking ends, and radiused bottom. Channel shall be provided either flat (neutral) or with a .75% built-in slope. Channels shall be available with inverts ranging from 3.5" to 12.50". Channels shall have clips molded into the sides of the channel to accommodate vertical rebar for positioning and anchoring purposes. Choices of class A thru F grates shall be available with H-20 and/or FAA load ratings and/or ADA compliance with mechanical lockdown devices. End caps and catch basins shall be available to complement the channels and grates. End outlets, bottom outlets, and side outlets shall be available in 2", 3", 4", and 6" diameters. Trench drain shall be Flo-Thru model Z886.

Trench Number	Shallow Invert		Deep Invert		Flow Rate		
	In.	mm	In.	mm	CFS	GPM	LPS
8601	3.50	89	4.10	104	0.207	93	6
8602	4.10	104	4.70	119	0.272	122	8
8603	4.70	119	5.30	135	0.339	152	10
8603N	5.30	135	5.30	135	-	-	-
8604	5.30	135	5.90	150	0.408	183	12
8605	5.90	150	6.50	165	0.477	214	14
8606	6.50	165	7.10	180	0.546	245	16
8606N	7.10	180	7.10	180	-	-	-
8607	7.10	180	7.70	196	0.615	276	17
8608	7.70	196	8.30	211	0.686	308	19
8609	8.30	211	8.90	226	0.755	339	21
8610	8.90	226	9.50	241	0.827	371	23
8611	9.50	241	10.1	257	0.898	403	26
8612	10.10	257	10.70	272	0.969	435	28
8612N	10.70	272	10.70	272	-	-	-
8613	10.70	272	11.30	287	1.041	467	30
8614	11.30	287	11.90	302	1.11	498	32
8615	11.90	302	12.50	318	1.181	530	34

PREFIX	DESCRIPTION	NO. OF GRATES ANCHOR STRAPS	TRENCH NUMBERS	PER FOOT
Z*	80" High Density Polyethylene (HDPE) Channel with Ductile Iron Grate - Class C with Grate Lockdown Hardware*	4	8601 to 8615	133.00
OUTLET ADAPTERS				ADD/EACH
-E1	Closed End Cap			38.00
-E2	2" No-Hub End Outlet			38.00
-E3	3" No-Hub End Outlet			38.00
-E4	4" No-Hub End Outlet			38.00
-E6	6" No-Hub End Outlet			38.00
-U2	2" No-Hub Bottom Outlet			38.00
-U3	3" No-Hub Bottom Outlet			38.00
-U4	4" No-Hub Bottom Outlet			38.00
-U6	6" No-Hub Bottom Outlet			38.00
STANDARD GRATE OPTIONS				ADD/FOOT
-BDC	Black Acid Resistant Epoxy Coated Ductile Grate-Class C			54.00
-BDE	Black Acid Resistant Epoxy Coated Ductile Grate-Class E			75.00
-BG	Galvanized Ductile Iron Bar Grate - Class C			36.00
-DBG	Ductile Iron Cast Bar Grate - Class C			21.00
-DC	Ductile Iron Solid Cover - Class C			25.00
-DGC	Ductile Iron Slotted Grate - Class C			*
-DGE	Ductile Iron Slotted Grate - Class E			17.00
‡ -FGF	Ductile Iron Frame and Slotted Grate - Class F			79.00
-GDC	Galvanized Ductile Grate - Class C			21.00
-GDE	Galvanized Ductile Grate - Class E			29.00
-GFG	Galvanized Ductile Frame and Slotted Grate - Class F			96.00
-GG	Fiberglass Grate - Class A			79.00
-GHPD	Galvanized Heel-Proof Ductile Grate - Class B			69.00
-GHPDE	Galvanized Heel-Proof Ductile Grate - Class E			90.00
-HPD	Heel-Proof Longitudinal Ductile Grate - Class B			21.00
-HPDE	Heel-Proof Longitudinal Ductile Grate - Class E			51.00
-HPP	Heel-Proof Polyethylene Grate - Class A			12.00
-LD	Longitudinal Ductile ADA Grate - Class B			16.00
-P6-DEBRIS-COVER	Debris Cover			N/C
-RFGC	Reinforced Galvanized Steel Slotted Grate - Class C			49.00
-RFSC	Reinforced Stainless Steel Slotted Grate - Class C			126.00
-RPGC	Reinforced Galvanized Perforated Grate - Class C			49.00
-RPGRC	Reinforced Galvanized Perforated Reverse Punch Anti-Slip - Class C			49.00
-RPSC	Reinforced Stainless Steel Perforated ADA Grate - Class C			126.00
-RPSRC	Reinforced Stainless Steel Perforated Reverse Punch Anti-Slip Grate - Class C			126.00



For additional product information, please visit www.zurn.com.

*Regularly furnished unless otherwise specified.

‡Indicates grate will be shipped unpainted. For an additional charge, Zurn will paint the grates. Please contact your customer service representative for pricing.

Z886 6" WIDE TRENCH DRAIN SYSTEM

DECORATIVE GRATE OPTIONS		ADD/FOOT
-BCD	Bronze Circular Decorative Grate - Class A	397.00
-BDD	Bronze Diagonal Decorative Grate - Class A	397.00
-DCD	Ductile Circular Decorative Grate - Class C	25.00
-DDD	Ductile Diagonal Decorative Grate - Class A	25.00
-DOG	Ductile Decorative Grate - Class B	25.00
-DTW	Ductile Iron Tidal Wave Grate - Class C	34.00
-HPB	Heel-Proof Bronze Slotted Grate - Class A	397.00
-HPS	Heel-Proof Stainless Steel Slotted Grate - Class A	397.00
-SBG	Stainless Steel Bar Grate - Class E	397.00
-SCD	Stainless Steel Circular Decorative Grate - Class B	397.00
-SDD	Stainless Steel Diagonal Decorative Grate - Class B	397.00
-SMG	Stainless Steel Mesh Grate - Class B	158.00
-SOG	Stainless Steel Decorative Grate - Class B	397.00
-SWG-B	Stainless Steel Wire Grate - Class B	401.00
MISCELLANEOUS OPTIONS		ADD/FOOT
-AVB	Aluminum Veneer Bronze Anodized Frame	21.00
-CBF	Black Acid Resistant Coated Top Frame	75.00
-HDF	Extra-Heavy-Duty Frame Assembly with Anchor Studs and Grate Lockdown Hardware	49.00
-HDG	Galvanized Extra-Heavy-Duty Frame Assembly with Anchor Studs and Grate Lockdown Hardware	93.00
-HDS	Stainless Steel Extra-Heavy-Duty Frame Assembly with Anchor Studs and Grate Lockdown Hardware	146.00
-SVF	Type 304 Stainless Steel Top Veneer Frame	41.00
-SW	9" High Sidewall Extension (Per Pair)	62.00
-VP	Vandal-Proof Stainless Steel Center Lockdown	13.00
		ADD/EACH
-JC	Joint Connector	77.00



MADE IN THE U.S.A. (HIGHLIGHTED IN GRAY)

STANDARD GRATE OPTIONS		ADD/FOOT
-AWG	Aluminum Wire Grate - Class A	580.00
-BDE-USA	Black Acid Resistant Epoxy Coated Ductile Grate - Class E	93.00
-DCE-USA	Ductile Solid Cover USA - Class E	75.00
-DGC-USA	Ductile Iron Slotted Grate - Class C	23.00
-DGE-USA	Ductile Iron Slotted Grate - Class E	35.00
‡ -FGF-USA	Ductile Iron Frame and Slotted Grate - Class F	90.00
-FS	Fabricated Stainless Steel Slotted Grate - Class A	38.00
-GDC-USA	Galvanized Ductile Grate - Class C	42.00
-GDE-USA	Galvanized Ductile Grate - Class E	48.00
-GFG-USA	Galvanized Ductile Frame and Slotted Grate - Class F	111.00
-GHPDE-USA	Galvanized Heel-Proof Ductile ADA Grate - Class E	117.00
‡ -HDD	Domestic Ductile Highway Grate - H20/H25 Non-Removable - Class C	42.00
-HPDE-USA	Heel-Proof Longitudinal Ductile Grate - Class E	77.00
‡ -HR	Ductile Iron Removable Grate/Frame System - H20/H25 - Class C	59.00
-PPC	Plastic Perforated Grate - Class C	93.00
-PS	Perforated Stainless Steel ADA Grate - Class A	38.00
-PSR	Stainless Steel Perforated Reverse Punch Anti-Slip ADA Grate - Class A	38.00
DEDUCT/FOOT		
-FG	Fabricated Galvanized Steel Slotted Grate - Class A	-16.00
-PG	Perforated Galvanized Steel ADA Grate - Class A	-16.00
-PGR	Galvanized Perforated Reverse Punch Anti-Slip ADA Grate - Class A	-16.00
DECORATIVE GRATE OPTIONS		ADD/FOOT
-BZ	Bronze Decorative Grate - Class A	397.00
-GMG	Galvanized Steel Mesh Grate - Class B	52.00
-NBZ-USA	Nickel Bronze Decorative Grate - Class A	535.00
-PDE-USA	Ductile Iron Perforated ADA Grate - Class E	212.00
-PVS	Paver Slot Grate - Class B (Specify Center or Offset)	163.00
-PVSG	Galvanized Paver Slot Grate - Class B (Specify Center or Offset)	258.00
-PVSS	Stainless Steel Paver Slot Grate - Class B (Specify Center or Offset)	357.00
-PVSD	Double Paver Slot - Class B	POA
-PVSGD	Galvanized Double Paver Slot - Class B	POA
-PVSSD	Stainless Steel Double Paver Slot Grate - Class B (Specify Center or Offset)	POA
MISCELLANEOUS OPTIONS		ADD/FOOT
-HDF-USA	Extra-Heavy-Duty Frame Assembly with Anchor Studs and Grate Lockdown Hardware	66.00
-HDG-USA	Galvanized Extra-Heavy-Duty Assembly with Anchor Studs and Grate Lockdown Hardware	104.00
-NOZZLE	Z886 Flushing Nozzle	359.00
		ADD/EACH
-DB	Bottom Dome Strainer	77.00
-DBG	Galvanized Dome Strainer	114.00
-DBS	Stainless Steel Dome Strainer	152.00
SERVICE CHARGES		ADD/EACH
Fabrication	-45°; 90°; Tee; Side Outlet Fabs	353.00
	-Cross Fabs	701.00
Cutting		93.00
Radiused Channel		POA

*Regularly furnished unless otherwise specified.

‡Indicates grate will be shipped unpainted. For an additional charge, Zurn will paint the grates. Please contact your customer service representative for pricing.

For additional product information, please visit www.zurn.com.

PERMA-TRENCH®

STAINLESS / SANI-FLO®

SLOT DRAIN / HI-CAP®

ALUMINUM TRENCH

FIBERGLASS

FRAME AND GRATE SYSTEMS

OIL SEPARATORS

Z882 12" WIDE TRENCH DRAIN SYSTEM



Standard Length: 8'
Standard Grate Included: DGC

ENGINEERING SPECIFICATION

Channels shall be 8' long, 12" wide, and have a 9-1/4" wide throat. Modular channel sections shall be made of High Density Polyethylene (HDPE), have interlocking ends, and radiused bottom. Channel shall be provided with no slope (neutral) or with a 1.04% built-in slope. Channels shall be available with inverts ranging from 6.25" to 18.25". Channels shall have clips molded into the sides of the channel to accommodate vertical rebar for positioning and anchoring purposes. Choices of class A thru F grates shall be available with H-20 and/or FAA load ratings and/or ADA compliance with mechanical lockdown devices. A heavy-duty steel frame shall be provided to distribute weight between the grates and the HDPE channel. End caps and catch basins shall be available to complement the channels and grates. End outlets, bottom outlets, and side outlets shall be available in 4", 6", and 8" diameters. Trench drain shall be Flo-Thru model Z882.

Trench Number	Shallow Invert		Deep Invert		Flow Rate		
	In.	mm	In.	mm	CFS	GPM	LPS
8201	6.25	159	7.25	184	1.241	557	35
8202	7.25	184	8.25	210	1.725	774	49
8203	8.25	210	9.25	235	2.226	999	63
8203N	9.25	235	9.25	235	-	-	-
8204	9.25	235	10.25	260	2.745	1232	78
8205	10.25	260	11.25	286	3.271	1468	93
8206	11.25	286	12.25	311	3.808	1709	108
8206N	12.25	311	12.25	311	-	-	-
8207	12.25	311	13.25	337	4.347	1951	123
8208	13.25	337	14.25	362	4.893	2196	139
8209	14.25	362	15.25	387	5.443	2443	155
8209N	15.25	387	15.25	387	-	-	-
8210	15.25	387	16.25	413	5.996	2691	170
8211	16.25	413	17.25	438	6.551	2940	186
8212	17.25	438	18.25	464	7.106	3189	202

PREFIX	DESCRIPTION	NO. OF GRATES ANCHOR STRAPS	TRENCH NUMBERS	PER FOOT
Z*	8' High Density Polyethylene (HDPE) Channel, Heavy-Duty Frame with Anchor Studs, Ductile Iron Grate - Class C with Lockdowns and Anchor Straps	4	8201 to 8212	281.00

OUTLET ADAPTERS	ADD/EACH
-E1	Closed End Cap 77.00
-E4	4" No-Hub End Outlet 77.00
-E6	6" No-Hub End Outlet 77.00
-E8	8" No-Hub End Outlet 77.00
-U4	4" No-Hub Bottom Outlet 77.00
-U6	6" No-Hub Bottom Outlet 77.00
-U8	8" No-Hub Bottom Outlet 77.00

GRATE OPTIONS	ADD/FOOT
-BDC	Black Acid Resistant Epoxy Coated Ductile Grate - Class C 76.00
-BDE	Black Acid Resistant Epoxy Coated Ductile Grate - Class E 93.00
-BDF	Black Acid Resistant Ductile Grate - Class F 150.00
-BG	Galvanized Ductile Iron Bar Grate - Class D 201.00
-DC	Ductile Iron Solid Cover - Class E 75.00
* -DGC	Ductile Iron Slotted Grate - Class C (Four Corner Lockdown) *

GRATE OPTIONS	ADD/FOOT
-DGE	Ductile Iron Slotted Grate - Class E 45.00
-DGF	Ductile Iron Slotted Grate - Class F 102.00
-GDC	Galvanized Ductile Slotted Grate - Class C 76.00
-GDE	Galvanized Ductile Slotted Grate - Class E 93.00
-GDF	Galvanized Ductile Slotted Grate - Class F 150.00
-GG	Fiberglass Grate - Class A 102.00
-GHPD	Galvanized Heel-Proof Ductile Grate - Class B 119.00
-GHPDE	Galvanized Heel-Proof Ductile ADA Grate - Class E 198.00
-HPD	Heel-Proof Ductile Slotted Grate - Class B 54.00
-HPDE	Heel-Proof Ductile ADA Grate - Class E 93.00
-P12-DEBRIS-COVER	Debris Cover N/C
-RFGC	Reinforced Galvanized Steel Slotted Grate - Class C 226.00
-RFSC	Reinforced Stainless Steel Slotted Grate - Class C 439.00
-RPGC	Reinforced Galvanized Perforated ADA Grate - Class C 226.00
-RPGRC	Reinforced Galvanized Perforated Reverse Punch Anti-Slip ADA Grate - Class C 226.00
-RPSC	Reinforced Stainless Steel Perforated Grate - Class C 439.00
-RPSRC	Reinforced Stainless Steel Perforated Reverse Punch Anti-Slip Grate - Class C 439.00
-SBG-E	Stainless Steel Bar Grate - Class E 908.00
-SBG-L	Stainless Steel Bar Grate - Class C 538.00
-SWG-A	Stainless Steel Wire Grate - Class A 596.00

MISCELLANEOUS OPTIONS	ADD/FOOT
-VP	Vandal-Proof Center Lockdown 13.00

	ADD/EACH
-JC	Joint Connector 147.00

MADE IN THE U.S.A. (HIGHLIGHTED IN GRAY)

GRATE OPTIONS	ADD/FOOT
‡ -ADA-USA	Meets Americans with Disabilities Act Requirements - Class C 125.00
-BDE-USA	Black Acid Resistant Epoxy Coated Ductile Grate - Class E 173.00
‡ -DGC-USA	Ductile Iron Slotted Grate - Class C 119.00
‡ -DGE-USA	Ductile Iron Slotted Grate - Class E 138.00
-FG	Fabricated Galvanized Steel Slotted Grate - Class A 25.00
-FS	Fabricated Stainless Steel Slotted Grate - Class A 198.00
-GADA-USA	Galvanized Ductile ADA Slotted Grate - Class C 146.00
-GDC-USA	Galvanized Ductile Slotted Grate - Class C 138.00
-GDE-USA	Galvanized Ductile Slotted Grate - Class E 173.00
-GHPDE-USA	Galvanized Heel-Proof Ductile ADA Grate - Class E 216.00
-HPDE-USA	Heel-Proof Ductile ADA Grate - Class E 156.00
-PG	Galvanized Perforated Steel ADA Grate - Class A 25.00
-PGR	Galvanized Perforated Reverse Punch Anti-Slip ADA - Class A 25.00
-PS	Stainless Steel Perforated ADA Grate - Class A 198.00
-PSR	Stainless Steel Perforated Reverse Punch Anti-Slip ADA - Class A 198.00
-SSCD	Reinforced Stainless Steel Solid Cover - Class B 567.00

MISCELLANEOUS OPTIONS	ADD/FOOT
-CBF	Black Acid Resistant Coated Top Frame 54.00
-HDF-USA	Extra Heavy Duty Frame Assembly 96.00
-HDG	Galvanized Frame Assembly 54.00
-SF/HDS	Type 304 Heavy Duty Stainless Steel Top Frame 276.00
-SW	Sidewall Extension - 11" High (Per Pair) 83.00

	ADD/EACH
-DB	Bottom Dome Strainer 102.00
-DBG	Galvanized Dome Strainer 114.00
-DBS	Stainless Steel Dome Strainer 152.00

SERVICE CHARGES	ADD/EACH
Fabrication	- 45°; 90°; Tee; Side Outlet Fabs 704.00
	-Cross Fabs 1,400.00
Cutting	183.00

For additional product information, please visit www.zurn.com.

*Regularly furnished unless otherwise specified.

‡Indicates grate will be shipped unpainted. For an additional charge, Zurn will paint the grates. Please contact your customer service representative for pricing.

PERMA-TRENCH®

STAINLESS / SANI-FLO®

SLOT DRAIN / HI-CAP®

ALUMINUM TRENCH

FIBERGLASS

FRAME AND GRATE SYSTEMS

OIL SEPARATORS

Z874-12 TRENCH DRAIN SYSTEM



Standard Length: 80" (6.67')
Standard Grate Included: DGC

ENGINEERING SPECIFICATION

Channels shall be 80" long, 17" wide, and have a 12" wide throat. Modular channel sections shall be made of High Density Polyethylene (HDPE), have interlocking ends, and radiused bottom. Channel shall be provided with no slope (neutral) or with a 1.00% built-in slope. Channels shall be available with inverts ranging from 9.25" to 34.21". Channels shall have clips attached to the frame to accommodate vertical rebar for positioning and anchoring purposes. Choices of class A thru F grates shall be available with H-20 and/or FAA load ratings and/or ADA compliance with mechanical lockdown devices. A heavy-duty steel frame shall be provided to distribute weight between the grates and the HDPE channel. End caps and catch basins shall be available to complement the channels and grates. End outlets, bottom outlets, and side outlets shall be available in 4", 6", and 8" diameters. Trench drain shall be Flo-Thru model Z874-12.

Trench Number	Shallow Invert		Deep Invert		Flow Rate		
	In.	mm	In.	mm	CFS	GPM	LPS
1201P	9.250	235	10.082	256	3.306	1475	93
1202P	10.082	256	10.914	277	3.941	1758	111
1203P	10.914	277	11.746	298	4.589	2048	129
1204P	11.746	298	12.578	319	5.248	2341	148
1205P	12.578	319	13.41	341	5.915	2639	166
1205NP	13.410	341	13.410	341	-	-	-
1206P	13.410	341	14.242	362	6.589	2939	185
1207P	14.242	362	15.074	383	7.268	3243	205
1208P	15.074	383	15.906	404	7.953	3548	224
1209P	15.906	404	16.738	425	8.641	3855	243
1210P	16.738	425	17.57	446	9.333	4164	263
1211P	17.57	446	18.402	467	10.028	4474	282
1212P	18.402	467	19.234	489	10.726	4785	302
1213P	19.234	489	20.066	510	11.426	5098	322
1214P	20.066	510	20.898	531	12.128	5411	341
1215P	20.898	531	21.73	552	12.832	5725	361
1215NP	21.73	552	21.73	552	-	-	-
1216P	21.730	552	22.562	573	13.538	6040	381
1217P	22.562	573	23.394	594	14.244	6355	401
1218P	23.394	594	24.226	615	14.953	6671	421
1219P	24.226	615	25.058	636	15.662	6988	441
1220P	25.058	636	25.890	658	16.372	7304	461
1221P	25.89	658	26.722	679	17.084	7622	481
1222P	26.722	679	27.554	700	17.796	7940	501
1223P	27.554	700	28.386	721	18.509	8258	521
1224P	28.386	721	29.218	742	19.223	8576	541
1225P	29.218	742	30.05	763	19.937	8895	561
1225NP	30.05	763	30.05	763	-	-	-
1226P	30.05	763	30.882	784	20.652	9214	581
1227P	30.882	784	31.714	806	21.367	9533	601
1228P	31.714	806	32.546	827	22.083	9852	622
1229P	32.546	827	33.378	848	22.8	10172	642
1230P	33.378	848	34.21	869	23.517	10492	662

PREFIX	DESCRIPTION	NO. OF GRATES ANCHOR STRAPS	TRENCH NUMBERS	PER FOOT
Z*	80" High Density Polyethylene (HDPE) Channel, Heavy-Duty Frame with Anchor Studs, Ductile Iron Grate - Class C with Four Stainless Steel Lockdowns and Anchor Tabs	4	1201P to 1230P	349.00

OUTLET ADAPTERS		ADD/EACH
-E1	Closed End Cap	223.00
-E4	4" No-Hub End Outlet	268.00
-E6	6" No-Hub End Outlet	268.00
-E8	8" No-Hub End Outlet	268.00
-E10	10" No-Hub End Outlet	524.00
-U4	4" No-Hub Bottom Outlet	268.00
-U6	6" No-Hub Bottom Outlet	268.00
-U8	8" No-Hub Bottom Outlet	268.00
-U12	12" No-Hub Bottom Outlet	POA

GRATE OPTIONS		ADD/FOOT
-BDC	Black Acid Resistant Ductile - Class C	261.00
-BDF	Black Acid Resistant Ductile - Class F	419.00
‡ -DCC	Ductile Iron Solid Cover - Class C	217.00
‡ -DCF	Ductile Iron Solid Cover - Class F	354.00
‡ -DGC	Ductile Iron Slotted Grate - Class C	*
‡ -DGF	Ductile Iron Slotted Grate - Class F	196.00
-GDC	Galvanized Ductile Iron Grate - Class C	180.00
-GDF	Galvanized Ductile Iron Grate - Class F	353.00
-GG	Fiberglass Grate - Class A	477.00
-GHPD	Galvanized Heelproof Longitudinal Ductile Iron Grate - Class C	417.00
‡ -HPD	Heel-Proof Longitudinal Ductile Iron Grate - Class C	256.00
-SBG	Stainless Steel Bar Grate - Class C	658.00

MADE IN THE U.S.A. (HIGHLIGHTED IN GRAY)

GRATE OPTIONS		ADD/FOOT
‡ -ADA-USA	Meets Americans with Disabilities Act Requirements - Class C	208.00
‡ -DGC-USA	Ductile Iron Slotted Grate - Class C	184.00
‡ -DGF-USA	Ductile Iron Slotted Grate - Class F	287.00
-GADA-USA	Galvanized Ductile ADA Slotted Grate - Class C	282.00
-GDC-USA	Galvanized Ductile Slotted Grate - Class C	259.00
-GDF-USA	Galvanized Ductile Slotted Grate - Class F	443.00

MISCELLANEOUS OPTIONS		ADD/FOOT
-CBF	Black Acid Resistant Coated Frame	75.00
-HDG/GFA	Galvanized Frame Assembly	75.00
-SF/HDS	Type 304 Heavy Duty Stainless Steel Top Frame	422.00
-VP	Vandal Resistant	13.00

		ADD/EACH
-DB	Bottom Dome Strainer	310.00
-IB	Inline Catch Basin - 40" Long with DGC Grate	1,564.00
	For Optional Grates Add/Foot Price Above	*

SERVICE CHARGES		ADD/EACH
Fabrication	45°; 90°; Tee; Side Outlet Fabs	1,400.00
	Cross Fabs	2,804.00
Class F Reinforcement	-for 90° Fab x 1, Tee Fab x 1, Cross Fab x 2	1,320.00
M-M or F-F connection	for channels sloping to-from center	710.00
Cutting		369.00

*Regularly furnished unless otherwise specified.

‡Indicates grate will be shipped unpainted. For an additional charge, Zurn will paint the grates. Please contact your customer service representative for pricing.

For additional product information, please visit www.zurn.com.

Z874-18 TRENCH DRAIN SYSTEM



Standard Length: 80" (6.67')
Standard Grate Included: DGC

ENGINEERING SPECIFICATION

Channels shall be 80" long, 23" wide, and have an 18" wide throat. Modular channel sections shall be made of High Density Polyethylene (HDPE), have interlocking ends, and radiused bottom. Channel shall be provided with no slope (neutral) or with a 1.00% built-in slope. Channels shall be available with inverts ranging from 10.25" to 35.1". Channels shall have clips attached to the frame to accommodate vertical rebar for positioning and anchoring purposes. Choices of class A thru F grates shall be available with H-20 and/or FAA load ratings and/or ADA compliance with mechanical lockdown devices. A heavy-duty steel frame shall be available to complement the channels and grates. End outlets, bottom outlets, and side outlets shall be available in 4", 6", 8", and 12" diameters. Trench drain shall be Flo-Thru model Z874-18.

Trench Number	Shallow Invert		Deep Invert		Flow Rate		
	In.	mm	In.	mm	CFS	GPM	LPS
1801P	10.25	260	11.082	281	6.85	3058	193
1802P	11.082	281	11.914	303	8.04	3589	226
1803P	11.914	303	12.746	324	9.26	4132	261
1804P	12.746	324	13.578	345	10.5	4685	296
1805P	13.578	345	14.41	366	11.76	5247	331
1805N	14.41	366	14.41	366	-	-	-
1806P	14.41	366	15.242	387	13.04	5816	367
1807P	15.242	387	16.074	408	14.33	6392	403
1808P	16.074	408	16.906	429	15.63	6973	440
1809P	16.906	429	17.738	451	16.94	7559	477
1810P	17.738	451	18.57	472	18.27	8149	514
1811P	18.57	472	19.402	493	19.6	8743	552
1812P	19.402	493	20.234	514	20.93	9340	589
1813P	20.234	514	21.066	535	22.28	9940	627
1814P	21.066	535	22.898	556	23.63	10542	665
1815P	21.898	556	22.73	577	24.98	11147	703
1815N	22.73	577	22.73	577	-	-	-
1816P	22.73	577	23.562	598	26.34	11753	741
1817P	23.562	598	24.394	620	27.71	12362	780
1818P	24.394	620	25.226	641	29.08	12972	818
1819P	25.226	641	26.058	662	30.45	13584	857
1820P	26.058	662	26.89	683	31.82	14198	896
1821P	26.89	683	27.722	704	33.2	14812	934
1822P	27.722	704	28.554	725	34.58	15428	973
1823P	28.554	725	29.386	746	35.96	16045	1012
1824P	29.386	746	30.218	768	37.35	16663	1051
1825P	30.218	768	31.05	789	38.74	17282	1090
1825N	31.05	789	31.05	789	-	-	-
1826P	31.05	789	31.882	810	40.12	17901	1129
1827P	31.882	810	32.714	831	41.52	18522	1168
1828P	32.714	831	33.546	852	42.91	19143	1208
1829P	33.546	852	34.378	873	44.3	19765	1247
1830P	34.378	873	35.21	894	45.7	20388	1286

PREFIX	DESCRIPTION	NO. OF GRATES ANCHOR STRAPS	TRENCH NUMBERS	PER FOOT
Z*	80" High Density Polyethylene (HDPE) Channel, Heavy-Duty Frame with Anchor Studs, Ductile Iron Grate - Class C with Four Stainless Steel Lockdowns and Anchor Tabs	4	1801P to 1830P	490.00

OUTLET ADAPTERS		ADD/EACH
-E1	Closed End Cap	258.00
-E4	4" No-Hub End Outlet	353.00
-E6	6" No-Hub End Outlet	353.00
-E8	8" No-Hub End Outlet	353.00
-E12	12" No-Hub End Outlet	POA
-U4	4" No-Hub Bottom Outlet	353.00
-U6	6" No-Hub Bottom Outlet	353.00
-U8	8" No-Hub Bottom Outlet	353.00
-U12	12" No-Hub Bottom Outlet	POA
-U18	18" No-Hub Bottom Outlet	POA

GRATE OPTIONS		ADD/FOOT
-BDC	Black Acid Resistant Ductile - Class C	-
‡ -DCC	Ductile Iron Solid Cover - Class C	319.00
‡ -DCF	Ductile Iron Solid Cover - Class F	433.00
‡ -DGC	Ductile Iron Slotted Grate - Class C	*
‡ -DGF	Ductile Iron Slotted Grate - Class F	223.00
-GDC	Galvanized Ductile Iron Grate - Class C	207.00
-GDE	Galvanized Ductile Iron Slotted Grate - Class E	273.00
-GDF	Galvanized Ductile Iron Grate - Class F	367.00
-GHPD	Galvanized Heel-Proof Ductile Grate - Class C	570.00
‡ -HPD	Heel-Proof Longitudinal Ductile Iron Grate - Class C	417.00
-SBG	Stainless Steel Bar Grate - Class C	2,497.00

MADE IN THE U.S.A. (HIGHLIGHTED IN GRAY)

GRATE OPTIONS		ADD/FOOT
‡ -DGE-USA	Ductile Iron Slotted Grate - Class E	238.00
-GDE-USA	Galvanized Ductile Slotted Grate - Class E	517.00

MISCELLANEOUS OPTIONS		ADD/FOOT
-CBF	Black Acid Resistant Coated Frame	75.00
-HDG	Galvanized Frame Assembly	75.00
-SF/HDS	Type 304 Heavy Duty Stainless Steel Top Frame	422.00
-VP	Vandal-Proof Lockdown Assembly	13.00

		ADD/EACH
-DB	Bottom Dome Strainer	310.00
-IB	Inline Catch Basin - 40" Long with DGC Grate	2,096.00
	For Optional Grates Add/Foot Price Above	*

SERVICE CHARGES		ADD/EACH
Fabrication	-45°; 90°; Tee; Side Outlet Fabs	1,400.00
	-Cross Fabs	2,804.00
Class F Reinforcement	-for 90° Fab x 1, Tee Fab x 1, Cross Fab x 2	1,417.00
M-M or F-F connection	for channels sloping to-from center	710.00
Cutting		369.00

Z874-21 TRENCH DRAIN SYSTEM



Standard Length: 80" (6.67')
Standard Grate Included: DGC

ENGINEERING SPECIFICATION

Channels shall be 80" long, 26-1/4" wide, and have a 21-1/4" wide throat. Modular channel sections shall be made of High Density Polyethylene (HDPE), have interlocking ends, and radiused bottom. Channel shall be provided with no slope (neutral) or with a 1.00% built-in slope. Channels shall be available with inverts ranging from 11.25" to 36.21". Channels shall have clips attached to the frame to accommodate vertical rebar for positioning and anchoring purposes. Choices of class A thru F grates shall be available with H-20 and/or FAA load ratings and/or ADA compliance with mechanical lockdown devices. A heavy-duty steel frame shall be provided to distribute weight between the grates and the HDPE channel. End caps and catch basins shall be available to complement the channels and grates. End outlets, bottom outlets, and side outlets shall be available in 4", 6", 8", 12", and 18" diameters. Trench drain shall be Flo-Thru model Z874-21.

Trench Number	Shallow Invert		Deep Invert		Flow Rate		
	In.	mm	In.	mm	CFS	GPM	LPS
2101P	11.25	286	12.082	307	8.369	3734	236
2102P	12.082	305	12.914	328	9.857	4398	277
2103P	12.914	328	13.746	349	11.388	5081	320
2104P	13.746	349	14.578	370	12.953	5779	365
2105P	14.578	370	15.41	391	14.549	6491	409
2105NP	15.41	391	15.41	391	-	-	-
2106P	15.41	391	16.424	417	16.17	7214	455
2107P	16.424	417	17.074	434	17.814	7948	501
2108P	17.074	434	17.906	455	19.478	8690	548
2109P	17.906	455	18.738	476	21.159	9440	595
2110P	18.738	476	19.57	497	22.855	10197	643
2111P	19.57	497	20.402	518	24.565	10960	691
2112P	20.402	518	21.234	539	26.287	11728	740
2113P	21.234	539	22.066	560	28.02	12501	789
2114P	22.066	560	22.898	582	29.763	13279	838
2115P	22.898	582	23.73	603	31.514	14060	887
2115NP	23.73	603	23.73	603	-	-	-
2116P	23.73	603	24.562	624	33.274	14845	936
2117P	24.562	624	25.394	645	35.041	15633	986
2118P	25.394	645	26.226	666	36.814	16424	1036
2119P	26.226	666	27.058	687	38.594	17218	1086
2120P	27.058	687	27.89	701	40.379	18015	1136
2121P	27.89	701	28.722	729	42.169	18814	1187
2122P	28.722	729	29.554	751	43.964	19614	1237
2123P	29.554	751	30.386	772	45.763	20417	1288
2124P	30.386	772	31.218	793	47.567	21222	1339
2125P	31.218	793	32.05	814	49.374	22028	1390
2125NP	32.05	814	32.05	814	-	-	-
2126P	32.05	814	32.882	835	51.184	22836	1440
2127P	32.882	835	33.714	856	52.998	23645	1492
2128P	33.714	856	34.546	878	54.815	24455	1543
2129P	34.546	878	35.378	899	56.634	25267	1594
2130P	35.378	899	36.21	920	58.457	26080	1645

PREFIX	DESCRIPTION	NO. OF GRATES ANCHOR STRAPS	TRENCH NUMBERS	PER FOOT
Z*	80" High Density Polyethylene (HDPE) Channel, Heavy-Duty Frame with Anchor Studs, Ductile Iron Grate - Class C with Four Stainless Steel Lockdowns and Anchor Tabs	4	2101P to 2130P	602.00

OUTLET ADAPTERS		ADD/EACH
-E1	Closed End Cap	268.00
-E4	4" No-Hub End Outlet	353.00
-E6	6" No-Hub End Outlet	353.00
-E8	8" No-Hub End Outlet	353.00
-E12	12" No-Hub End Outlet	POA
-E18	18" No-Hub End Outlet	POA
-U4	4" No-Hub Bottom Outlet	353.00
-U6	6" No-Hub Bottom Outlet	353.00
-U8	8" No-Hub Bottom Outlet	353.00
-U12	12" No-Hub Bottom Outlet	POA
-U18	18" No-Hub Bottom Outlet	POA

GRATE OPTIONS		ADD/FOOT
-BDC	Black Acid Resistant Ductile - Class C	261.00
-BDF	Black Acid Resistant Ductile - Class F	419.00
‡ -DCC	Ductile Iron Solid Cover - Class C	397.00
‡ -DGC	Ductile Iron Slotted Grate - Class C	*
‡ -DGF	Ductile Iron Slotted Grate - Class F	250.00
-GDC	Galvanized Ductile Iron Grate - Class C	320.00
-GDF	Galvanized Ductile Iron Grate - Class F	385.00
-GG	Fiberglass Grate - Class A	766.00
-GHPD	Galvanized Heel-Proof Ductile Grate - Class C	770.00
‡ -HPD	Heel-Proof Longitudinal Ductile Iron Grate - Class C	409.00

MISCELLANEOUS OPTIONS		ADD/EACH
-IB	Inline Catch Basin - 40" Long with DGC Grate	2,498.00
	For Optional Grates Add/Foot Price Above	*

		ADD/FOOT
-VP	Vandal-Proof Lockdown Assembly	13.00

MADE IN THE U.S.A. (HIGHLIGHTED IN GRAY)

GRATE OPTIONS		ADD/FOOT
‡ -DGE-USA	Ductile Iron Slotted Grate - Class E	289.00
-GDE-USA	Galvanized Ductile Iron Grate - Class E	571.00

MISCELLANEOUS OPTIONS		ADD/FOOT
-CBF	Black Acid Resistant Coated Frame	75.00
-HDG	Galvanized Frame Assembly	75.00
-SF/HDS	Type 304 Heavy Duty Stainless Steel Top Frame	422.00

		ADD/EACH
-DB	Bottom Dome Strainer	310.00

SERVICE CHARGES		ADD/EACH
Fabrication	-45°; 90°; Tee; Side Outlet Fabs	1,400.00
	-Cross Fabs	2,804.00

Class F Reinforcement	-for 90° Fab x 1, Tee Fab x 1, Cross Fab x 2	1,442.00
-----------------------	--	----------

M-M or F-F connection	for channels sloping to-from center	710.00
-----------------------	-------------------------------------	--------

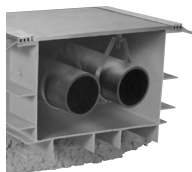
Cutting		369.00
---------	--	--------

*Regularly furnished unless otherwise specified.

‡Indicates grate will be shipped unpainted. For an additional charge, Zurn will paint the grates. Please contact your customer service representative for pricing.

For additional product information, please visit www.zurn.com.

Z874-U-XX-LDRA LIGHT-DUTY UTILITY TRENCH WITH ALUMINUM FRAME, CLAMP, AND SOLID COVER



The Z874-U is a neutral, non-sloped utility drain system. Depths of this system may range from 4" to 30".

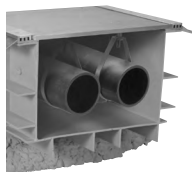
ENGINEERING SPECIFICATION

Z874-U-XX-LDRA Utility Trench Drainage System. High Density Polyethylene (HDPE) drain channel. All sections modular 40" lengths with interlocking ends. Complete with aluminum frame assembly at surface and light-duty aluminum (LDRA) solid cover. Recessed 1/8" for linoleum application.

PREFIX	DESCRIPTION	NO. OF GRATES PER CHANNEL	PER FOOT
Z*	40" High Density Polyethylene (HDPE) Channel with Aluminum Frame, Clamp, and Solid Cover	2	

MADE IN THE U.S.A. (HIGHLIGHTED IN GRAY)		PER FOOT
End Caps		261.00
874-U-12-LDRA	12" Throat Opening - Class A	769.00
874-U-14-LDRA	14" Throat Opening - Class A	821.00
874-U-16-LDRA	16" Throat Opening - Class A	874.00
874-U-18-LDRA	18" Throat Opening - Class A	927.00
874-U-20-LDRA	20" Throat Opening - Class A	983.00
874-U-22-LDRA	22" Throat Opening - Class A	1,035.00
874-U-24-LDRA	24" Throat Opening - Class A	1,085.00
874-U-26-LDRA	26" Throat Opening - Class A	1,166.00
874-U-28-LDRA	28" Throat Opening - Class A	1,220.00
SERVICE CHARGES		ADD/EACH
Fabrication	- 45°; 90°; Tee Fabs	704.00
	- Cross Fabs	1,400.00
Cutting		364.00

Z874-U-XX-LDRS LIGHT-DUTY UTILITY TRENCH WITH ALUMINUM FRAME AND CLAMP WITH SOLID STEEL COVER



The Z874-U is a neutral, non-sloped utility drain system. Depths of this system may range from 4" to 30".

ENGINEERING SPECIFICATION

Z874-U-XX-LDRS Utility Trench Drainage System. High Density Polyethylene (HDPE) drain channel. All sections modular 40" lengths with interlocking ends. Complete with aluminum frame assembly at surface and light-duty solid steel (LDRS) cover. Recessed 1/8" for linoleum application.

PREFIX	DESCRIPTION	NO. OF GRATES PER CHANNEL	PER FOOT
Z*	40" High Density Polyethylene (HDPE) Channel with Aluminum Frame and Clamp with Solid Steel Cover	2	

MADE IN THE U.S.A. (HIGHLIGHTED IN GRAY)		PER FOOT
End Caps		261.00
874-U-12-LDRS	12" Throat Opening - Class A	524.00
874-U-14-LDRS	14" Throat Opening - Class A	546.00
874-U-16-LDRS	16" Throat Opening - Class A	570.00
874-U-18-LDRS	18" Throat Opening - Class A	677.00
874-U-20-LDRS	20" Throat Opening - Class A	614.00
874-U-22-LDRS	22" Throat Opening - Class A	630.00
874-U-24-LDRS	24" Throat Opening - Class A	650.00
874-U-26-LDRS	26" Throat Opening - Class A	671.00
874-U-28-LDRS	28" Throat Opening - Class A	695.00
SERVICE CHARGES		ADD/EACH
Fabrication	- 45°; 90°; Tee Fabs	704.00
	- Cross Fabs	1,400.00
Cutting		364.00

Z874-U-XX-HD HEAVY-DUTY UTILITY TRENCH WITH STEEL FRAME AND DUCTILE IRON SOLID COVER



The Z874-U is a neutral, non-sloped utility drain system. Depths of this system may range from 4" to 30".

ENGINEERING SPECIFICATION

Z874-U-XX-HD Heavy-Duty Utility Trench Drainage System with Ductile Solid Cover. High Density Polyethylene (HDPE) drain channel. All sections modular 80" or 8' lengths with interlocking ends. Complete with Dura-Coated steel frame system and ductile iron solid cover.

PREFIX	DESCRIPTION	NO. OF GRATES PER CHANNEL	PER FOOT
Z*	High Density Polyethylene (HDPE) Channel with Dura-Coated Steel Frame and Ductile Iron Solid Cover	4	

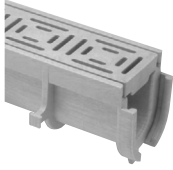
MADE IN THE U.S.A. (HIGHLIGHTED IN GRAY)		PER FOOT
End Caps		261.00
874-U-4-HD	4" Throat Opening - Class E	294.00
874-U-9-HD	9" Throat Opening - Class E	375.00
874-U-12-HD	12" Throat Opening - Class C	447.00
874-U-18-HD	18" Throat Opening - Class C	600.00
874-U-21-HD	21" Throat Opening - Class C	704.00
MISCELLANEOUS OPTIONS		DEDUCT/FOOT
- LC	Less Cover	-20.00
SERVICE CHARGES		ADD/EACH
Fabrication	- 45°; 90°; Tee Fabs	704.00
	- Cross Fabs	1,400.00
Cutting		364.00

For additional product information, please visit www.zurn.com.

*Regularly furnished unless otherwise specified.

†Indicates grate will be shipped unpainted. For an additional charge, Zurn will paint the grates. Please contact your customer service representative for pricing.

Z880 2-1/2" WIDE TRENCH DRAIN SYSTEM



Standard Length: 48" (4')
 Standard Grate Included: POG
 Colors Available: Gray (Standard), Sand, White, Brick Red, Blue

ENGINEERING SPECIFICATION

2-1/2" Wide Trench Drain System shall be 48" long and 2-1/2" wide. Drain shall be 3" deep. Drain shall be made of High Density Polyethylene (HDPE) and be UV-10 stabilized. Drain shall have bedding feet and/or bedding feet shall be used for positioning and anchoring purposes. Drain shall have tongue and groove snap fit connection. End outlets and bottom outlets shall be available in 1-1/2" diameter. Drain shall be Flo-Thru Z880. 24" long high-density polyethylene decorative grate (-POG) provided as standard.

NOTES

Additional custom colors for channels and gratings are available upon request. Please call your customer service representative for lead time and minimum runs.

PREFIX	DESCRIPTION	NO. OF GRATES PER CHANNEL	PER FOOT
Z*	48" Linear High Density Polyethylene (LHDPE) Modular Drain Channel with High Density Polyethylene Decorative Grate	2	48.00

OUTLET ADAPTERS		ADD/EACH
-E1	Closed End Cap	13.00
-E1.5	1-1/2" No-Hub End Outlet	13.00
-U1.5	1-1/2" No-Hub Bottom Outlet	13.00

GRATE OPTIONS		ADD/FOOT
-AWG	Aluminum Wire Grate - Class A	536.00
-BZ	Bronze Decorative Grate - Class A	310.00
-POG	Heel-Proof Polyethylene Grate - Class A	*
-SOG	Stainless Steel Decorative Grate - Class A	310.00
-SWG-B	Stainless Steel Wire Grate - Class B	226.00

MADE IN THE U.S.A. (HIGHLIGHTED IN GRAY)

MISCELLANEOUS OPTIONS		ADD/EACH
-C45	45-Degree Channel	34.00
-C90	90-Degree Channel	34.00
-G45	45-Degree Plastic Grate - Class A	23.00
-G45-BZ	Bronze 45-Degree Grate	138.00
-G90	90-Degree Plastic Grate - Class A	23.00
-G90-BZ	Bronze 90-Degree Grate	138.00
-SS45	45-Degree Stainless Steel Grate - Class A	138.00
-SS90	90-Degree Stainless Steel Grate - Class A	138.00
-SWG45	45-Degree Stainless Steel Wire Grate	271.00
-SWG90	90-Degree Stainless Steel Wire Grate	271.00

SERVICE CHARGES		ADD/EACH
Cutting		46.00

Z884 4-3/4" WIDE SHALLOW DRAIN SYSTEM



Standard Length: 40" (3.33')
 Standard Grate Included: HPP

ENGINEERING SPECIFICATION

Channels shall be 40" long, 4-3/4" wide, and have a 3-1/4" wide throat. Modular channel sections shall be made of polypropylene, have interlocking ends, and radiused bottom. Channel shall be provided flat (neutral) with a 2.875" invert. Channels shall have clips molded into the sides of the channel to accommodate vertical rebar for positioning and anchoring purposes. Choices of class A and B gratings shall be available with ADA compliance with mechanical lockdown devices. End caps and catch basins shall be available to complement the channels and gratings. End outlets in 2" diameter and bottom outlets in 3" diameter shall be available. Trench drain shall be Flo-Thru model Z884.

PREFIX	DESCRIPTION	NO. OF GRATES PER CHANNEL	PER FOOT
Z*	40" Polypropylene Channel with Heel-Proof (HDPE) Grate with Grate Lockdowns	2	59.00

GRATE OPTIONS		ADD/FOOT
-BZ	Bronze Decorative Grate - Class A	397.00
-CG	Cast Iron Slotted Grate - Class B	17.00
-HPP	Heel-Proof Polyethylene Grate - Class A	*

MADE IN THE U.S.A. (HIGHLIGHTED IN GRAY)

OUTLET ADAPTERS		ADD/EACH
-E1	Closed End Cap	29.00
-E2	2" No-Hub End Outlet	29.00
-U3	3" No-Hub Bottom Outlet	29.00

GRATE OPTIONS		ADD/FOOT
-FG	Fabricated Galvanized Steel Slotted Grate - Class A	12.00
-FS	Fabricated Stainless Steel Slotted Grate - Class A	66.00
-PG	Perforated Galvanized Steel ADA Grate - Class A	12.00
-PS	Perforated Stainless Steel ADA Grate - Class A	66.00

MISCELLANEOUS OPTIONS		ADD/FOOT
-SVF	Stainless Steel Veneer Frame	57.00
-VP	Vandal-Proof Center Lockdown	13.00

SERVICE CHARGES		ADD/EACH
Fabrication	45°; 90°; Tee	353.00
	Cross Fabs	701.00
Cutting		93.00

*Regularly furnished unless otherwise specified.

†Indicates grate will be shipped unpainted. For an additional charge, Zurn will paint the grates. Please contact your customer service representative for pricing.

For additional product information, please visit www.zurn.com.

Z883 6" WIDE SHALLOW TRENCH DRAIN SYSTEM



Standard Length: 40" (3.33')
Standard Grate Included: DGC

ENGINEERING SPECIFICATION

Channels shall be 40" long, 6" wide, and have a 4" wide throat. Modular channel sections shall be made of polypropylene, have interlocking ends, and radiused bottom. Channel shall be provided flat (neutral) with a 3-1/2" invert. Channels shall have clips molded into the sides of the channel to accommodate vertical rebar for positioning and anchoring purposes. Choices of class A, B, and C grates shall be available with ADA compliance with mechanical lockdown devices. End caps and catch basins shall be available to complement the channels and grates. End outlets in 2" diameter and bottom outlets in 2", 3", and 4" diameters shall be available. Trench drain shall be Flo-Thru model Z883.

PREFIX	DESCRIPTION	NO. OF GRATES PER CHANNEL	PER FOOT
Z*	40" Polypropylene Channel with Ductile Iron Grate - Class C with Grate Lockdowns	2	118.00
OUTLET ADAPTERS			ADD/EACH
-E1	Closed End Cap		38.00
-E2	2" No-Hub End Outlet		38.00
-U2	2" No-Hub Bottom Outlet		38.00
-U3	3" No-Hub Bottom Outlet		38.00
-U4	4" No-Hub Bottom Outlet		38.00
STANDARD GRATE OPTIONS			ADD/FOOT
+ -BDC	Black Acid Resistant Epoxy Coated Ductile Grate - Class C		54.00
+ -BG	Galvanized Ductile Iron Bar Grate - Class C		36.00
+ -DBG	Ductile Iron Cast Bar Grate - Class C		21.00
+ -DC	Ductile Iron Solid Cover - Class C		25.00
+ -DGC	Ductile Iron Slotted Grate - Class C		*
-GG	Fiberglass Grate - Class A		79.00
-GHPD	Galvanized Heel-Proof Ductile Grate - Class B		69.00
-HPD	Heel-Proof Longitudinal Ductile Grate - Class B		21.00
-HPP	Heel-Proof Polyethylene Grate - Class A		12.00
-LD	Ductile Iron Longitudinal Slotted Grate - Class B		21.00
-PVS	Paver Slot Grate - Class B		163.00
-PVSD	Heel Proof Double Paver Slot - Class B		POA
-PVSG	Galvanized Heel Proof Paver Slot - Class B		258.00
-PVSGD	Galvanized Heel Proof Double Paver Slot - Class B		POA
-PVSSD	Stainless Steel Heel Proof Double Paver Slot - Class B		POA
+ -RFGC	Reinforced Galvanized Steel Slotted Grate - Class C		49.00
+ -RFSC	Reinforced Stainless Steel Slotted Grate - Class C		126.00
+ -RPGC	Reinforced Galvanized Perforated Grate - Class C		49.00
+ -RPGRC	Reinforced Galvanized Perforated Reverse Punch Anti-Slip Grate - Class C		49.00
+ -RPSC	Reinforced Stainless Steel Perforated ADA Grate - Class C		126.00
+ RPSRC	Reinforced Stainless Steel Perforated Reverse Punch Anti-Slip Grate - Class C		126.00

DECORATIVE GRATE OPTIONS		ADD/FOOT
-BCD	Bronze Circular Decorative Grate - Class A	397.00
-BDD	Bronze Diagonal Decorative Grate - Class A	397.00
-BZ	Bronze Decorative Grate - Class A	397.00
+ -DCD	Ductile Circular Decorative Grate - Class C	25.00
-DDD	Ductile Diagonal Decorative Grate - Class A	25.00
-DOG	Ductile Decorative Grate - Class B	25.00
+ -DTW	Ductile Iron Tidal Wave Grate - Class C	34.00
-GMG	Galvanized Steel Mesh Grate - Class B	52.00
-HPB	Heel-Proof Slotted Grate - Class A	397.00
-HPS	Heel-Proof Stainless Steel Slotted Grate - Class A	397.00
-SCD	Stainless Steel Circular Decorative Grate - Class B	397.00
-SDD	Stainless Steel Diagonal Decorative Grate - Class B	397.00
-SMG	Stainless Steel Mesh Grate - Class B	158.00
-SOG	Stainless Steel Decorative Grate - Class B	397.00
-SWG-B	Stainless Steel Wire Grate - Class B	401.00
MISCELLANEOUS OPTIONS		ADD/FOOT
-DB	Bottom Dome Strainer	77.00
-SVF	Stainless Steel Veneer Frame	57.00
-VP	Vandal-Proof Center Lockdown	13.00

MADE IN THE U.S.A. (HIGHLIGHTED IN GRAY)		
STANDARD GRATE OPTIONS		ADD/FOOT
-AWG	Aluminum Wire Grate - Class A	580.00
+ -DGC-USA	Ductile Iron Slotted Grate - Class C	23.00
-FS	Fabricated Stainless Steel Slotted Grate - Class A	38.00
+ -PPC	Plastic Perforated ADA Grate - Class C	93.00
-PS	Stainless Steel Perforated ADA Grate - Class A	38.00
-PSR	Stainless Steel Perforated Reverse Punch Anti-Slip ADA Grate - Class A	38.00
DEDUCT/FOOT		
-FG	Fabricated Galvanized Steel Slotted Grate - Class A	-16.00
-PG	Galvanized Steel Perforated ADA Grate - Class A	-16.00
-PGR	Galvanized Perforated Reverse Punch Anti-Slip ADA Grate - Class A	-16.00
DECORATIVE GRATE OPTIONS		ADD/FOOT
-BZ	Bronze Decorative Grate - Class A	397.00
-NBZ-USA	Nickel Bronze Decorative Grate - Class A	548.00
SERVICE CHARGES		ADD/EACH
Fabrication	- 45°; 90°; Tee; Side Outlet Fabs	353.00
	- Cross Fabs	701.00
Cutting		93.00

*Indicates "non-dynamic"

*Regularly furnished unless otherwise specified.

†Indicates grate will be shipped unpainted. For an additional charge, Zurn will paint the grates. Please contact your customer service representative for pricing.

For additional product information, please visit www.zurn.com.

Z887 CATCH BASIN



Standard Grate Included: DGC

ENGINEERING SPECIFICATION

Catch Basins shall be 6" wide x 20" long x 24" deep, 12" wide x 24" long x 24" deep, or 24" wide x 24" long x 24" deep and shall be made of High Density Polyethylene (HDPE). Choices of class A thru F grates shall be available with H-20, FAA, and/or ADA compliance. Outlets in 2", 3", 4", 6", and 8" diameters shall be available. Catch Basin shall be Flo-Thru model Z887.

PREFIX	DESCRIPTION	TOP SIZE	APPROX. WT. LBS. (LESS GRATES)	LIST PRICE	
Z*	High Density Polyethylene (HDPE) Catch Basin with Ductile Iron Grate - Class C	6 x 20	17.0	615.00	
		12 x 24	14.6	1,014.00	
		24 x 24	19.9	1,360.00	
ADAPTERS				ADD	
-E3/U3	3" No-Hub End/Bottom Outlet Adapter			38.00	
-E4/U4	4" No-Hub End/Bottom Outlet Adapter			38.00	
-E6/U6	6" No-Hub End/Bottom Outlet Adapter			38.00	
-IA	Inlet Adapter (if more than one required) for Z886 Trench System			102.00	
-IA	Inlet Adapter (if more than one required) for Z882 Trench System			183.00	
GRATE OPTIONS			6X20	12X24	24X24
-BCD	Bronze Circular Decorative Grate - Class A		397.00	-	-
-BDC	Black Acid Resistant Epoxy Coated Ductile Grate - Class C		52.00	151.00	441.00
-BDD	Bronze Diagonal Decorative Grate - Class A		397.00	-	-
-BG	Galvanized Ductile Iron Bar Grate - Class C		102.00	-	-
	Class D		-	319.00	-
-DC	Ductile Iron Solid Cover - Class C		102.00	-	-
	Class E		-	201.00	-
-DCD	Ductile Circular Decorative Grate - Class C		102.00	-	-
-DDD	Ductile Diagonal Decorative Grate - Class A		102.00	-	-
-DGC	Ductile Iron Slotted Grate - Class C		*	*	*
-DGE	Ductile Iron Slotted Grate - Class E		102.00	88.00	-
-DGF	Ductile Iron Slotted Grate - Class F		-	201.00	789.00
-DOG	Ductile Decorative Grate - Class B		102.00	-	-
-DTW	Ductile Iron Tidal Wave Grate - Class C		105.00	-	-
-FGF	Ductile Iron Frame and Slotted Grate - Class F		150.00	-	-
-GDC	Galvanized Ductile Grate - Class C		52.00	246.00	441.00
-GDE	Galvanized Ductile Grate - Class E		136.00	289.00	-
-GDF	Galvanized Ductile Grate - Class F		-	441.00	874.00
-GFG	Galvanized Ductile Frame and Slotted Grate - Class F		196.00	-	-
-GG	Fiberglass Grate - Class A		150.00	196.00	511.00
-GHPD	Heel-Proof Slotted - Class B		98.00	191.00	-
-GHPDE	Galvanized Heel-Proof Ductile ADA Grate - Class E		183.00	353.00	-
-HPB	Bronze Heel-Proof Slotted Grate - Class A		397.00	-	-
-HPD	Heel-Proof Ductile ADA Grate - Class B		102.00	294.00	-
-HPDE	Heel-Proof Ductile ADA Grate - Class E		150.00	314.00	-
-HPP	Heel-Proof Polyethylene Grate - Class A		52.00	-	-
-HPS	Stainless Steel Heel-Proof Slotted Grate - Class A		397.00	-	-
-LD	Ductile Iron Longitudinal Slotted Grate - Class B		102.00	-	-
-RFGC	Reinforced Galvanized Steel Slotted Grate - Class C		98.00	247.00	-
-RFSC	Reinforced Galvanized Stainless Steel Slotted Grate - Class C		307.00	-	-

*Regularly furnished unless otherwise specified.

†Indicates grate will be shipped unpainted. For an additional charge, Zurn will paint the grates. Please contact your customer service representative for pricing.

GRATE OPTIONS		6X20	12X24	24X24
-RPGC	Reinforced Galvanized Perforated ADA Grate - Class C	98.00	247.00	-
-RPGRC	Reinforced Galvanized Perforated Reverse Punch Anti-Slip ADA Grate - Class C	98.00	247.00	-
-RPSC	Reinforced Stainless Steel Perforated ADA Grate - Class C	307.00	605.00	-
-RPSRC	Reinforced Stainless Steel Perforated Reverse Punch Anti-Slip ADA Grate - Class C	307.00	605.00	-
-SBG-E	Stainless Steel Bar Grate - Class E	369.00	908.00	-
-SCD	Stainless Steel Circular Decorative Grate - Class B	397.00	-	-
-SDD	Stainless Steel Diagonal Decorative Grate - Class B	397.00	-	-
-SOG	Stainless Steel Decorative Grate - Class B	397.00	-	-
-SWG-A	Stainless Steel Wire Grate - Class A	276.00	-	-
-SWG-B	Stainless Steel Wire Grate - Class B	663.00	-	-

MADE IN THE U.S.A. (HIGHLIGHTED IN GRAY)

GRATE OPTIONS		6X20	12X24	24X24
† -ADA-USA	Meets Americans with Disabilities Act Requirements - Class C	-	294.00	-
-AWG	Aluminum Wire Grate - Class A	POA	-	-
-BZ	Bronze Decorative Grate - Class A	397.00	-	-
-BDE-USA	Black Acid Resistant Epoxy Coated Ductile Grate - Class E	180.00	301.00	-
-DCE-USA	Ductile Solid Cover - Class E	125.00	-	-
† -DGC-USA	Ductile Iron Slotted Grate - Class C	110.00	188.00	-
† -DGE-USA	Ductile Iron Slotted Grate - Class E	122.00	208.00	-
-FG	Galvanized Steel Slotted Grate - Class A	54.00	102.00	201.00
-FGF-USA	Ductile Iron Frame and Slotted Grate - Class F	179.00	-	-
-FS	Fabricated Stainless Steel Slotted Grate - Class A	111.00	215.00	422.00
-GADA-USA	Galvanized Ductile ADA Slotted Grate - Class C	-	268.00	-
-GDC-USA	Galvanized Ductile Grate - Class C	126.00	259.00	-
-GDE-USA	Galvanized Ductile Grate - Class E	150.00	294.00	-
-GFG-USA	Galvanized Ductile Frame and Slotted Grate - Class F	259.00	-	-
-GHPDE-USA	Galvanized Heel-Proof Ductile ADA Grate - Class E	325.00	430.00	-
-HDD	Highway Domestic Ductile Grate - H20/H25 - Class C	117.00	-	-
-HPDE-USA	Heel Proof Longitudinal Ductile ADA Grate - Class E	289.00	311.00	-
-HR	Ductile Iron Non-Removable Heel-Proof Grate/Frame System - H20/H25 - Class C	125.00	-	-
-NBZ-USA	Nickel Bronze Decorative Grate - Class A	POA	-	-
-PG	Galvanized Steel Perforated ADA Grate - Class A	54.00	102.00	201.00
-PPC	Plastic Perforated ADA Grate - Class C	173.00	-	-
-PS	Perforated Stainless Steel ADA Grate - Class A	111.00	215.00	422.00
-SWG	Stainless Steel Wire Grate - Class A	1,569.00	2,441.00	-
MISCELLANEOUS OPTIONS				
-CBF	Black Acid Resistant Coated Frame	180.00	223.00	406.00
-EXT	12" Body Extension	-	-	744.00
-FT	Foul Air Trap	POA	POA	POA
-GFA/HDG	Galvanized Extra-Heavy-Duty Frame Assembly with Anchor Studs	180.00	223.00	406.00
-HD	Extra-Heavy-Duty Frame Assembly with Anchor Studs	93.00	180.00	268.00
-SF/HDS	Type 304 Heavy Duty Stainless Steel Top Frame	615.00	1,223.00	1,832.00
-SVF	Stainless Steel Veneer Frame	69.00	-	-
-Y	Sediment Bucket	207.00	268.00	353.00
-YS	Stainless Steel Sediment Bucket	397.00	571.00	961.00

For additional product information, please visit www.zurn.com.

ZS880 STAINLESS STEEL LINEAR SHOWER DRAIN



Patent 8,347,424

Standard Grate: -LS (Linear Slotted)

ENGINEERING SPECIFICATION

ZS880 All Type 304 (CF8) Fabricated Stainless Steel Linear Shower Drain. Complete with vertically adjustable anchoring support legs, anti-ponding V-shaped channel with 2" No-Hub outlet, adjustable secured leveling frame with integral tiling edge, and secured, light-duty Class A, slotted heel-proof grate

NOTES

**ZR Includes cost add for grate finish.



-LS



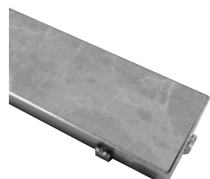
-BW



-DB



-SG



-TG (Tile By Others)



-WG

PREFIX	DESCRIPTION	PRODUCT DESIGNATION	APPROX WT. LBS.	GRATE OPEN AREA SQ. IN.	LIST PRICE/EACH
ZS*	Type 304 (CF8) Stainless Steel	-12	2.9	6	513.00
		-28	5.4	15	1,247.00
		-32	5.9	18	1,425.00
		-36	6.4	20	1,502.00
		-40	7.2	22	1,598.00
		-48	8.4	27	1,726.00
		-60	10.3	34	1,853.00
ZR**	Type 304 (CF8) Stainless Steel - Oil-Rubbed Bronze Finish	-72	12.4	41	2,139.00
		-12	2.9	6	549.00
		-28	5.4	15	1,350.00
		-32	5.9	18	1,629.00
		-36	6.4	20	1,694.00
		-40	7.2	22	1,790.00
		-48	8.4	27	1,950.00
		-60	10.3	34	2,108.00
		-72	12.4	41	2,461.00

OUTLET ADAPTERS		ADD/EACH	
-2	Two-Outlet Drain Body	88.00	
-2IP	2" Female Threaded Outlet (Add Per Outlet Connection)	91.00	
-3	Three-Outlet Drain Body - 2" No-Hub	172.00	
-CS	Straight Connector	69.00	
-C45	45 Degree Connector	75.00	
-C90	90 Degree Connector	75.00	
-EO	End Outlet - 2" No-Hub	N/C	
-FS	Outlet Filter Screen	35.00	
-LB	Lower Drain Body w/ Membrane Clamp Collar	53.00	
-SO	2" No-Hub Side Outlet (Add Per Outlet Connection)	73.00	
STANDARD GRATE OPTIONS		LIST/ADD	
-LS*	Linear Slotted	N/C	
DECORATIVE GRATE OPTIONS		LIST/EACH	
-BW	Basket Weave Grate	-12	31.00
		-28	41.00
		-32	56.00
		-36	59.00
		-40	65.00
		-48	79.00
		-60	98.00
-DB	Decorative Block Grate	-72	117.00
		-12	31.00
		-28	41.00
		-32	56.00
		-36	59.00
		-40	65.00
		-48	79.00
-SG	Serenity Grate	-60	98.00
		-72	117.00
		-12	31.00
		-28	41.00
		-32	56.00
		-36	59.00
		-40	65.00
-TG	Tile Inlay Grate	-48	79.00
		-60	98.00
		-72	117.00
		-12	31.00
		-28	41.00
		-32	56.00
		-36	59.00
-WG	Wave Grate	-40	65.00
		-48	79.00
		-60	98.00
		-72	117.00
		-12	31.00
		-28	41.00
		-32	56.00

For additional product information, please visit www.zurn.com.

*Regularly furnished unless otherwise specified.

†Indicates grate will be shipped unpainted. For an additional charge, Zurn will paint the grates. Please contact your customer service representative for pricing.

ZS890 6" STAINLESS STEEL TRENCH DRAIN SYSTEM



Standard Length: 80"
Standard Grate Included: FS or PS

ENGINEERING SPECIFICATION

Channels shall be 80" long, 6" wide, and have a 4" wide throat. Modular channel sections shall be made of 16-gauge 304 stainless steel and shall be provided with a neoprene gasket for flanged connections. Channel shall be provided either flat (neutral) or with a 1.04% pre-slope. Channels shall be available with inverts ranging from 3.5" to 16.00". Choices of class A thru E grates shall be available with H-20 and/or FAA load ratings and/or ADA compliance with mechanical lockdown devices. End caps and catch basins shall be available to complement the channels and grates. Trench drain shall be Flo-Thru model ZS890.

NOTES

Type 316 Stainless Steel trench is available upon request. Please call customer care for pricing and lead time.

PREFIX	DESCRIPTION	CHANNEL NUMBER	LIST PRICE/FOOT
ZS*	80" #16-Gauge Type 304 Stainless Steel Trench with Fabricated Stainless Steel Grate with Four Stainless Steel Lockdowns	89001 thru 89015	483.00

			ADD/EACH
Endcaps/Outlet			381.00

GRATE OPTIONS			ADD/FOOT
-GG	Fiberglass Grate - Class A		75.00
-HPS	Heel-Proof Stainless Steel Slotted Grate - Class A		305.00
-PVSS	Stainless Steel Paver Slot - Class B		314.00
-PVSSD	Stainless Steel Heel Proof Double Paver Slot - Class B		314.00
-RFSC	Reinforced Stainless Steel Slotted Grate - Class C		109.00
-RPSC	Reinforced Stainless Steel Perforated Grate - Class C		109.00
-RPSRC	Reinforced Stainless Steel Perforated Reverse Punch Anti-Slip Grate - Class C		109.00
-SBG	Stainless Steel Bar Grate - Class E		368.00
-SCD	Stainless Steel Circular Decorative Grate - Class B		334.00
-SDD	Stainless Steel Diagonal Decorative Grate - Class B		334.00
-SOG	Stainless Steel Decorative Grate - Class B		334.00
-SWG-B	Stainless Steel Wire Grate - Class B		370.00

MADE IN THE U.S.A. (HIGHLIGHTED IN GRAY)			
GRATE OPTIONS			ADD/FOOT
-FS	Fabricated Stainless Steel Slotted Grate - Class A		*
-PS	Stainless Steel Perforated Grate - Class A		N/C
-PSR	Stainless Steel Perforated Reverse Punch Anti-Slip Grate - Class A		N/C

MISCELLANEOUS OPTIONS			ADD/FOOT
-K	Anchor Flange		139.00
-KC	Clamp Collar and Pan with Weep Holes		229.00
-VG	Viton Gasket		140.00
-VP	Vandal-Proof Center Lockdown		13.00

			ADD/EACH
-DB			401.00
Bottom Drop-In Bucket			

SERVICE CHARGES			ADD/EACH
Fabrication	- 45°; 90°; Tee Fabs		3,159.00
	- Cross Fabs		6,315.00

Trench Number	Shallow Invert		Deep Invert		Flow Rate			Approx. Wt.	
	In.	mm	In.	mm	LPS	GPM	CFS	lb	Kg
89001	3.5	89	4.33	110.1	8	129	0.287	20	9
89002	4.33	110.1	5.17	131.2	10	163	0.363	21	9.5
89003	5.17	131.2	5.38	6.00	13	201	0.448	23	10.4
89004	6.00	152.4	6.83	173.6	15	239	0.532	24	10.9
89005	6.83	173.6	7.67	194.7	17	276	0.615	26	11.8
89006	7.67	194.7	8.5	215.9	20	313	0.697	27	12.2
89007	8.5	215.9	9.33	237.1	22	351	0.782	29	13.1
89008	9.33	237.1	10.17	258.2	25	389	0.867	30	13.6
89009	10.17	258.2	11.00	279.4	27	428	0.954	32	14.5
89010	11.00	279.4	11.83	300.6	29	465	1.036	34	15.4
89011	11.83	300.6	12.67	321.7	32	504	1.123	35	15.9
89012	12.67	321.7	13.50	342.9	34	543	1.21	37	16.8
89013	13.50	342.9	14.33	364.1	37	581	1.294	39	17.7
89014	14.33	364.1	15.17	385.2	39	620	1.381	40	18.1
89015	15.17	385.2	16.00	406.4	42	659	1.468	42	19

*Regularly furnished unless otherwise specified.

‡Indicates grate will be shipped unpainted. For an additional charge, Zurn will paint the grates. Please contact your customer service representative for pricing.

For additional product information, please visit www.zurn.com.

ZS895 12" STAINLESS STEEL TRENCH DRAIN SYSTEM



Standard Length: 96"
Standard Grate Included: FS or PS

ENGINEERING SPECIFICATION

Channels shall be 96" long, 12" wide, and have a 9-1/8" wide throat. Modular channel sections shall be made of 12-gauge 304 stainless steel. Channel shall be provided with no slope (neutral) or with a 1.04% built-in slope. Channels shall be available with inverts ranging from 6.00" to 18.50". Choices of class A thru C grates shall be available with H-20 and/or FAA load ratings and/or ADA compliance with mechanical lockdown devices. End caps and catch basins shall be available to complement the channels and grates. End outlets, bottom outlets, and side outlets shall be available in 4", 6", and 8" diameters. Trench drain shall be Flo-Thru model ZS895.

NOTES

Type 316 Stainless Steel trench is available upon request. Please call customer care for pricing and lead time.

MADE IN THE U.S.A. (HIGHLIGHTED IN GRAY)			
PREFIX	DESCRIPTION	CHANNEL NUMBER	LIST PRICE/FOOT
ZS*	96" #12-Gauge Type 304 Stainless Steel Trench with Stamped Stainless Steel Grate with Four Stainless Steel Lockdowns	89501 thru 89515	1,141.00
OPTIONS			ADD/EACH
Endcaps/Outlet			449.00
GRATE OPTIONS			ADD/FOOT
- FS	Fabricated Stainless Steel Slotted Grate - Class A		*
- GG	Fiberglass Grate (Not Made in U.S.A. Configurable) - Class A		54.00
- PS	Stainless Steel Perforated Grate - Class A		N/C
- PSR	Stainless Steel Perforated Reverse Punch Grate - Class A		N/C
- RFSC	Reinforced Stainless Steel Slotted Grate - Class C		387.00
- RPSC	Reinforced Stainless Steel Perforated Grate - Class C		387.00
- RPSRC	Reinforced Stainless Steel Perforated Reversed Punch Anti-Slip Grate - Class C		387.00
- SBG-E	Stainless Steel Bar Grate - Class E		800.00
- SBG-L	Stainless Steel Bar Grate - Class C		475.00
- SSCD	Reinforced Stainless Steel Solid Cover - Class B		420.00
- SWG	Stainless Steel Wire Grate		497.00
MISCELLANEOUS OPTIONS			ADD/FOOT
- K	Anchor Flange		168.00
- KC	Clamp Collar and Pan with Weep Holes		254.00
- VG	Viton Gasket		88.00
- VP	Vandal-Proof Center Lockdown		12.00
			ADD/EACH
- DB	Bottom Drop-In Bucket		362.00
SERVICE CHARGES			ADD/EACH
Fabrication - 45°; 90°; Tee Fabs			3,582.00
- Cross Fabs			7,159.00

Trench Number	Shallow Invert		Deep Invert		Flow Rate			Approx. Wt.	
	In.	mm	In.	mm	CFS	GPM	LPS	lb	Kg
89501	6.00	152.4	7.00	177.8	1.286	577	36	70	31.7
89502	7.00	177.8	8.00	203.2	2.324	1043	66	73	33.1
89503	8.00	203.2	9.00	228.6	2.705	1214	77	76	34.5
89504	9.00	228.6	10.00	254	3.095	1389	88	80	36.3
89505	10.00	254	11.00	279.4	3.487	1565	99	83	37.6
89506	11.00	279.4	12.00	304.8	3.886	1744	110	86	39
89507	12.00	304.8	13.00	330.2	4.289	1925	121	90	40.8
89508	13.00	330.2	14.00	355.6	4.692	2106	126	93	42.2
89509	14.00	355.6	15.00	381	5.102	2290	133	96	43.5
89510	15.00	381	16.00	406.4	5.512	2474	156	99	44.9
89511	16.00	406.4	17.00	431.8	5.924	2659	168	103	46.7
89512	17.00	431.8	18.00	457.2	6.341	2846	180	106	48

Z898 18" WIDE TRENCH DRAIN SYSTEM



Standard length: 60"
Standard grate: FS

ENGINEERING SPECIFICATION

18" Wide Pre-Sloped Trench Drainage System with 1/8" per foot slope. #12 Gage Type 304 Stainless Steel drain channel with bolted flanged connection complete with rubber neoprene flange gasket and stamped stainless steel grate.

PREFIX	DESCRIPTION	CHANNEL NUMBER	LIST PRICE/FOOT
Z*	#12 Gage Type 304 Stainless Steel Trench	89801 through 89806	989.00
Z*	#12 Gage Type 304 Stainless Steel Trench	89807 through 89820	1,271.00
ENDCAP/OUTLET OPTIONS			ADD/EACH
Endcaps/Outlet			658.00
GRATE OPTIONS - NO STANDARD GRATE			ADD/FOOT
-RFS	Reinforced Stainless Steel Slotted Grate - Class A		1,654.00
-RPS	Reinforced Stainless Steel Perforated Grate - Class A		1,654.00
-SBG	Stainless Steel Bar Grate - Class A		1,273.00
-GG	Fiberglass Grate - Class A		333.00
MISCELLANEOUS OPTIONS			ADD/EACH
-DB	Bottom Drop-In Bucket		381.00
-K	Anchor Flange		177.00
-KC	Clamp Collar and Pan with Weep Holes		267.00
-VP	Vandal-Proof Center Lockdown		13.00
SERVICE CHARGES			ADD/EACH
Fabrication - 45°; 90°; Tee Fabs			4,513.00
- Cross Fabs			9,021.00

Trench Number	Overall Depth				Max. Flow Rate			Approx. Wt. (Less Grates)	
	A Min.		B Max.		CFS	GPM	LPS	lb	Kg
	In.	mm	In.	mm					
89801	6.00	152	6.63	168	1.43	640	2423	60	27
89802	6.63	168	7.25	184	1.79	805	3047	62	28
89802N	7.25	184	7.25	184	-	-	-	64	29
89803	7.25	184	7.88	200	2.19	982	3717	65	29
89804	7.88	200	8.50	216	2.60	1167	4418	67	30
89804N	8.50	216	8.50	216	-	-	-	68	31
89805	8.50	216	9.13	232	3.03	1361	5152	69	31
89806	9.13	232	9.75	248	3.48	1562	5913	72	33
89806N	9.75	248	9.75	248	-	-	-	73	33
89807	9.75	248	10.38	264	3.94	1769	6696	74	34
89808	10.38	264	11.00	279	4.42	1982	7503	76	34
89808N	11.00	279	11.00	279	-	-	-	77	35
89809	11.00	279	11.63	295	4.90	2200	8328	78	35
89810	11.63	295	12.25	311	5.40	2423	9172	81	37
89810N	12.25	311	12.25	311	-	-	-	82	37
89811	12.25	311	12.88	327	5.91	2651	10035	83	38
89812	12.88	327	13.50	343	6.42	2882	10910	85	39
89812N	13.50	343	13.50	343	-	-	-	86	39
89813	13.50	343	14.13	359	6.95	3117	11799	88	40
89814	14.13	359	14.75	375	7.48	3356	12704	90	41
89814N	14.75	375	14.75	375	-	-	-	91	41
89815	14.75	375	15.38	391	8.02	3597	13616	92	42
89816	15.38	391	16.00	406	8.56	3841	14544	95	43
89816N	16.00	406	16.00	406	-	-	-	96	44
89817	16.00	406	16.63	422	9.11	4089	15479	97	44
89818	16.63	422	17.25	438	9.67	4338	16421	99	45
89818N	17.25	438	17.25	438	-	-	-	100	45
89819	17.25	438	17.88	454	10.23	4590	17375	102	46
89820	17.88	454	18.50	470	10.79	4844	18337	104	47

*Regularly furnished unless otherwise specified.

†Indicates grate will be shipped unpainted. For an additional charge, Zurn will paint the grates. Please contact your customer service representative for pricing.

For additional product information, please visit www.zurn.com.

Z894 24" WIDE TRENCH DRAIN SYSTEM



Standard length: 60"
Standard grate: FS

ENGINEERING SPECIFICATION

24" Wide Pre-Sloped Trench Drainage System with 1/8" per foot slope. #12 Gage Type 304 Stainless Steel drain channel with bolted flanged connection complete with rubber neoprene flange gasket.

PREFIX	DESCRIPTION	CHANNEL NUMBER	LIST PRICE/FOOT
Z*	#12 Gage Type 304 Stainless Steel Trench	Section 1-6 (6"-9.75" invert)	1,190.00
Z*	#12 Gage Type 304 Stainless Steel Trench	Section 7-12 (9.75"-13.5")	1,342.00
ENDCAP/OUTLET OPTIONS			ADD/EACH
Endcaps/Outlet			362.00
GRATE OPTIONS - NO STANDARD GRATE			ADD/FOOT
-RFS	Reinforced Stainless Steel Slotted Grate - Class A		1,846.00
-RPS	Reinforced Stainless Steel Perforated Grate - Class A		1,846.00
-SBG	Stainless Steel Bar Grate - Class A		4,038.00
-GG	Fiberglass Grate - Class A		608.00
MISCELLANEOUS OPTIONS			ADD/EACH
-DB	Bottom Drop-In Bucket		381.00
-K	Anchor Flange		177.00
-KC	Clamp Collar and Pan with Weep Holes		267.00
-GL	Grate Lockdown Assembly		51.00
-VP	Vandal-Proof Center Lockdown		13.00
SERVICE CHARGES			ADD/EACH
Fabrication - 45°; 90°; Tee Fabs			4,024.00
- Cross Fabs			8,042.00

Trench Number	Overall Depth				Max. Flow Rate			Approx. Wt. (Less Grates)	
	A Min.		B Max.		CFS	GPM	LPS	lb	Kg
	In.	mm	In.	mm					
89401	6.00	152	6.63	168	3	1299	82	70	32
89402	6.63	168	7.25	184	4	1636	103	72	33
89402N	7.25	184	7.25	184	-	-	-	73	33
89403	7.25	184	7.88	200	4	1991	126	74	34
89404	7.88	200	8.50	216	5	2362	149	76	34
89404N	8.50	216	8.50	216	-	-	-	77	35
89405	8.50	216	9.13	232	6	2746	173	78	35
89406	9.13	232	9.75	248	7	3142	198	80	36
89406N	9.75	248	9.75	248	-	-	-	81	37
89407	9.75	248	10.38	264	8	3548	224	82	37
89408	10.38	264	11.00	279	9	3963	250	84	38
89408N	11.00	279	11.00	279	-	-	-	85	39
89409	11.00	279	11.63	295	10	4387	277	86	39
89410	11.63	295	12.25	311	11	4817	304	88	40
89410N	12.25	311	12.25	311	-	-	-	89	40
89411	12.25	311	12.88	327	12	5253	331	90	41
89412	12.88	327	13.50	343	13	5696	359	92	42
89412N	13.50	343	13.50	343	-	-	-	93	42
89413	13.50	343	14.13	359	14	6143	388	94	43
89414	14.13	359	14.75	375	15	6595	416	96	44
89414N	14.75	375	14.75	375	-	-	-	97	44
89415	14.75	375	15.38	391	16	7051	445	98	44
89416	15.38	391	16.00	406	17	7512	474	100	45
89416N	16.00	406	16.00	406	-	-	-	101	46
89417	16.00	406	16.63	422	18	7975	503	102	46
89418	16.63	422	17.25	438	19	8442	533	104	47
89418N	17.25	438	17.25	438	-	-	-	105	48
89419	17.25	438	17.88	454	20	8912	562	106	48
89420	17.88	454	18.50	470	21	9385	592	108	49

For additional product information, please visit www.zurn.com.

*Regularly furnished unless otherwise specified.

†Indicates grate will be shipped unpainted. For an additional charge, Zurn will paint the grates. Please contact your customer service representative for pricing.

Z899-100 ELEVATOR DRAIN



Standard Length: Custom sizes from 36"-96"
Standard Grate Included: SWG Standard 4" No-Hub Outlet

ENGINEERING SPECIFICATION

Zurn Z899-100 elevator drain, stainless steel channel made of #11 gauge fabricated stainless steel conforming to ASTM A-240 (type 304) with center outlet, anchor straps, and bead blasted finish. Elevator drain is engineered to enhance flow through the system through use of funnel style outlet and flow directing ribbing structure. Standard grate to be stainless steel wire grate (-SWG) conforming to ASTM A-240 (type 304), with vandal proof grate lock downs, meets ADA and heel-proof requirements, has an open area 83.74 sq. in. / linear foot [1,771.94 sq. cm. / linear meter], and is listed as Class A per DIN EN1433 load classification, in addition to being tested to 2500 lbs per ASME A112.6.3. Optional fabricated stainless steel grate (-FS) available, conforming to ASTM A-240 (type 304), with vandal proof grate lock downs, meets ADA and heel-proof requirements, has an open area 34.13 sq. in. / linear foot [722.19 sq. cm. / linear meter], and is listed as Class A per DIN EN1433 load classification, in addition to being tested to 2500 lbs per ASME A112.6.3. This system has been designed to comply with SFFC Code, Section 511.1 for a 100 GPM flow rate. (Replaces Z895-94 and Z899).

NOTES

Note: Max 96 / Min 36 Length must be met to satisfy 100 GPM flow rate specification.

MADE IN THE U.S.A. (HIGHLIGHTED IN GRAY)			
PREFIX	DESCRIPTION	CHANNEL NUMBER	LIST PRICE
-Z*	Type 304 Stainless Steel (regularly furnished)	Z899-100-36-SWG	POA
	- Custom sizes from 36"-96" with SWG Stainless Wire Grate	Z899-100-48-SWG	POA
		Z899-100-60-SWG	POA
		Z899-100-72-SWG	POA
		Z899-100-96-SWG	POA
	(per foot)		
-Z*	Type 304 Stainless Steel (regularly furnished)	Z899-100-36-FS	POA
	- Custom sizes from 36"-96" with -FS Fabricated Slotted Stainless Steel Grate	Z899-100-48-FS	POA
		Z899-100-60-FS	POA
		Z899-100-72-FS	POA
		Z899-100-96-FS	POA
	(per foot)		
SUFFIX OPTIONS			ADD/EACH
-P	1/2" Trap Primer Connection		POA
-LAS	Less Anchor Straps		N/C
-BPC	Black Powder Coating		POA

Z891 STAINLESS STEEL SLOTTED DRAINAGE SYSTEM



Standard Length: 5'

ENGINEERING SPECIFICATION

Channels shall be 5' long, 3/4" wide slot and have a 2-1/4" wide throat. Modular channel sections shall be made of 16-gauge type 304 stainless steel. Channel shall be provided with no slope (neutral) or with a 1.04% built-in slope. Channels shall be available with inverts ranging from 4" to 10.25". End caps and catch basins shall be available to complement the channels. Trench drain shall be Flo-Thru model Z891.

NOTES

Type 316 Stainless Steel trench is available upon request. Please call customer care for pricing and lead time.

PREFIX	DESCRIPTION	LIST PRICE/FOOT
Z*	5' #16 Gauge Type 304 Modular Stainless Steel Slotted Trench Drain with Bolted Flange Connection	583.00
MADE IN THE U.S.A. (HIGHLIGHTED IN GRAY)		
OUTLET ADAPTERS		ADD/EACH
-E1	Closed End Cap	381.00
-E2	2" No-Hub End Outlet	381.00
-U2	2" No-Hub Bottom Outlet	381.00
MISCELLANEOUS OPTIONS		ADD/FOOT
-HD	Class E Heavy Duty Reinforcement	203.00
-K	Waterproofing Flange	154.00
-KC	Pan and Clamping Collar with Weep Holes	229.00

Trench Number	Shallow Invert		Deep Invert		Flow Rate			Approx. Wt.	
	In.	mm	In.	mm	GPM	CFS	LPS	lb	Kg
89101	4	102	4.63	118	51	3	194	15	6.8
89102	4.63	118	5.25	133	67	4	255	16	7.3
89103	5.25	133	5.88	149	84	5	316	17	7.7
89104	5.88	149	6.50	165	100	6	378	18	8.2
89105	6.50	165	7.13	181	117	7	441	19	8.6
89106	7.13	181	7.75	197	135	8	504	20	9.1
89107	7.75	197	8.38	213	150	9	568	21	9.6
89108	8.38	213	9.00	229	167	11	632	22	10
89109	9.00	229	9.63	245	184	12	696	23	10.5
89110	9.63	245	10.25	260	201	13	760	24	10.9

*Regularly furnished unless otherwise specified.

†Indicates grate will be shipped unpainted. For an additional charge, Zurn will paint the grates. Please contact your customer service representative for pricing.

For additional product information, please visit www.zurn.com.

Z893 STAINLESS STEEL FLOOR RECEPTOR WITH BAR GRATE



ENGINEERING SPECIFICATION

Channels are made of #14 ga. fabricated Stainless Steel conforming to ASTM A-240 (Type 304). Channels weigh less than 4.15 lb per linear foot, have a smooth, 1.5" radiused self cleaning bottom with a Manning's coefficient of .009. Channels have feet for patty pour or leveling studs standard to secure trench in its final location with 4" No-Hub bottom outlet. All welds must be performed by a certified welder per ASTM standard AWS D1.6. Channels to be produced in the U.S.A.

NOTES

Standard size units are shown, special sizes are available upon request.

SIZE W" X L"	GRATE WIDTH	SBG QTY.	LIST PRICE	-SBG LIST ADD	-RPSC/RFSC LIST ADD	-RFS/RPS LIST ADD
12x 24	11.25	1	4,353.00	*	561.00	-
12x 30	11.25	2	5,819.00	*	701.00	-
12x 36	11.25	2	5,819.00	*	842.00	-
12x 48	11.25	2	5,997.00	*	1,120.00	-
12x 60	11.25	3	7,463.00	*	1,399.00	-
12x 72	11.25	3	8,909.00	*	1,678.00	-
12x 84	11.25	4	10,340.00	*	1,958.00	-
12x 96	11.25	4	11,167.00	*	2,237.00	-
12x 108	11.25	5	12,871.00	*	2,516.00	-
12x 120	11.25	5	12,871.00	*	2,795.00	-
18x 24	17.25	1	6,517.00	*	-	692.00
18x 30	17.25	2	10,451.00	*	-	866.00
18x 36	17.25	2	10,451.00	*	-	1,037.00
18x 48	17.25	2	10,752.00	*	-	1,292.00
18x 60	17.25	3	14,199.00	*	-	1,727.00
18x 72	17.25	3	16,347.00	*	-	2,072.00
18x 84	17.25	4	18,266.00	*	-	2,417.00
18x 96	17.25	4	18,305.00	*	-	2,763.00
18x 108	17.25	5	22,386.00	*	-	3,106.00
18x 120	17.25	5	22,386.00	*	-	3,450.00
24x 24	23.25	2	9,717.00	*	-	3,690.00
24x 30	23.25	2	10,265.00	*	-	4,612.00
24x 36	23.25	2	10,265.00	*	-	5,533.00
24x 48	23.25	3	13,558.00	*	-	7,377.00
24x 60	23.25	3	13,919.00	*	-	9,222.00
24x 72	23.25	4	17,504.00	*	-	11,064.00
24x 84	23.25	5	21,360.00	*	-	12,908.00
24x 96	23.25	5	22,147.00	*	-	14,751.00
24x 108	23.25	6	25,440.00	*	-	16,595.00
24x 120	23.25	6	27,995.00	*	-	18,440.00
MISCELLANEOUS OPTIONS						ADD/EACH
-DB	Bottom Drop-In Bucket					105.00
-KC	Clamp Collar and Pan with Weep Holes					298.00
-VP	Vandal-Proof Center Lockdown					13.00

Size	No. of Grates	Dimensions in Inches [mm]					
		A		B		C	
		In.	mm	In.	mm	In.	mm
12	1	14.3	363	24	610	4	102
	2						
	3						
	5						
18	1	20.3	516	24	610	4	102
	2						
	3						
	5						
24	1	26.6	676	24	610	4	102
	2						
	3						
	5						

For additional product information, please visit www.zurn.com.

*Regularly furnished unless otherwise specified.

†Indicates grate will be shipped unpainted. For an additional charge, Zurn will paint the grates. Please contact your customer service representative for pricing.

PERMA-TRENCH®

STAINLESS / SAN-FLO®

SLOT DRAIN / HI-CAP®

ALUMINUM TRENCH

FIBERGLASS

FRAME AND GRATE SYSTEMS

OIL SEPARATORS

Z897 STAINLESS STEEL CATCH BASIN



Standard Grate Included: FS or PS

ENGINEERING SPECIFICATION

Catch Basins shall be 6" wide x 20" long x 24" deep, 12" wide x 24" long x 24" deep, or 24" wide x 24" long x 24" deep and shall be made of #16- or #12-gauge 304 stainless steel. Choices of class A thru E grates shall be available with H-20, FAA, and/or ADA compliance. Outlets in 2", 3", 4", 6", and 8" diameters shall be available. Catch Basin shall be Flo-Thru model Z897.

NOTES

Type 316 Stainless Steel trench is available upon request. Please contact customer care for pricing and lead time. Please contact customer care for mechanical lockdown availability and pricing.

PREFIX	DESCRIPTION	NOMINAL SIZE	APPROX. WT. LBS. (LESS GRATES)	STANDARD PRICE
Z*	Stainless Steel Catch Basin	6x20	49	6,009.00
		12x24	67	7,292.00
		24x24	88	9,735.00

OUTLET OPTIONS			
2", 3", 4", 6"			381.00

GRATE OPTIONS		6X20	12X24	24X24
-GG	Fiberglass Grate - Class A	130.00	254.00	440.00
-HPS	Heel-Proof Stainless Steel Slotted Grate - Class A	305.00	-	-
-RFSC	Reinforced Stainless Steel Slotted Grate - Class C	394.00	523.00	-
-RPSC	Reinforced Stainless Steel Perforated ADA Grate - Class C	394.00	523.00	-
-RPSRC	Reinforced Stainless Steel Perforated Reverse Punch Anti-Slip ADA Grate - Class C	394.00	523.00	-
-SBG-E	Stainless Steel Bar Grate - Class E	305.00	840.00	-
-SCD	Stainless Steel Circular Decorative Grate - Class B	305.00	-	-
-SDD	Stainless Steel Diagonal Decorative Grate - Class B	305.00	-	-
-SOD	Stainless Steel Decorative Grate - Class B	305.00	-	-
-SWG-A	Stainless Steel Wire Grate - Class A	1,453.00	2,259.00	-
-SWG-B	Stainless Steel Wire Grate - Class B	614.00	-	-

MADE IN THE U.S.A. (HIGHLIGHTED IN GRAY)

GRATE OPTIONS		6X20	12X24	24X24
-FS	Fabricated Stainless Steel Slotted Grate - Class A	*	*	*
-PS	Perforated Stainless Steel Grate - Class A	*	*	*
-SBG-L	Stainless Steel Bar Grate - Class C	-	454.00	-

MISCELLANEOUS OPTIONS			ADD/EACH
-K	Anchor Flange	162.00	281.00
-KC	Clamp Collar and Pan	241.00	359.00
-VP	Vandal-Proof Center Lockdown	122.00	122.00

			ADD/EACH
-YS	Stainless Steel Sediment Bucket	342.00	495.00

PERMA-TRENCH®

STAINLESS / SANI-FLO®

SLOT DRAIN / HI-CAP®

ALUMINUM TRENCH

FIBERGLASS

FRAME AND GRATE SYSTEMS

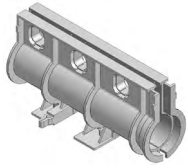
OIL SEPARATORS

*Regularly furnished unless otherwise specified.

‡Indicates grate will be shipped unpainted. For an additional charge, Zurn will paint the grates. Please contact your customer service representative for pricing.

For additional product information, please visit www.zurn.com.

Z888-4 SLOTTED DRAINAGE SYSTEM



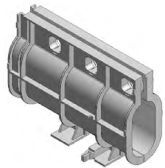
Standard Length: 40" (3.33')

ENGINEERING SPECIFICATION

Slot drain shall be 40" long, 4" wide, and 8" invert with 1/2" slot opening (ADA compliant). Drain shall be made of High Density Polyethylene (HDPE) and be UV-10 stabilized. Drain shall have rebar clips molded onto bedding feet and/or bedding feet shall be used for positioning and anchoring purposes. Overlap connection shall be interlocked.

MADE IN THE U.S.A. (HIGHLIGHTED IN GRAY)		
PREFIX	DESCRIPTION	PER FOOT
Z	40" High Density Polyethylene (HDPE) Slot Drain	65.00
ADAPTERS		ADD/EACH
-E1	Closed End Cap	27.00
-E2	2" No-Hub End Outlet	27.00
-E3	3" No-Hub End Outlet	27.00
-E4	4" No-Hub End Outlet	27.00
-U2	2" No-Hub Bottom Outlet	27.00
-U3	3" No-Hub Bottom Outlet	27.00
-U4	4" No-Hub Bottom Outlet	27.00
FRAME OPTIONS		ADD/FOOT
-EXT	4" Extension	16.00
-PVSS	Stainless Steel Frame with Slot	166.00
MISCELLANEOUS OPTIONS		ADD/EACH
-RD	Radius Connector	61.00
-90	90-Degree Connector	61.00

Z888-6 SLOTTED DRAINAGE SYSTEM



Standard Length: 40" (3.33')

ENGINEERING SPECIFICATION

Slot drain shall be 40" long, 4" wide, and 11-3/4" invert with 1/2" slot opening (ADA compliant). Drain shall be made of High Density Polyethylene (HDPE) and be UV-10 stabilized. Drain shall have rebar clips molded onto bedding feet and/or bedding feet shall be used for positioning and anchoring purposes. Overlap connection shall be interlocked.

MADE IN THE U.S.A. (HIGHLIGHTED IN GRAY)		
PREFIX	DESCRIPTION	PER FOOT
Z	40" High Density Polyethylene (HDPE) Slot Drain	75.00
ADAPTERS		ADD/EACH
-E1	Closed End Cap	32.00
-E2	2" No-Hub End Outlet	32.00
-E3	3" No-Hub End Outlet	32.00
-E4	4" No-Hub End Outlet	32.00
-U2	2" No-Hub Bottom Outlet	27.00
-U3	3" No-Hub Bottom Outlet	27.00
-U4	4" No-Hub Bottom Outlet	27.00
FRAME OPTIONS		ADD/FOOT
-EXT	4" Extension	16.00
-PVSS	Stainless Steel Frame with Slot	166.00

Z888-12,-18 HIGH CAPACITY TRENCH DRAIN SYSTEM SLOTTED DRAINAGE SYSTEM



Standard Length: 80" (6.67')

ENGINEERING SPECIFICATION

Slot drain shall be 80" long, Z888-12 (14-1/4" deep and 12" wide) or Z888-18 (21" deep and 12" wide). Slot shall be 1-3/4" wide and have spacer bars at 5" intervals to keep sides of slot apart. Drain shall be made of Linear Low Density Polyethylene (LLDPE). Drain shall have tongue-and-groove interlocking ends and clips molded into the sides of the channel to accommodate vertical rebar for positioning and anchoring purposes. Drain shall be available with a choice of pedestrian, bicycle, FAA, and/or H-20 grates. End outlets, bottom outlets, and side outlets shall be available in 4", 6", 8", 12", 18", and 24" diameters along with Cleanout sections (Z889-12 and Z889-18). Slot drain shall be Flo-Thru model Z888-12 or Z888-18.

MADE IN THE U.S.A. (HIGHLIGHTED IN GRAY)			
PREFIX	DESCRIPTION	CHANNEL NUMBER	PER FOOT
Z	80" Linear Low Density Polyethylene (LLDPE) Slot Drain	Z888-12 Z888-18	138.00 162.00
FRAME OPTIONS			ADD/FOOT
-HD	Ductile Iron Frame with Slot		102.00
-HDG	Galvanized Ductile Iron Frame with Slot		125.00
-HPD	Heel-Proof Ductile Iron Frame and Grate		102.00
-HPG	Galvanized Heel-Proof Ductile Iron Frame and Grate		125.00
ADAPTERS			ADD/EACH
		Z888-12	Z888-18
-E1	Closed End Cap	218.00	259.00
-E4	4" No-Hub End Outlet	441.00	-
-E6	6" No-Hub End Outlet	441.00	-
-E8	8" No-Hub End Outlet	441.00	537.00
-E12	12" No-Hub End Outlet	641.00	641.00
-E18	18" No-Hub End Outlet	-	900.00
FRAME OPTIONS			ADD/FOOT
-PSF	Pre-Sloped Frame		262.00
MISCELLANEOUS OPTIONS			ADD/EACH
-T12/18	Transition from -12 to -18		874.00
-T18/12	Transition from -18 to -12		874.00

Z889-12,-18 HIGH CAPACITY CLEANOUT PORT



Standard Length: 24"

Standard Grate: H20 Ductile Frame/Grate

ENGINEERING SPECIFICATION

Slot drain Cleanout Port shall be 24" long, Z889-12 (14-1/4" deep and 12" wide) or Z889-18 (21" deep and 12" wide). The grate shall be 8" wide. Cleanout Port shall be made of Linear Low Density Polyethylene (LLDPE), tongue-and-groove interlocking ends, and clips molded into the sides of the channel to accommodate vertical rebar for positioning and anchoring purposes. Cleanout Port shall be available with a choice of pedestrian, bicycle, FAA, and/or H-20 grates. End outlets, bottom outlets, and side outlets shall be available in 4", 6", 8", 12", 18", and 24" diameters. Slot drain Cleanout Port shall be Flo-Thru model Z889-12 or Z889-18.

MADE IN THE U.S.A. (HIGHLIGHTED IN GRAY)			
PREFIX	DESCRIPTION	CHANNEL NUMBER	PER FOOT
Z	24" High Capacity Cleanout Port	Z889-12 Z889-18	1,223.00 1,223.00
FRAME OPTIONS			ADD/EACH
-HDG	Galvanized Ductile Iron Frame with Slot		491.00
-HPD	Heel-Proof Ductile Iron Frame and Grate		353.00
-HPG	Galvanized Heel-Proof Ductile Iron Frame and Grate		491.00
ADAPTERS			ADD/EACH
		Z889-12	Z889-18
-E1	Closed End Cap	218.00	259.00
-E4	4" No-Hub End Outlet	441.00	-
-E6	6" No-Hub End Outlet	441.00	-
-E8	8" No-Hub End Outlet	441.00	537.00
-E12	12" No-Hub End Outlet	641.00	641.00
-E18	18" No-Hub End Outlet	-	900.00

*Regularly furnished unless otherwise specified.

‡Indicates grate will be shipped unpainted. For an additional charge, Zurn will paint the grates. Please contact your customer service representative for pricing.

For additional product information, please visit www.zurn.com.

ZA880-156 EXTRUDED ALUMINUM TRENCH DRAIN SYSTEM



Standard Length: 8'
Standard Grate Included: BZ

ENGINEERING SPECIFICATION

Zurn ZA880-156 Extruded Aluminum Trench Drain System. 1.63" interior width x 4" overall height x 8' long. Complete with 1.5" wide flanges on side. Material to be Aluminum Alloy T-6063. Cast bronze decorative grate conforms to ASTM B584 Copper Alloy No. 844. Trench is anodized after extrusion to match grate color.

PREFIX	DESCRIPTION	NO. OF GRATES PER CHANNEL	PER FOOT
ZA*	8' Extruded Aluminum Trench Drain System with Bronze Decorative Grate	4	524.00
OUTLET ADAPTERS			ADD/EACH
-E1	Closed End Cap		215.00
-E1.5	1-1/2" No-Hub End Outlet		188.00
-U1.5	1-1/2" No-Hub Bottom Outlet		188.00
GRATE OPTIONS			ADD/FOOT
-AWG	Aluminum Wire Grate - Class A		644.00
-AZ	Aluminum Decorative Grate - Class A		674.00
-BZ	Bronze Decorative Grate - Class A		*
-NBZ	Nickel Bronze Decorative Grate - Class A		21.00
MISCELLANEOUS OPTIONS			ADD/FOOT
-K	Anchor Flange		21.00
-KC	Clamp Collar and Pan (Includes -K)		620.00
-LF	Leveling Feet		248.00
SERVICE CHARGES			ADD/EACH
Fabrication	- 45°; 90°; Tee Fabs		522.00
	- Cross Fabs		1,053.00

ZA880-300A EXTRUDED ALUMINUM TRENCH DRAIN SYSTEM (PRICING WITHOUT GRATE)

ENGINEERING SPECIFICATION

Zurn ZA880-300A Extruded Aluminum Trench Drain System. 3.00" interior width x 6" overall height x 8' long. Complete with 2" wide flanges on both sides. Material to be Aluminum Alloy T-6063. Available with aluminum, bronze, ductile iron, and nickel bronze grates. Trench is anodized after extrusion to match grate color.

PREFIX	DESCRIPTION	NO. OF GRATES PER CHANNEL	CHANNEL NUMBER	PER FOOT
ZA	8' Extruded Aluminum Trench Drain System	4	880-300A	524.00
			880-300B	524.00
			880-340	524.00
OUTLET ADAPTERS				ADD/EACH
-E1	Closed End Outlet			248.00
-U2	2" No-Hub Bottom Outlet Channel			275.00
GRATE OPTIONS				ADD/FOOT
-AWG	Aluminum Wire Grate - Class A			POA
-AZ	Aluminum Decorative Grate - Class A			POA
-BZ	Bronze Decorative Grate - Class A			361.00
-DOG	Ductile Decorative Grate - Class A			93.00
-NBZ	Nickel Bronze Decorative Grate - Class A			500.00
MISCELLANEOUS OPTIONS				ADD/FOOT
-K	Anchor Flange			21.00
-KC	Clamp Collar and Pan (Includes -K)			620.00
-LF	Leveling Feet (ZA880-340 Only)			34.00
SERVICE CHARGES				ADD/EACH
Fabrication	- 45°; 90°; Tee Fabs			522.00
	- Cross Fabs			1,053.00

ZA880-300B EXTRUDED ALUMINUM TRENCH DRAIN SYSTEM (PRICING WITHOUT GRATE)

ENGINEERING SPECIFICATION

Zurn ZA880-300B Extruded Aluminum Trench Drain System. 3.00" interior width x 6" overall height x 8' long. Complete with 1.5" wide flanges on both sides. Material to be Aluminum Alloy T-6063. Available with aluminum, bronze, ductile iron, and nickel bronze grates. Trench is anodized after extrusion to match grate color.

ZA880-340 EXTRUDED ALUMINUM TRENCH DRAIN SYSTEM (PRICING WITHOUT GRATE)

ENGINEERING SPECIFICATION

Zurn ZA880-340 Extruded Aluminum Trench Drain System. 3.00" interior width x 4" overall height x 8' long. Material to be Aluminum Alloy T-6063. Available with aluminum, bronze, and nickel bronze grates. Trench is anodized after extrusion to match grate color.

For additional product information, please visit www.zurn.com.

*Regularly furnished unless otherwise specified.

†Indicates grate will be shipped unpainted. For an additional charge, Zurn will paint the grates. Please contact your customer service representative for pricing.

ZF806 6" WIDE TRENCH DRAIN SYSTEM



Standard Length: 10'
Standard Grate Included: DGC

ENGINEERING SPECIFICATION

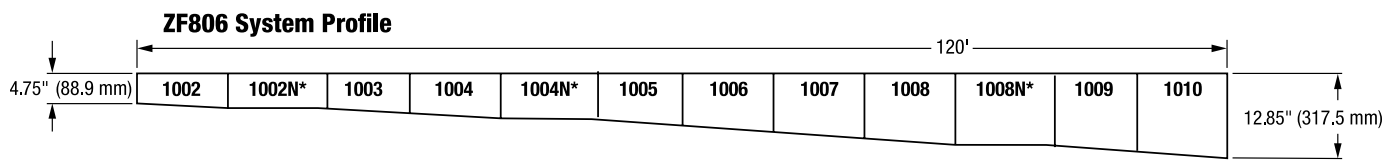
Channels shall be 10' long, 6" wide, and have a 4" wide throat. Modular channel sections shall be made of Fiber Reinforced Polyester (FRP) fiberglass, have interlocking ends, and radiused bottom. Channel shall be provided with no slope or with a .75% built-in slope. Channels shall be available with inverts ranging from 4.75" to 12.85". Choices of class A thru F grates shall be available with H-20 and/or FAA load ratings and/or ADA compliance with mechanical lockdown devices. A heavy-duty steel frame shall be provided to distribute weight between the grates and the FRP fiberglass channel. End caps and catch basins shall be available to complement the channels and grates. End outlets, bottom outlets, and side outlets shall be available in 2", 3", 4", and 6" diameters. Trench drain shall be Flo-Thru model ZF806.

NOTE

White acid resistant coating also available for frame and grate

Trench Number	Shallow Invert		Deep Invert		Flow Rate		
	In.	mm	In.	mm	CFS	GPM	LPS
1002	4.75	121	5.65	144	0.326	146	9
1002N	5.65	144	5.65	144	-	-	-
1003	5.65	144	6.55	166	0.427	192	12
1004	6.55	166	7.45	189	0.53	238	15
1004N	7.45	189	7.45	189	-	-	-
1005	7.45	189	8.35	212	0.635	285	18
1006	8.35	212	9.25	235	0.74	332	21
1007	9.25	235	10.15	258	0.845	379	24
1008	10.15	258	11.05	281	0.951	427	27
1008N	11.05	281	11.05	281	-	-	-
1009	11.05	281	11.95	304	1.058	475	30
1010	11.95	304	12.85	326	1.164	523	33

PREFIX	DESCRIPTION	NO. OF GRATES ANCHOR STRAPS	TRENCH NUMBERS	PER FOOT
ZF*	10' Fiber Reinforced Polyester (FRP) Fiberglass Channel with Heavy-Duty Frame with Anchor Studs, Ductile Iron Grate - Class C with Lockdown and Anchor Straps	6	1002 thru 1010	195.00
ZFV	10' Vinylester Fiberglass Channel with Heavy-Duty Frame with Anchor Studs, Ductile Iron Grate - Class C with Lockdown and Anchor Straps	6	1002 thru 1010	238.00
OUTLET ADAPTERS				ADD/EACH
				ZF* ZFV
-E1	Closed End Cap			45.00 71.00
-E2	2" No-Hub End Outlet			45.00 71.00
-E3	3" No-Hub End Outlet			45.00 71.00
-E4	4" No-Hub End Outlet			45.00 71.00
-E6	6" No-Hub End Outlet			POA POA
-U2	2" No-Hub Bottom Outlet			45.00 71.00
-U3	3" No-Hub Bottom Outlet			45.00 71.00
-U4	4" No-Hub Bottom Outlet			45.00 71.00
-U6	6" No-Hub Bottom Outlet			POA POA
STANDARD GRATE OPTIONS				ADD/FOOT
-BDC	Black Acid Resistant Epoxy Coated Ductile Grate - Class C			54.00
-BDE	Black Acid Resistant Epoxy Coated Ductile Grate - Class E			75.00
-BG	Galvanized Ductile Iron Cast Bar Grate - Class C			36.00
-DBG	Ductile Iron Cast Bar Grate - Class C			21.00
-DC	Ductile Iron Solid Cover - Class C			25.00
-DGC	Ductile Iron Slotted Grate - Class C			*
-DGE	Ductile Iron Slotted Grate - Class E			17.00
-GDC	Galvanized Ductile Iron Grate - Class C			21.00
-GDE	Galvanized Ductile Grate - Class E			29.00
-GG	Fiberglass Grate - Class A			79.00
-GHPD	Heel-Proof Slotted - Class B			69.00
-GHPDE	Galvanized Heel-Proof Ductile ADA Grate - Class E			90.00
-GMG	Galvanized Steel Mesh Grate - Class B			52.00
-HPD	Heel-Proof Longitudinal Ductile ADA Grate - Class B			21.00
-HPP	Heel-Proof Polyethylene ADA Grate - Class A			12.00
-HPDE	Heel-Proof Longitudinal Ductile ADA Grate - Class E			51.00
-LD	Longitudinal Ductile Grate - Class B			16.00
-RFGC	Reinforced Galvanized Steel Slotted Grate - Class C			49.00
-RFSC	Reinforced Stainless Steel Slotted Grate - Class C			126.00
-RPGC	Reinforced Galvanized Perforated Grate - Class C			49.00
-RPGRC	Reinforced Galvanized Perforated Reverse Punch Anti-Slip Grate - Class C			49.00
-RPSC	Reinforced Perforated - Class C			126.00
-RPSRC	Reinforced Stainless Steel Perforated Reverse Punch Anti-Slip Grate - Class C			126.00
-SWG-B	Stainless Steel Wire Grate - Class B			401.00



*Regularly furnished unless otherwise specified.

*Indicates grate will be shipped unpainted. For an additional charge, Zurn will paint the grates. Please contact your customer service representative for pricing.

For additional product information, please visit www.zurn.com.

ZF806 6" WIDE TRENCH DRAIN SYSTEM

DECORATIVE GRATE OPTIONS		ADD/FOOT
-BCD	Bronze Circular Decorative Grate - Class A	397.00
-BDD	Bronze Diagonal Decorative Grate - Class A	397.00
-DCD	Ductile Circular Decorative Grate - Class C	25.00
-DDD	Ductile Diagonal Decorative Grate - Class A	25.00
-DOG	Ductile Decorative Grate - Class B	25.00
-DTW	Ductile Iron Tidal Wave Grate - Class C	34.00
-HPB	Heel-Proof Slotted Grate - Class A	397.00
-HPS	Heel-Proof Stainless Steel Slotted Grate - Class A	397.00
-SBG	Stainless Steel Bar Grate - Class E	397.00
-SCD	Stainless Steel Circular Decorative Grate - Class B	397.00
-SDD	Stainless Steel Diagonal Decorative Grate - Class B	397.00
-SMG	Stainless Steel Mesh Grate - Class B	158.00
-SOG	Stainless Steel Decorative Grate - Class B	397.00
-SWG-B	Stainless Steel Wire Grate - Class B	401.00
MISCELLANEOUS OPTIONS		ADD/FOOT
-VP	Vandal-Proof Center Lockdown	20.00
ADD/EACH		
-DB	Bottom Dome Strainer	77.00
-JC	Joint Connector	81.00

MADE IN THE U.S.A. (HIGHLIGHTED IN GRAY)		
STANDARD GRATE OPTIONS		ADD/FOOT
-AWG	Aluminum Wire Grate - Class A	580.00
-BDE-USA	Black Acid Resistant Epoxy Coated Ductile Grate - Class E	93.00
-DCE-USA	Ductile Iron Solid Cover - Class E	75.00
-DGC-USA	Ductile Iron Slotted Grate - Class C	23.00
-DGE-USA	Ductile Iron Slotted Grate - Class E	35.00
-FS	Fabricated Stainless Steel Slotted Grate - Class A	38.00
-GDC-USA	Galvanized Ductile Grate - Class C	42.00
-GDE-USA	Galvanized Ductile Grate - Class E	48.00
-GHPDE-USA	Galvanized Heel-Proof Ductile ADA Grate - Class E	117.00
-HPDE-USA	Heel Proof Longitudinal Ductile ADA Grate - Class E	77.00
-PPC	Plastic Perforated ADA Grate - Class C	93.00
-PS	Stainless Perforated Steel Grate - Class A	38.00
-PSR	Stainless Steel Perforated Reverse Punch Anti-Slip Grate - Class A	38.00
DEDUCT/FOOT		
-FG	Fabricated Galvanized Steel Slotted Grate - Class A	-16.00
-PG	Galvanized Perforated Steel ADA Grate - Class A	-16.00
-PGR	Galvanized Perforated Reverse Punch Anti-Slip ADA Grate - Class E	-16.00
DECORATIVE GRATE OPTIONS		ADD/FOOT
-BZ	Bronze Decorative Grate - Class A	401.00
-NBZ-USA	Nickel Bronze Decorative Grate - Class A	POA
-PDE-USA	Ductile Iron Perforated ADA Grate - Class E	212.00
MISCELLANEOUS OPTIONS		ADD/FOOT
-CBF	Black Acid Resistant Coated Top Frame	40.00
-HD	Extra-Heavy-Duty Frame Assembly with Anchor Studs and Grate Lockdown Hardware	*
-HDG	Galvanized Extra-Heavy-Duty Frame Assembly with Anchor Studs and Grate Lockdown Hardware	67.00
-SF/HDS	Type 304 Heavy Duty Stainless Steel Top Frame Assembly	125.00
SERVICE CHARGES		ADD/EACH
Fabrication	- 45°; 90°; Tee; Side Outlet Fabs	375.00
	- Cross Fabs	745.00
Cutting		94.00

For additional product information, please visit www.zurn.com.

*Regularly furnished unless otherwise specified.

†Indicates grate will be shipped unpainted. For an additional charge, Zurn will paint the grates. Please contact your customer service representative for pricing.

ZF812 12" WIDE TRENCH DRAIN SYSTEM



Standard Length: 10'
Standard Grate Included: DGC

ENGINEERING SPECIFICATION

Channels shall be 10' long, 12" wide, and have a 9-1/4" wide throat. Modular channel sections shall be made of Fiber Reinforced Polyester (FRP) fiberglass, have interlocking ends, and radiused bottom. Channel shall be provided either flat (neutral) or with a 1.04% built-in slope. Channels shall be available with inverts ranging from 7.93" to 19.18". Choices of class A thru F grates shall be available with H-20 and/or FAA load ratings and/or ADA compliance with mechanical lockdown devices. A heavy-duty steel frame shall be provided to distribute weight between the grates and the FRP fiberglass channel. End caps and catch basins shall be available to complement the channels and grates. End outlets, bottom outlets, and side outlets shall be available in 4", 6", and 8" diameters. Trench drain shall be Flo-Thru model ZF812.

NOTE

White acid resistant coating also available for frame and grate

Trench Number	Shallow Invert		Deep Invert		Flow Rate		
	In.	mm	In.	mm	CFS	GPM	LPS
2002	7.93	201	9.18	233	2.088	937	59
2002N	9.18	233	9.18	233	-	-	-
2003	9.18	233	10.43	265	2.730	1225	77
2004	10.43	265	11.68	297	3.388	1521	96
2004N	11.68	297	11.68	297	-	-	-
2005	11.68	297	12.93	328	4.058	1821	115
2006	12.93	328	14.18	360	4.736	2125	134
2007	14.18	360	15.43	392	5.42	2432	153
2008	15.43	392	16.68	424	6.109	2742	173
2008N	16.68	424	16.68	424	-	-	-
2009	16.68	424	17.93	455	6.802	3053	193
2010	17.93	455	19.18	487	7.498	3365	212

PREFIX	DESCRIPTION	NO. OF GRATES ANCHOR STRAPS	TRENCH NUMBERS	PER FOOT
ZF*	10' Fiber Reinforced Polyester (FRP) Fiberglass Channel with Heavy-Duty Frame with Anchor Studs, Ductile Iron Grate - Class C with Lockdown and Anchor Straps	5	2002 thru 2010	392.00
ZFV	10' Vinylester Fiberglass Channel with Heavy-Duty Frame with Anchor Studs, Ductile Iron Grate - Class C with Lockdown and Anchor Straps	5	2002 thru 2010	491.00
OUTLET ADAPTERS				ADD/EACH
		ZF*	ZFV	
-E1	Closed End Cap	86.00	223.00	
-E4	4" No-Hub End Outlet	86.00	223.00	
-E6	6" No-Hub End Outlet	86.00	223.00	
-E8	8" No-Hub End Outlet	86.00	223.00	
-U4	4" No-Hub Bottom Outlet	86.00	223.00	
-U6	6" No-Hub Bottom Outlet	86.00	223.00	
-U8	8" No-Hub Bottom Outlet	86.00	223.00	

GRATE OPTIONS	ADD/FOOT
-BDC	Black Acid Resistant Ductile Grate - Class C 76.00
-BDE	Black Acid Resistant Ductile - Class E 93.00
-BDF	Black Acid Resistant Ductile Grate - Class F 150.00
-BG	Galvanized Ductile Iron Bar Grate - Class D 36.00
-DC	Ductile Iron Solid Cover - Class E 75.00
-DGC	Ductile Iron Slotted Grate - Class C *
-DGE	Ductile Iron Slotted Grate - Class E 45.00
-DGF	Ductile Iron Slotted Grate - Class F 102.00
-GDC	Galvanized Ductile Slotted Grate - Class C 76.00
-GDE	Galvanized Ductile Slotted Grate - Class E 93.00
-GDF	Galvanized Ductile Slotted Grate - Class F 150.00
-GG	Fiberglass Grate - Class A 102.00
-GHPD	Galvanized Heel-Proof - Class B 119.00
-GHPDE	Galvanized Heel-Proof Ductile ADA Grate - Class E 198.00
-HPD	Heel-Proof Ductile Slotted Grate - Class B 54.00
-HPDE	Heel-Proof Ductile ADA Grate - Class E 93.00
-PGR	Perforated Galvanized Raised - Class A 25.00
-PSR	Perforated Stainless Raised - Class A 198.00
-RFGC	Reinforced Galvanized Steel Slotted Grate - Class C 226.00
-RFSC	Reinforced Stainless Steel Slotted Grate - Class C 558.00
-RPGC	Reinforced Galvanized Perforated Grate - Class C 226.00
-RPGRC	Reinforced Galvanized Perforated Reverse Punch Anti-Slip Grate - Class C 226.00
-RPSC	Reinforced Stainless Steel Perforated ADA Grate - Class C 558.00
-RPSRC	Reinforced Stainless Steel Perforated Reverse Punch Anti-Slip Grate - Class C 558.00
-SBG-E	Stainless Steel Bar Grate - Class E 908.00
-SBG-L	Stainless Steel Bar Grate - Class C 538.00
-SWG-A	Stainless Steel Wire Grate - Class A 596.00

MISCELLANEOUS OPTIONS	ADD/FOOT
-VP	Vandal-Proof Center Lockdown 20.00

	ADD/EACH
-JC	Joint Connector 191.00

MADE IN THE U.S.A. (HIGHLIGHTED IN GRAY)

GRATE OPTIONS	ADD/FOOT
‡ -ADA-USA	Meets Americans with Disabilities Act Requirements - Class C 125.00
‡ -DGC-USA	Ductile Iron Slotted Grate - Class C 119.00
‡ -DGE-USA	Ductile Iron Slotted Grate - Class E 138.00
-FG	Fabricated Galvanized Steel Slotted Grate - Class A 25.00
-FS	Fabricated Stainless Steel Slotted Grate - Class A 198.00
-GADA-USA	Galvanized Ductile ADA Slotted Grate - Class C 146.00
-GDC-USA	Galvanized Ductile Slotted Grate - Class C 138.00
-GDE-USA	Galvanized Ductile Slotted Grate - Class E 173.00
-GHPDE-USA	Galvanized Heel-Proof Ductile ADA Grate - Class E 216.00
-HPDE-USA	Heel-Proof Ductile ADA Grate - Class E 156.00
-PG	Perforated Galvanized Steel ADA Grate - Class A 25.00
-PS	Perforated Stainless Steel ADA Grate - Class A 198.00
-SSCD	Reinforced Stainless Steel Solid Cover - Class B 567.00

MISCELLANEOUS OPTIONS	ADD/FOOT
-CBF	Black Acid Resistant Coated Top Frame 51.00
-GFA/HDG	Galvanized Welded Frame Assembly 54.00
-SF/HDS	Type 304 Heavy Duty Stainless Steel Top Frame 276.00

	ADD/EACH
-DB	Bottom Dome Strainer 102.00

SERVICE CHARGES	ADD/EACH
Fabrication	- 45°; 90°; Tee; Side Outlet Fabs 745.00
	- Cross Fabs 1,485.00

Cutting	183.00
---------	--------

*Regularly furnished unless otherwise specified.

‡Indicates grate will be shipped unpainted. For an additional charge, Zurn will paint the grates. Please contact your customer service representative for pricing.

For additional product information, please visit www.zurn.com.

ZF817 CATCH BASIN



Standard Grate Included: DGC

ENGINEERING SPECIFICATION

Catch Basins shall be 6" wide x 20" long x 24" deep, 12" wide x 24" long x 24" deep, or 24" wide x 24" long x 24" deep and shall be made of Fiber Reinforced Polyester (FRP) fiberglass. Choices of class A thru F grates shall be available with H-20, FAA, and/or ADA compliance. Outlets in 2", 3", 4", 6", and 8" diameters shall be available. Catch Basin shall be Flo-Thru model ZF817.

PREFIX	DESCRIPTION	TOP SIZE	APPROX. WT. LBS.	STANDARD PRICE
ZF*	Fiber Reinforced Polyester (FRP) Fiberglass Body with Heavy-Duty Steel Frame and Ductile Iron Grate - Class C	6 x 20	11	798.00
		12 x 24	36	1,123.00
		24 x 24	50	1,564.00
ZFV	Vinylester Fiberglass Body with Heavy-Duty Steel Frame and Ductile Iron Grate - Class C	6 x 20	11	1,195.00
		12 x 24	36	1,514.00
		24 x 24	50	1,940.00
OUTLET ADAPTERS		ADD/EACH		
		ZF*	ZFV	
-E4/U4	4" No-Hub End Outlet Adapter		108.00	195.00
-E6/U6	6" No-Hub End Outlet Adapter		108.00	195.00
-E8/U8	8" No-Hub End Outlet Adapter		108.00	195.00
-IA	Inlet Adapter (if more than one required) For Z806 Trench System		108.00	174.00
-IA	Inlet Adapter (if more than one required) For Z812 Trench System		194.00	301.00
GRATE OPTIONS - ADD PER BASIN (FULL GRATE)		6X20	12X24	24X24
-BCD	Bronze Circular Decorative Grate - Class A	397.00	-	-
-BDD	Bronze Diagonal Decorative Grate - Class A	397.00	-	-
-BG	Galvanized Ductile Iron Bar Grate - Class C	102.00	-	-
	Galvanized Ductile Iron Bar Grate - Class D	-	201.00	-
-DC	Ductile Iron Solid Cover - Class C	102.00	-	-
	Ductile Iron Solid Cover - Class E	-	201.00	-
-DCD	Ductile Circular Decorative Grate - Class C	102.00	-	-
-DDD	Ductile Diagonal Decorative Grate - Class A	102.00	-	-
-DGC	Ductile Iron Slotted Grate - Class C	*	*	*
-DGE	Ductile Iron Slotted Grate - Class E	102.00	201.00	-
-DGF	Ductile Iron Slotted Grate - Class F	-	397.00	789.00
-DOG	Ductile Decorative Grate - Class B	102.00	-	-
-DTW	Ductile Iron Tidal Wave Grate - Class C	105.00	-	-
-GDC	Galvanized Cast Iron Grate - Class C	52.00	245.00	441.00
-GDE	Galvanized Ductile Grate - Class E	136.00	289.00	-
-GDF	Galvanized Ductile Grate - Class F	-	441.00	874.00
-GG	Fiberglass Grate - Class A	150.00	294.00	511.00
-GHPD	Heel-Proof Slotted - Class B	99.00	191.00	-
-GHPDE	Galvanized Heel-Proof Ductile ADA Grate - Class E	183.00	353.00	-
-HPB	Bronze Heel-Proof Slotted Grate - Class A	397.00	-	-
-HPD	Heel-Proof Ductile ADA Grate - Class B	102.00	294.00	-
-HPDE	Heel-Proof Ductile ADA Grate - Class E	150.00	314.00	-
-HPP	Heel-Proof Polyethylene ADA Grate - Class A	52.00	-	-
-HPS	Stainless Steel Heel-Proof Slotted Grate - Class A	353.00	-	-
-LD	Ductile Iron Longitudinal Slotted Grate - Class B	102.00	-	-
-PS	Perforated Stainless Steel Grate - Class A	111.00	215.00	422.00

For additional product information, please visit www.zurn.com.

GRATE OPTIONS - ADD PER BASIN (FULL GRATE)		6X20	12X24	24X24
-RFGC	Reinforced Galvanized Steel Slotted Grate - Class C	118.00	247.00	-
-RFSC	Reinforced Stainless Steel Slotted Grate - Class C	458.00	605.00	-
-RPGC	Reinforced Galvanized Perforated ADA Grate - Class C	118.00	247.00	-
-RPGRC	Reinforced Galvanized Perforated Reverse Punch Anti-Slip ADA Grate - Class C	118.00	247.00	-
-RPSC	Reinforced Stainless Steel Perforated ADA Grate - Class C	458.00	605.00	-
-RPSRC	Reinforced Stainless Steel Perforated Reverse Punch Anti-Slip ADA Grate - Class C	458.00	605.00	-
-SBG	Stainless Steel Bar Grate - Class E	397.00	-	-
-SBG-L	Stainless Steel Bar Grate - Class C	-	524.00	-
-SCD	Stainless Steel Circular Decorative Grate - Class B	397.00	-	-
-SDD	Stainless Steel Diagonal Decorative Grate - Class B	397.00	-	-
-SOG	Stainless Steel Decorative Grate - Class B	397.00	-	-
-SWG-A	Stainless Steel Wire Grate - Class A	276.00	-	-
-SWG-B	Stainless Steel Wire Grate - Class B	401.00	-	-

MISCELLANEOUS OPTIONS			
-CBF	Black Acid Resistant Coated Frame	101.00	196.00 388.00
-FT	Foul Air Trap	POA	POA POA
-GFA/HDG	Galvanized Extra-Heavy-Duty Frame Assembly with Studs	101.00	196.00 388.00
-SF/HDS	Type 304 Heavy Duty Stainless Steel Top Frame	615.00	1,223.00 1,832.00
-Y	Sediment Bucket	207.00	268.00 353.00
-YS	Stainless Steel Sediment Bucket	397.00	571.00 961.00

MADE IN THE U.S.A. (HIGHLIGHTED IN GRAY)

GRATE OPTIONS - ADD PER BASIN (FULL GRATE)		6X20	12X24	24X24
-ADA- USA	Meets Americans with Disabilities Act Requirements - Class C	-	196.00	-
-AWG	Aluminum Wire Grate - Class A	POA	-	-
-BZ	Bronze Decorative Grate - Class A	397.00	-	-
-BDE- USA	Black Acid Resistant Epoxy Coated Ductile Grate - Class E	180.00	301.00	-
-DCE-USA	Ductile Solid Cover - Class E	125.00	-	-
-DGC-USA	Ductile Iron Slotted Grate - Class C	111.00	188.00	-
-DGE-USA	Ductile Iron Slotted Grate - Class E	122.00	208.00	-
-FG	Galvanized Steel Slotted Grate - Class A	54.00	102.00	201.00
-FS	Fabricated Stainless Steel Slotted Grate - Class A	111.00	215.00	422.00
-GADA-USA	Galvanized Ductile ADA Slotted Grate - Class C	-	268.00	-
-GDC-USA	Galvanized Ductile Grate - Class C	126.00	248.00	-
-GDE-USA	Galvanized Ductile Grate - Class E	150.00	294.00	-
-GHPDE- USA	Galvanized Heel-Proof Ductile ADA Grate - Class E	325.00	838.00	-
-HPDE-USA	Heel Proof Longitudinal Ductile ADA Grate - Class E	289.00	537.00	-
-NBZ USA	Nickel Bronze Decorative Grate - Class A	POA	-	-
-PG	Galvanized Steel Perforated Grate - Class A	54.00	102.00	201.00
-PPC	Plastic Perforated ADA Grate - Class C	173.00	-	-
-PS	Perforated Stainless Steel ADA Grate - Class A	111.00	215.00	422.00
-SWG	Stainless Steel Wire Grate - Class A	1,569.00	2,441.00	-

*Regularly furnished unless otherwise specified.

†Indicates grate will be shipped unpainted. For an additional charge, Zurn will paint the grates. Please contact your customer service representative for pricing.

Z706 6" WIDE FRAME AND GRATE SYSTEM



Standard Length: 10'
Standard Grate Included: DGC

ENGINEERING SPECIFICATION

ZURN Z706 6" Wide Frame and Grate System. Ten-foot long Dura-Coated 1" x 1" x 1/4" welded structural components with combination anchor tabs/leveling devices and anchor studs at appropriate locations. Complete with Ductile Iron Grate - Class C with lockdown.

NOTES

White acid resistant coating also available for frame and grate

PREFIX	DESCRIPTION	NO. OF GRATES/ ANCHOR STRAPS	PER FOOT
Z*	10' Long Frame with Anchor Studs and Combination Anchor Straps/Leveling Devices with Ductile Iron Grate - Class C with Lockdown	6	158.00

GRATE OPTIONS	ADD/FOOT
-BDC	Black Acid Resistant Epoxy Coated Ductile Grate - Class C 54.00
-BDE	Black Acid Resistant Epoxy Coated Ductile Grate - Class E 75.00
-BG	Galvanized Ductile Iron Bar Grate - Class C 36.00
-DBG	Ductile Iron Cast Bar Grate - Class C 21.00
-DGC	Ductile Iron Slotted Grate - Class C *
-DGE	Ductile Iron Slotted Grate - Class E 17.00
-DTW	Ductile Wave Grate - Class C 34.00
-GDC	Galvanized Ductile Grate - Class C 21.00
-GDE	Galvanized Ductile Grate - Class E 29.00
-GG	Fiberglass Grate - Class A 79.00
-GHPDE	Galvanized Heel-Prove Ductile ADA Grate - Class E 90.00
-HPD	Heel-Proof Longitudinal Ductile ADA Grate - Class B 21.00
-HPDE	Heel-Proof Longitudinal Ductile ADA Grate - Class E 51.00
-HPP	Heel-Proof Polyethylene ADA Grate - Class A 12.00
-RFGC	Reinforced Galvanized Steel Slotted Grate - Class C 49.00
-RFSC	Reinforced Stainless Steel Slotted Grate - Class C 126.00
-RPGC	Reinforced Galvanized Steel Perforated Grate - Class C 49.00
-RPGRC	Reinforced Galvanized Perforated Reverse Punch Anti-Slip Grate - Class C 49.00
-RPSC	Reinforced Stainless Steel Perforated ADA Grate - Class C 126.00
-RPSCR	Reinforced Stainless Steel Perforated Reverse Punch Anti-Slip Grate - Class C 126.00

DECORATIVE GRATE OPTIONS	ADD/FOOT
-BCD	Bronze Circular Decorative Grate - Class A 397.00
-BDD	Bronze Diagonal Decorative Grate - Class A 397.00
-DCD	Ductile Circular Decorative Grate - Class C 25.00
-DDD	Ductile Diagonal Decorative Grate - Class A 25.00
-DOG	Ductile Decorative Grate - Class B 25.00
-HPB	Heel-Proof Bronze Slotted Grate - Class A 397.00
-HPS	Heel-Proof Stainless Steel Slotted ADA Grate 353.00
-SBG	Stainless Steel Bar Grate - Class E 397.00
-SCD	Stainless Steel Circular Decorative Grate - Class B 353.00
-SDD	Stainless Steel Diagonal Decorative Grate - Class B 353.00
-SOG	Stainless Steel Decorative Grate - Class B 353.00
-SWG-B	Stainless Steel Wire Grate - Class B 401.00

MISCELLANEOUS OPTIONS	ADD/FOOT
-VP	Vandal-Proof Lockdown Assembly 20.00

MADE IN THE U.S.A. (HIGHLIGHTED IN GRAY)

STANDARD GRATE OPTIONS	ADD/FOOT
-AWG	Aluminum Wire Grate - Class A 580.00
-BDE-USA	Black Acid Resistant Epoxy Coated Ductile Grate - Class E 93.00
-DGC-USA	Ductile Iron Slotted Grate - Class C 23.00
-DGE-USA	Ductile Iron Slotted Grate - Class E 35.00
-FS	Fabricated Stainless Steel Slotted Grate - Class A 38.00
-GDC-USA	Galvanized Cast Iron Grate - Class C 42.00
-GDE-USA	Galvanized Ductile Grate - Class E 48.00
-GHPDE-USA	Galvanized Heel-Proof Ductile ADA Grate - Class E 117.00
-HPDE-USA	Heel-Proof Longitudinal Ductile ADA Grate - Class E 77.00
-PPC	Plastic Perforated ADA Grate - Class C 93.00
-PS	Stainless Steel Perforated Grate - Class A 38.00
-PSR	Stainless Steel Perforated Reverse Punch Anti-Slip ADA Grate-Class A 38.00

DEDUCT/FOOT	ADD/FOOT
-FG	Fabricated Galvanized Steel Slotted Grate - Class A -16.00
-PG	Perforated Galvanized Steel Grate - Class A -16.00
-PGR	Galvanized Perforated Reverse Punch Anti-Slip ADA Grate - Class A -16.00

DECORATIVE GRATE OPTIONS	ADD/FOOT
-BZ	Bronze Decorative Grate - Class A 397.00
-NBZ-USA	Nickel Bronze Decorative Grate - Class A 535.00
-PDE-USA	Ductile Iron Perforated ADA Grate - Class E 212.00

FRAME OPTIONS	ADD/FOOT
-CBF	Black Acid Resistant Coated Top Frame 40.00
-GFA/HDG	Galvanized Heavy Duty Frame 93.00
-SF/HDS	Type 304 Heavy Duty Stainless Steel Frame 125.00

*Regularly furnished unless otherwise specified.

†Indicates grate will be shipped unpainted. For an additional charge, Zurn will paint the grates. Please contact your customer service representative for pricing.

For additional product information, please visit www.zurn.com.

Z712 12" WIDE FRAME AND GRATE SYSTEM



Standard Length: 10'
Standard Grate Included: DGC

ENGINEERING SPECIFICATION

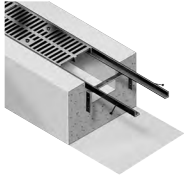
Zurn Z712 12" Wide Frame and Grate System. Ten-foot long Dura-Coated 1-3/4" x 1-3/4" x 1/4" angles with anchor studs at appropriate locations. Complete with Ductile Iron Grate - Class C with lockdown.

NOTES

White acid resistant coating also available for frame and grate

PREFIX	DESCRIPTION	NO. OF GRATES/ ANCHOR STRAPS	PER FOOT
Z*	10' Long Frame with Anchor Studs and Ductile Iron Grate - Class C with Lockdown	6	289.00
GRATE OPTIONS			ADD/FOOT
-BDC	Black Acid Resistant Ductile Grate - Class C		76.00
-BDE	Black Acid Resistant Ductile Grate - Class E		93.00
-BDF	Black Acid Resistant Ductile Grate - Class F		150.00
-BG	Galvanized Ductile Iron Bar Grate - Class C		36.00
-DC	Ductile Iron Solid Cover - Class E		75.00
-DGC	Ductile Iron Slotted Grate - Class C		*
-DGE	Ductile Iron Slotted Grate - Class E		45.00
-DGF	Ductile Iron Slotted Grate - Class F		102.00
-GDC	Galvanized Ductile Slotted Grate - Class C		76.00
-GDE	Galvanized Ductile Slotted Grate - Class E		93.00
-GDF	Galvanized Ductile Slotted Grate - Class F		150.00
-GG	Fiberglass Grate - Class A		102.00
-GHPD	Galvanized Heel-Proof Ductile Grate - Class B		119.00
-GHPDE	Galvanized Heel-Proof Ductile ADA Grate - Class E		198.00
-HPD	Heel-Proof Ductile Slotted Grate - Class B		54.00
-HPDE	Heel-Proof Ductile ADA Grate - Class E		93.00
-RFGC	Reinforced Galvanized Slotted Grate - Class C		226.00
-RFSC	Reinforced Stainless Steel Slotted Grate - Class C		558.00
-RPGC	Reinforced Galvanized Perforated ADA Grate - Class C		226.00
-RPGRC	Reinforced Galvanized Perforated Reverse Punch Anti-Slip ADA Grate - Class C		226.00
-RPSC	Reinforced Stainless Steel Perforated Grate - Class C		558.00
-RPSRC	Reinforced Stainless Steel Perforated Reverse Punch Anti-Slip ADA Grate - Class C		558.00
-SBG-E	Stainless Steel Bar Grate - Class E		908.00
-SBG-L	Stainless Steel Bar Grate - Class C		538.00
MISCELLANEOUS OPTIONS			ADD/FOOT
-VP	Vandal-Proof Lockdown Assembly		14.00
MADE IN THE U.S.A. (HIGHLIGHTED IN GRAY)			
GRATE OPTIONS			ADD/FOOT
-ADA-USA	Meets Americans with Disabilities Act Requirements - Class C		125.00
‡ -DGC-USA	Ductile Iron Slotted Grate - Class C		119.00
‡ -DGE-USA	Ductile Iron Slotted Grate - Class E		138.00
-FG	Fabricated Galvanized Steel Slotted Grate - Class A		25.00
-FS	Fabricated Stainless Steel Slotted Grate - Class A		198.00
-GADA-USA	Galvanized Ductile ADA Slotted Grate - Class C		146.00
-GDC-USA	Galvanized Ductile Slotted Grate - Class C		138.00
-GDE-USA	Galvanized Ductile Slotted Grate - Class E		173.00
-GHPDE-USA	Galvanized Heel-Proof Ductile ADA Grate - Class E		216.00
-HPDE-USA	Heel-Proof Ductile ADA Grate - Class E		156.00
-PG	Galvanized Perforated Steel Grate - Class A		25.00
-PGR	Galvanized Perforated Reverse Punch ADA Grate - Class A		25.00
-PS	Stainless Steel Perforated ADA Grate - Class A		198.00
-PSR	Stainless Steel Perforated Reverse Punch ADA Grate - Class A		198.00
-SSCD	Reinforced Stainless Steel Solid Cover - Class B		567.00
FRAME OPTIONS			ADD/FOOT
-CBF	Black Acid Resistant Coated Top Frame		54.00
-GFA/HDG	Galvanized Heavy Duty Frame		54.00
-SF/HDS	Type 304 Heavy Duty Stainless Steel Frame		276.00

Z717 17" WIDE FRAME AND GRATE SYSTEM



Standard Length: 80" (6.67')
Standard Grate Included: DGC†

ENGINEERING SPECIFICATION

Zurn Z717 17" Wide Frame and Grate System. 2" x 2-1/2" x 1/4" angle, 80" long, carbon steel frame assembly. Anchor studs and combination anchor tabs/leveling devices at appropriate locations for embedding into surrounding concrete. Complete with Class C ductile iron slotted grates (-DGC).

NOTES

White acid resistant coating also available for frame and grate

PREFIX	DESCRIPTION	NO. OF GRATES/ ANCHOR STRAPS	PER FOOT
Z*	80" Heavy-Duty Frame with Anchor Studs, Ductile Iron Grate - Class C with Four Stainless Steel Lockdowns and Anchor Tabs	4	297.00
GRATE OPTIONS			ADD/FOOT
‡ -DCC	Ductile Iron Solid Cover - Class C		217.00
‡ -DCF	Ductile Iron Solid Cover - Class F		354.00
‡ -DGC	Ductile Iron Slotted Grate - Class C		*
‡ -DGF	Ductile Iron Slotted Grate - Class F		196.00
‡ -GDC	Galvanized Ductile Iron Grate - Class C		180.00
‡ -GDF	Galvanized Ductile Iron Grate - Class F		353.00
‡ -GG	Fiberglass Grate - Class A		206.00
‡ -GHPD	Galvanized Heel-Proof Ductile Grate - Class B		417.00
‡ -HPD	Heel-Proof Longitudinal Ductile Iron ADA Grate - Class B		256.00
‡ -SBG	Stainless Steel Bar Grate		658.00
MISCELLANEOUS OPTIONS			ADD/FOOT
-VP	Vandal Resistant		13.00
MADE IN THE U.S.A. (HIGHLIGHTED IN GRAY)			
GRATE OPTIONS			ADD/FOOT
‡ -ADA-USA	Meets Americans with Disabilities Act Requirements - Class C		208.00
‡ -DGC-USA	Ductile Iron Slotted Grate - Class C		184.00
‡ -DGF-USA	Ductile Iron Slotted Grate - Class F		287.00
‡ -GADA-USA	Galvanized Ductile ADA Slotted Grate - Class C		282.00
‡ -GDC-USA	Galvanized Ductile Slotted Grate - Class C		259.00
‡ -GDF-USA	Galvanized Ductile Slotted Grate - Class F		443.00
FRAME OPTIONS			ADD/FOOT
-CBF	Black Acid Resistant Coated Frame		75.00
-GFA/HDG	Galvanized Frame Assembly		75.00
-SF/HDS	Type 304 Heavy Duty Stainless Steel Top Frame		422.00

Z723 23" WIDE FRAME AND GRATE SYSTEM



Standard Length: 80" (6.67')
Standard Grate Included: DGC†

ENGINEERING SPECIFICATION

Zurn Z723 23" Wide Frame and Grate System. 2" x 2-1/2" x 1/4" angle, 80" long, carbon steel frame assembly. Anchor studs and combination anchor tabs/leveling devices at appropriate locations for embedding into surrounding concrete. Complete with Class C ductile iron slotted grates (-DGC).

NOTES

White acid resistant coating also available for frame and grate

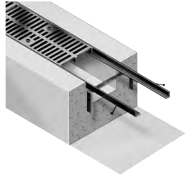
PREFIX	DESCRIPTION	NO. OF GRATES/ ANCHOR STRAPS	PER FOOT
Z*	80" Heavy-Duty Frame with Anchor Studs, Ductile Iron Grate - Class C with Four Stainless Steel Lockdowns and Anchor Tabs	4	439.00
GRATE OPTIONS			ADD/FOOT
‡ -DCC	Ductile Iron Solid Cover - Class C		319.00
‡ -DCF	Ductile Iron Solid Cover - Class F		156.00
‡ -DGC	Ductile Iron Slotted Grate - Class C		*
‡ -DGF	Ductile Iron Slotted Grate - Class F		223.00
‡ -GDC	Galvanized Ductile Iron Grate - Class C		207.00
‡ -GDF	Galvanized Ductile Iron Grate - Class F		321.00
‡ -GG	Fiberglass Grate - Class A		POA
‡ -HPD	Heel-Proof Longitudinal Ductile Iron Grate - Class C		347.00
MISCELLANEOUS OPTIONS			ADD/FOOT
-VP	Vandal-Proof Lockdown Assembly		13.00
MADE IN THE U.S.A. (HIGHLIGHTED IN GRAY)			
GRATE OPTIONS			ADD/FOOT
‡ -DGE-USA	Ductile Iron Slotted Grate - Class E		238.00
‡ -GDE-USA	Galvanized Ductile Slotted Grate - Class E		517.00
FRAME OPTIONS			ADD/FOOT
-CBF	Black Acid Resistant Coated Frame		75.00
-GFA/HDG	Galvanized Frame Assembly		75.00
-SF/HDS	Type 304 Heavy Duty Stainless Steel Top Frame		422.00

*Regularly furnished unless otherwise specified.

†Indicates grate will be shipped unpainted. For an additional charge, Zurn will paint the grates. Please contact your customer service representative for pricing.

For additional product information, please visit www.zurn.com.

Z726 26" WIDE FRAME AND GRATE SYSTEM




Standard Length: 80" (6.67')
Standard Grate Included: DGC‡

ENGINEERING SPECIFICATION

Zurn Z726 26" Wide Frame and Grate System. 2" x 2-1/2" x 1/4" angle, 80" long, carbon steel frame assembly. Anchor studs and combination anchor tabs/leveling devices at appropriate locations for embedding into surrounding concrete. Complete with Class C ductile iron slotted grates (-DGC).

NOTES

White acid resistant coating also available for frame and grate

PREFIX	DESCRIPTION	NO. OF GRATES/ ANCHOR STRAPS	PER FOOT
Z*	80" Heavy-Duty Frame with Anchor Studs, Ductile Iron Grate - Class C with Four Stainless Steel Lockdowns and Anchor Tabs	4	541.00
GRATE OPTIONS			ADD/FOOT
‡ -DCC	Ductile Iron Solid Cover - Class C		397.00
‡ -DGC	Ductile Iron Slotted Grate - Class C		*
‡ -DGF	Ductile Iron Slotted Grate - Class F		250.00
-GDC	Galvanized Ductile Iron Grate - Class C		320.00
-GDF	Galvanized Ductile Iron Grate - Class F		385.00
-GG	Fiberglass Grate - Class A		287.00
-GHPD	Galvanized Heel-Proof Ductile Grate - Class B		770.00
‡ -HPD	Heel-Proof Longitudinal Ductile Iron Grate - Class C		409.00
MISCELLANEOUS OPTIONS			ADD/FOOT
-VP	Vandal-Proof Lockdown Assembly		13.00
 MADE IN THE U.S.A. (HIGHLIGHTED IN GRAY)			
GRATE OPTIONS			ADD/FOOT
-DGE-USA	Ductile Iron Slotted Grate - Class E		289.00
-GDE-USA	Galvanized Ductile Iron Grate - Class E		571.00
FRAME OPTIONS			ADD/FOOT
-CBF	Black Acid Resistant Coated Frame		75.00
-GFA/HDG	Galvanized Frame Assembly		75.00
-SF/HDS	Type 304 Heavy Duty Stainless Steel Top Frame		422.00

Z885 POLYETHYLENE OIL SEPARATOR



ENGINEERING SPECIFICATION

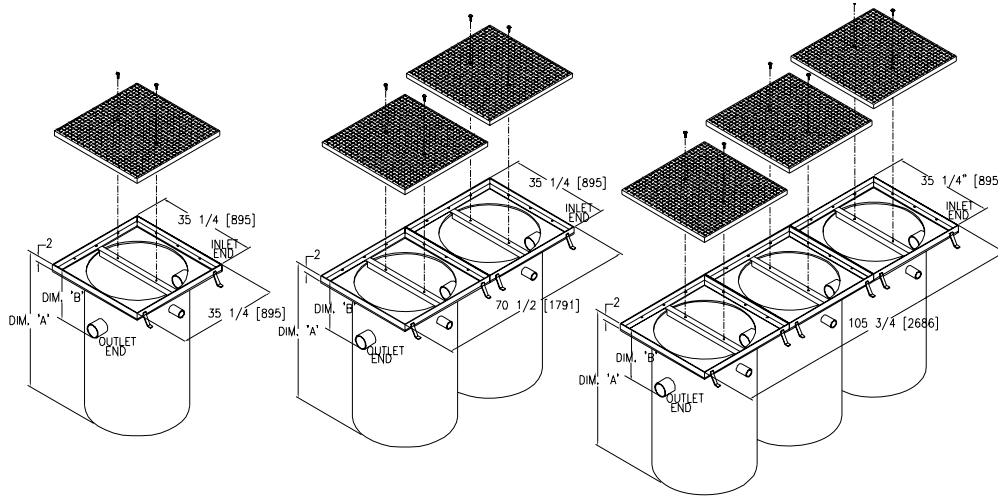
Zurn Z885 Polyethylene Oil Separator. 1/4" thick polyethylene body complete with heavy-duty Dura-Coated steel frame and 1/4" thick steel diamond plate covers with medium-duty top loading classification. Four-inch diameter No-Hub inlet/outlet with 2" diameter No-Hub vent connections. Dimensions shown nominally for reference. Top of grate to center of outlet distance is 8" unless otherwise specified.

NOTES

White acid resistant coating also available for frame and grate

MADE IN THE U.S.A. (HIGHLIGHTED IN GRAY)

PREFIX	DESCRIPTION	MODEL NUMBER	CAPACITY GALLONS	DEPTH	LIST PRICE
Z*	Polyethylene Basin with Medium-Duty Frame and Reinforced Steel Cover	Single Basin			
		Z885-1-30	70	30	6,545.00
		Z885-1-36	100	36	6,674.00
		Z885-1-48	130	48	7,284.00
		Z885-1-60	150	60	8,874.00
		Double Basin			
		Z885-2-30	140	30	11,065.00
		Z885-2-36	200	36	11,329.00
		Z885-2-48	260	48	12,033.00
		Z885-2-60	300	60	13,717.00
		Triple Basin			
		Z885-3-30	210	30	15,132.00
	Z885-3-36	300	36	15,567.00	
	Z885-3-48	390	48	16,911.00	
	Z885-3-60	450	60	18,972.00	
SUFFIX OPTIONS					ADD/EACH
-HD	Heavy-Duty Cover	Single Basin Model		1,163.00	
		Double Basin Model		2,325.00	
		Triple Basin Model		3,488.00	



A Depth	B = Invert Dimensions						
	8"	10"	12"	14"	16"	18"	20"
Gallons							
Single Basin Model							
30"	70	65	N/A	N/A	N/A	N/A	N/A
36"	100	93	84	78	72	N/A	N/A
48"	130	124	118	112	106	100	94
60"	150	143	138	132	128	122	116
Double Basin Model							
30"	140	130	N/A	N/A	N/A	N/A	N/A
36"	200	186	168	156	144	N/A	N/A
48"	261	248	236	224	212	200	187
60"	300	286	276	264	256	244	232
Triple Basin Model							
30"	210	195	N/A	N/A	N/A	N/A	N/A
36"	300	279	252	234	216	N/A	N/A
48"	391	373	354	336	318	299	281
60"	450	429	414	396	384	366	348

*Regularly furnished unless otherwise specified.

†Indicates grate will be shipped unpainted. For an additional charge, Zurn will paint the grates. Please contact your customer service representative for pricing.

For additional product information, please visit www.zurn.com.

GENERAL TERMS AND CONDITIONS

PRICE AND TERMS OF PAYMENT

Terms are net, payable 30 days from date of invoice. Zurn Credit must be identified of potential pricing errors within 30 days of invoice date. Shortage claims must be reported within 10 working days of receiving product to your local Zurn Rep or Zurn Customer Care. All pricing in U.S. currency. The Buyer shall pay all sales, consumers, or other applicable taxes. A 1-1/2% monthly (18% annual) service charge will be added to the outstanding balance of all past due invoices.

Minimum invoice \$250.00. Zurn Industries, LLC ("Zurn") reserves the right to apply a minimum order charge in order to meet the \$250.00 minimum invoice requirement. All orders are subject to credit approval by the Zurn Credit Department prior to the acceptance of an order. Orders may be refused, delivery may be withheld, or shipment stopped in transit without any liability on Zurn's part at Zurn's sole discretion based upon Buyer's credit worthiness as determined by Zurn.

FREIGHT

All sales are F.O.B. seller's location. Zurn will allow full freight allowance when any of the following conditions are met: 1) Plumbing Fixtures only orders totaling \$10,000 or more; 2) Zurn One Systems orders of \$7,500 or more; 3) Any combination of Linear Drainage and/or Stainless Drains orders of \$5,000 or more; 4) Any combination of Specification Drainage, Finish Plumbing, and/or Zurn Wilkins of \$5,000 or more; 5) Commercial Drainage only orders of \$3,500 or more; 6) PEX orders of \$3,000 or more. This full freight allowance applies when the shipment is within the continental United States and has a single destination of a Buyer's standard address or job location. Routing of shipment shall be determined at the sole discretion of Zurn. Shipping dates are estimates and time of delivery shall not be of the essence of this sale contract. Under no circumstances will the Seller have any responsibility on account of any delays in manufacture, transportation, or otherwise. Terms of Export Shipment on application.

NOTE: Shipments in excess of 90" long or 3,000 lbs may be subject to additional charges, and shall be defined as an oversized and/or overweight product and Zurn's standard FFA terms may not apply. Please contact our Customer Service Department for guidance on potential additional shipping charges. This new policy supersedes any existing agreements.

These charges and restrictions apply in addition to Zurn standard terms and conditions for sale unless otherwise agreed upon by the parties.

LIMITED WARRANTY

Zurn goods sold hereunder are warranted to be free from defects in material and factory workmanship for the period of time from the date of purchase: AquaVantage® Flush Valves, AquaFlush® Flush Valves, Commercial Fixtures, Faucets, Showers, and Tubular Brass: three years; Chemical Drainage, Linear Drainage, Commercial Drainage, Specification Drainage, Zurn Wilkins, and Flush Valve, Faucets, and Tubular Brass decorative finishes: one year; PHIX® Cartridge: ten years; FOG-ceptor®: thirty years. Where permitted by law, **THE IMPLIED WARRANTY OF MERCHANTABILITY IS LIMITED TO THE ABOVE IDENTIFIED PERIOD OF TIME AND SHALL BE LIMITED SOLELY TO THE REPLACEMENT OF THE DEFECTIVE GOODS.** A damaged/broken test cock or ball valve is not considered defective. Please contact Zurn Customer Care for assistance.

Zurn will replace goods at no cost that prove defective provided Zurn is notified in writing of such defect and the goods are returned prepaid at the specified Zurn location with evidence that they have been properly maintained and used in accordance with instructions. **ZURN SHALL NOT BE RESPONSIBLE FOR ANY LABOR CHARGES OR ANY LOSS, INJURY, OR DAMAGES WHATSOEVER, INCLUDING, BUT NOT LIMITED TO, INCIDENTAL OR CONSEQUENTIAL DAMAGES.** The sole and exclusive remedy shall be limited to the replacement of the defective goods. Before installation and use, the purchaser shall determine the suitability of the product for his intended use and the purchaser assumes all risk and liability whatever in the connection therewith. All weights stated in Zurn catalogs and lists are approximate and are not guaranteed.

RETURNED GOODS

Standard cataloged material may be returned only with the written permission of Zurn. Returned goods are subject to a 25% restocking charge of total saleable material returned, plus the cost of reconditioning, if necessary, to make material sellable. Transportation charges are the responsibility of the Buyer. Credit allowance will be in the form of merchandise credit only – not cash credit. The value of the return must total at least \$100.00 to qualify for credit allowance. No credit will be allowed for parts unless originally ordered and invoiced as parts. No credit will be allowed for discontinued or made-to-order items. Items that have been specially made are not subject to return or cancellation except by special negotiation. Material must be returned within one year of invoice date for credit to be issued for Commercial Fixtures, Flush Valve Products, Specification Drainage, Tubular Brass, Zurn Wilkins, Chemical Drainage, Linear Drainage, and Commercial Drainage. No credit is allowed for Linear Drainage products that have been cut and Specification Drainage product with auxiliary tappings. Flush Valve material over one year old will be subject to a 50% handling charge. Flush Valve material over five years old will not be accepted. Commercial Drainage and Specification Drainage galvanized material will be credited at value of Dura-Coated cast iron, and chrome-plated at value of bronze. Zurn Wilkins damaged/broken test cocks or ball valves are not considered defective.

ILLUSTRATIONS OF TYPICAL INSTALLATIONS

The typical installations for various products found in each product section are intended to illustrate the products and potential options for the use of these products. Under no circumstances are they to be construed as recommended installation procedures. Consult local codes and project specifications for proper installation instructions.

SHORTAGE/DAMAGE CLAIMS

Notification of material shortages or incorrect filling of orders must be made to Zurn within 10 days of receipt. No claims over three months old will be honored. Buyer agrees to make all complaints for damage in transit or "short count" directly to the carrier; before the contents are unloaded have the carrier agent's acknowledgment of such damage noted on the bill of lading and to present to the carrier its agent's acknowledgment of such damaged material with formal claim covering said damage.

GENERAL

Zurn reserves the right to make changes in design or equipment of any item or product without incurring any obligation on previously sold items, and to discontinue items at any time, without notice. Possession of this Catalog or other sales literature is not to be construed as an offer to sell. All orders are subject to acceptance by Zurn. Catalog printed in U.S.A.

Zurn flush valves are designed to comply with Army Corp of Engineers and Naval guide specifications, Military Specification MIL.V.29193 and Federal Specification WWP541.

Zurn flush valves comply with the following standards: ASME A112.18.1/CSA B125.1, A112.19.5, A112.19.2, A112.19.6, ASSE 1037 and 101 are listed by the following agencies: Canadian Standards, IAPMO/UPC/CUPC, and CSA 125.3. Zurn flush valves are manufactured from dezincification resistant alloys. For additional compliances, contact Zurn Industries, LLC, Finish Plumbing Operation, or 1-800-997-3876.

Zurn is not responsible for typographical errors. The contents of this guide are subject to revision without notice.

© 2022 Zurn Industries, LLC Items in this Guide may be covered by U.S. and foreign Patents and Patents Pending. Registered Trademarks.

by  Water Solutions

ZURN INDUSTRIES, LLC Trench Drainage Operation
1801 Pittsburgh Avenue, Erie, PA 16502, 855.663.9876

In Canada: **ZURN INDUSTRIES LIMITED**
7900 Goreway Drive, Unit 10, Brampton, Ontario L6T 5W6, 877.892.5216
Form No. 220-003, 12/21

US 1.855.ONE.ZURN CANADA 1.877.892.5216 [ZURN.COM](https://www.zurn.com)