



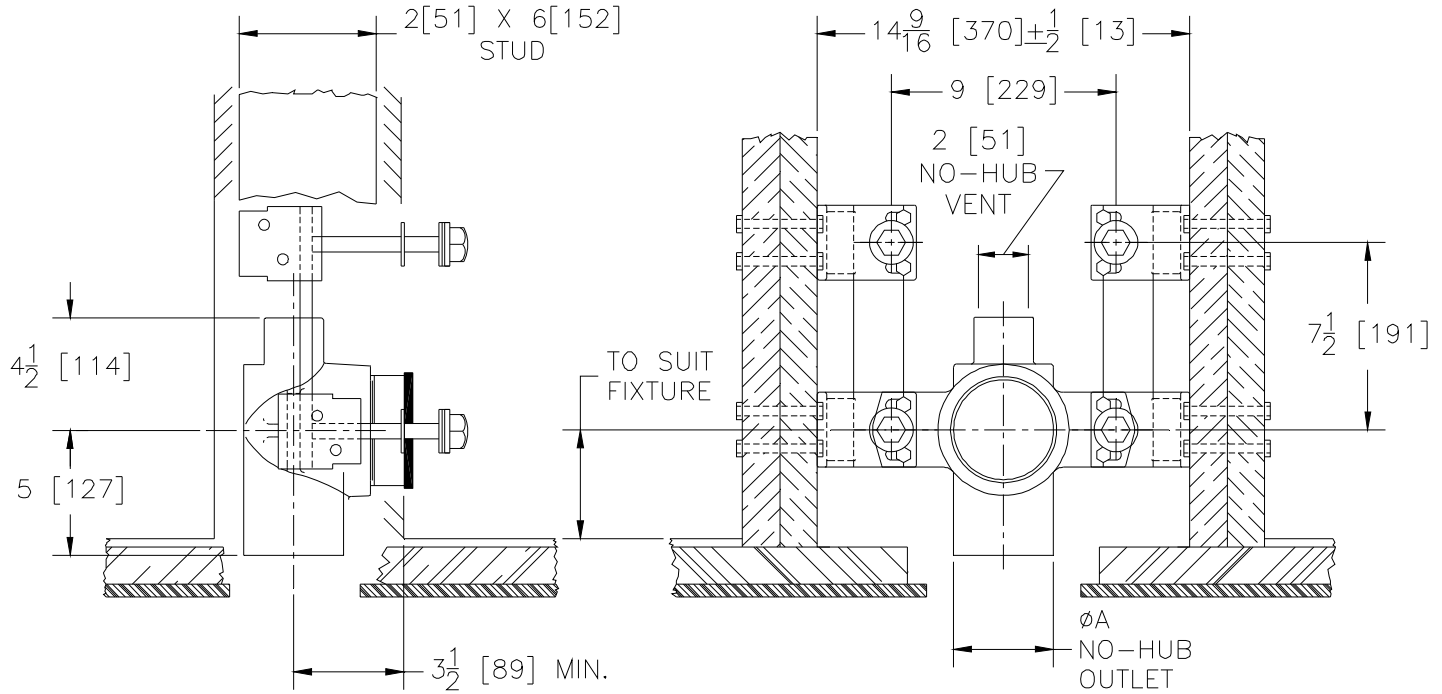
Z1280

WOOD STUD SUPPORTED NO-HUB WATER CLOSET CARRIER

SPECIFICATION SHEET

TAG _____

Dimensional Data (inches and [mm]) are Subject to Manufacturing Tolerances and Change Without Notice



Product Number	'A' Outlet Pipe Size in. (mm)	Approx. Wt. Lbs. [kg.]
Z1280-N32	3 [76]	30 [14]
Z1280-N42	4 [102]	40 [18]

ENGINEERING SPECIFICATION: ZURN Z1280 - ()

Residential water closet support system. Complete with Dura-Coated cast iron 3" [76mm] or 4" [102mm] No-Hub fitting (specify size) with 2" [51mm] Vent, support brackets, corrosion resistant ABS coupling, fixture bolts and trim, and bonded "Neo-Seal" gasket.

PREFIXES

___ Z Dura-Coated Bracket and Fitting System*

SUFFIXES

___ -X4 4 [102] Carrier Foot Extension (For -Y only)
 ___ -Y Foot Support System

* Regularly furnished unless otherwise specified.