



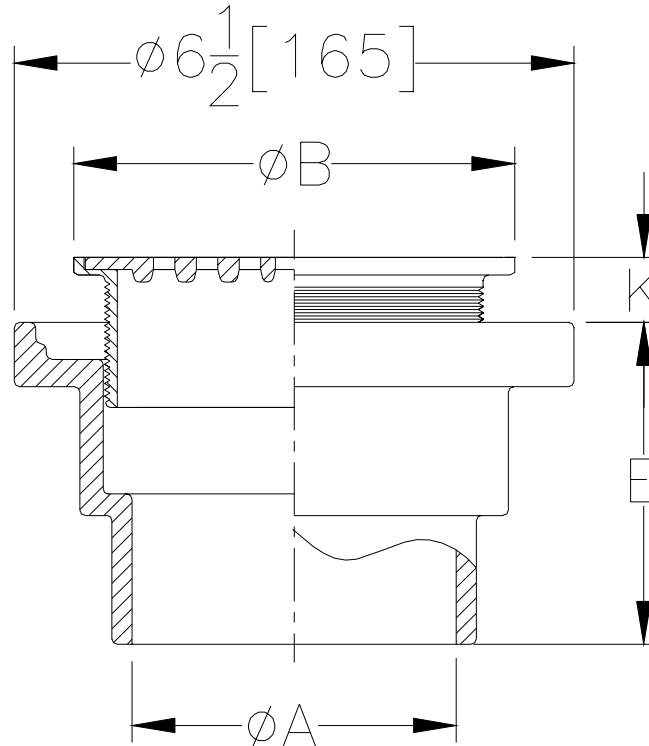
**ZXN-211-A
BODY ASSEMBLY
WITH "TYPE A" STRAINER**

SPECIFICATION SHEET

TAG _____



Dimensional Data (inches and [mm]) are Subject to Manufacturing Tolerances and Change Without Notice



| Str. Desig. | Dimensions In Inches / [mm] | | | | Approx. Wt. Lbs. / [kg] | Strainer Open Area Sq. In. / [sq cm] |
|-------------|------------------------------|-------------|-------------|---------------|-------------------------|--------------------------------------|
| | A Pipe Size | B Str. Dia. | K | | | |
| | | | Min. | Max. | | |
| -A5 | 2 - 3 - 4 [51 - 76 - 102] | 5 [127] | 1/4 [6] | 1-1/4 [32] | 8 [4] | 7 [45] |
| -A6 | 2 - 3 - 4 [51 - 76 - 102] | 6 [152] | 3/4 [19] | 1-5/8 [41] | 9 [4] | 11 [71] |

ENGINEERING SPECIFICATION: ZURN ZXN-211-A Floor and Shower Drain, Dura-Coated cast iron body with bottom outlet, adjustable "Type A" heavy-duty polished nickel bronze round strainer.

OPTIONS (Check/specify appropriate options)

PIPE SIZE

2,3,4 [50,75,100]

(Specify size/type) **OUTLET**

_____ NH No-Hub

E BODY HT. DIM.

3 3/4 [95]

SUFFIXES

- _____ -G Galvanized Cast Iron
- _____ -P 1/2" [13] Trap Primer Connection
- _____ -VP Vandal-Proof Secured Top
- _____ -X Squeezin Backwater Valve
- _____ -Y Sediment Bucket
- _____ -210 8" [203] Wide Flange Body

| | | |
|----------------|-----------------------|----------------|
| REV. | DATE: 11/15/99 | C.N. NO. 83320 |
| DWG. NO. 63608 | PRODUCT NO. ZXN-211-A | |

*REGULARLY FURNISHED UNLESS OTHERWISE SPECIFIED