



# Zurn Fire Protection Solutions

Smarter Solutions, Wider Selection



ZURN.COM US 1.855.ONE.ZURN CANADA 1.877.892.5216





# We're Solving Smarter

At Zurn, we aren't just a product and service provider, we're problem solvers – continuously focused on water control, safety and conservation. From our drain systems and interceptors to our finish plumbing, piping systems, and of course, our full line of fire protection solutions, we are known throughout the industry as a reliable leader.

“Zurn meets our expectations with its selection, level of quality, and timely delivery. I was able to find the valve configurations to complete my system. I appreciate the positive shutoff of the OS&Y gate valves. Not to mention, I didn't have to wait a week to get material.”

**GARY BLACKMORE**

Backflow Specialist – Fire Safety First

Backflow Preventers .....	4
Shut-Off Valves.....	8
Switches .....	8
Riser Equipment.....	8
Test and Drain Valves.....	8
Check Valves .....	8
In-Building Risers.....	9
Backflow Accessories .....	9
Fire Valves.....	10
Couplings and Fittings.....	11

*\*Not available in Canada.*

# Full Line. Full Compliance.

It's nice to have selection. It's even better if you can find it all through one manufacturer.

From backflow to every valve in between, complete your system with our Fire Protection Solutions. Our products work together and always meets compliance, so you'll gain peace of mind, yet save some time.



## Backflow Preventers

Enhance the service life of your fire protection system and avoid cross-contamination to your potable water supply by installing one of our patented backflow preventers.

## Fire Valves

Hose or floor control, field adjustable or factory set, globe or angle body configurations, grooved or threaded connections, our fire valves install how you need them to without a hitch. They are a reliable choice with more options, reliable performance and the lowest lifecycle costs.

## Automatic Control Valves

Fire systems can be complex with multiple controls for ranging functionality. Automatic control valves provide steady downstream pressure, allowing high flow rates without risk.

## Shut-Off Valves

Whether it's a simple repair or an emergency, turn off the source quickly without affecting your system. Our shut-off valves feature low torque actuation that's easy to maneuver time and again without fail.

## Pressure Relief Valves

Take some pressure off of your system – these guys are built to handle it. Our pressure relief valves automatically curb buildup whenever the line exceeds the desired setting.

## Stainless Steel Wilkins Building Riser (WBR)

When it comes to getting to the source, we've got you covered. With all stainless steel construction and intuitive installation, you can connect your building to the outside water supply line with fewer joints and without concern.



# Backflow Preventers

Zurn is recognized as the market leader in backflow products delivering innovative solutions with the lowest cost of ownership.



## Double Check Assemblies (DC)

Low hazard protection

**Small Diameter Models:** 350, 950XLT



**350**  
3/4"-1"



**350**  
1-1/4"-2"



**950XLT**  
3/4"-2"

**Large Diameter Models:** 350, 350A, 350AST, 350AR, 350ASTR, 450, 450ST, 450STR



**350** 2-1/2"-12"  
OSY, PI or Butterfly (2-1/2"-10") (optional)



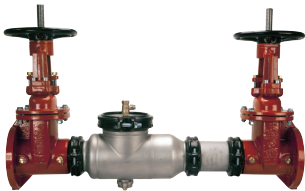
**350A** 2-1/2"-10"  
OSY, PI or Butterfly (optional)



**350AST** 2-1/2"-10"  
OSY, PI or Butterfly (optional)



**350AR** 2-1/2"-10"  
OSY, PI or Butterfly (optional)



**350ASTR** 2-1/2"-10"  
OSY, PI or Butterfly (optional)



**450STR** 4"-10"  
OSY, PI or Butterfly (optional)



**450** 2-1/2"-10"  
OSY, PI or Butterfly (4" - 10") (optional)



**450ST** 4"-10"  
OSY, PI or Butterfly (optional)



## Double Check Detector Assemblies (DCDA)

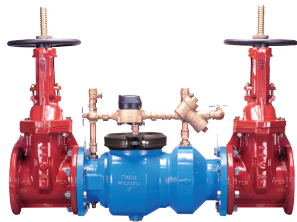
Low hazard protection with a metered bypass to detect leaks and unauthorized water use in unmetered fire sprinkler systems

### Small Diameter Models: 950XLTDABFSS



**950XLTDABFSS**  
2"

### Large Diameter Models: 350DA, 350ADA, 350ASTDA, 350ADAR, 350ASTDAR, 450STDAR, 450DA, 450STDA



**350DA** 2-1/2"-12"  
OSY (standard),  
PI or Butterfly (2-1/2" - 10") (optional)



**350ADA** 2-1/2"-10"  
OSY (standard),  
PI or Butterfly (optional)



**350ASTDA** 2-1/2"-10"  
OSY (standard),  
PI or Butterfly (optional)



**350ADAR** 2-1/2"-10"  
OSY (standard),  
PI or Butterfly (optional)



**350ASTDAR** 2-1/2"-10"  
OSY (standard),  
PI or Butterfly (optional)



**450STDAR** 4"-10"  
OSY (standard),  
PI or Butterfly (optional)



**450DA** 4"-10"  
OSY (standard),  
PI or Butterfly (optional)

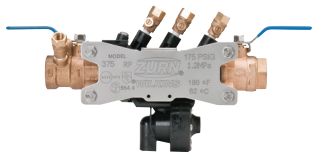


**450STDA** 4"-10"  
OSY (standard),  
PI or Butterfly (optional)

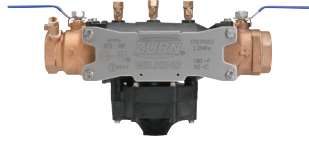
## Reduced Pressure Principle Assemblies (RP)

High hazard protection

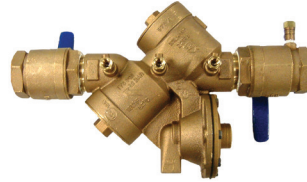
**Small Diameter Models:** 375, 975XL



**375**  
1/2"-1"



**375**  
1-1/4"-2"

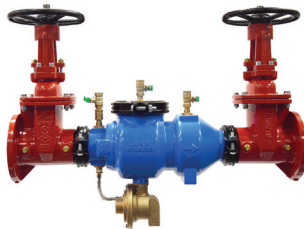


**975XL**  
3/4"-2"

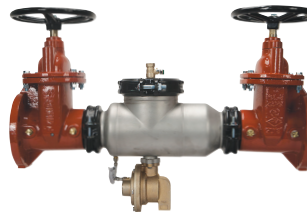
**Large Diameter Models:** 375, 375A, 375AST, 375AR, 375ASTR, 475, 475ST, 475V, 475STV, 475STR, 475STRV



**375** 2-1/2"-10"  
OSY, PI or Butterfly (optional)



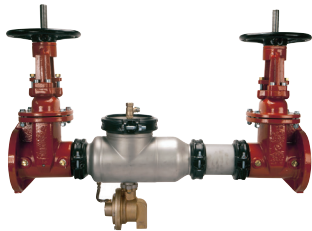
**375A** 2-1/2"-10"  
OSY, PI or Butterfly (optional)



**375AST** 2-1/2"-10"  
OSY, PI or Butterfly (optional)



**375AR** 2-1/2"-10"  
OSY, PI or Butterfly (optional)



**375ASTR** 2-1/2"-10"  
OSY, PI or Butterfly (optional)



**475** 2-1/2"-10"  
OSY, PI or Butterfly (4" - 10") (optional)



**475ST** 4"-10"  
OSY, PI or Butterfly (optional)



**475V** 4"-10"  
OSY, PI or Butterfly (optional)



**475STV** 4"-10"  
OSY, PI or Butterfly (optional)



**475STR** 4"-10"  
OSY, PI or Butterfly (optional)



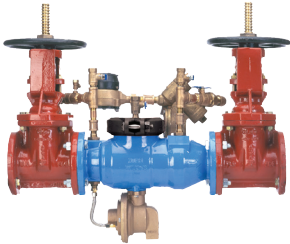
**475STRV** 4"-10"  
OSY, PI or Butterfly (optional)



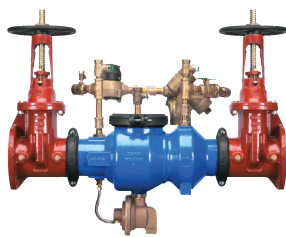
## Reduced Pressure Detector Assemblies (RPDA)

High hazard protection with a metered bypass to detect leaks and unauthorized water use in unmetered fire sprinkler systems

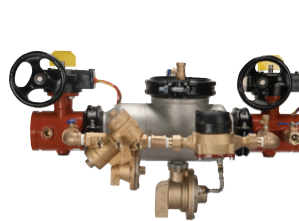
**Large Diameter Models:** 375DA, 375ADA, 375ASTDA, 375ASTDAR, 475DA, 475STDA, 475DAV, 475STDAV, 475STDAR, 475STDARV



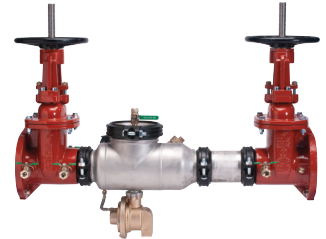
**375DA** 2-1/2"-10"  
OSY (standard),  
PI or Butterfly (2-1/2" - 10") (optional)



**375ADA** 2-1/2"-10"  
OSY (standard),  
PI or Butterfly (optional)



**375ASTDA** 2-1/2"-10"  
OSY (standard),  
PI or Butterfly (optional)



**375ASTDAR** 2-1/2"-10"  
OSY (standard),  
PI or Butterfly (optional)



**475DA** 4"-10"  
OSY (standard), PI or Butterfly (optional)



**475STDA** 4"-10"  
OSY (standard), PI or Butterfly (optional)



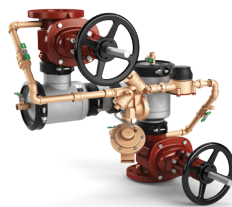
**475DAV** 4"-10"  
OSY (standard), PI or Butterfly (optional)



**475STDAV** 4"-10"  
OSY (standard), PI or Butterfly (optional)



**475STDAR** 4"-10"  
OSY (standard), PI or Butterfly (optional)



**475STDARV** 4"-10"  
OSY (standard), PI or Butterfly (optional)

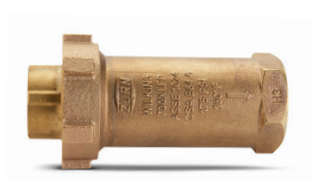
## Single Check/Dual Check

Non-hazardous applications

**Models:** 310/310DA, 700XLFP



**310/310DA**  
4"-8"



**700XLFP**  
1"-1-1/2"

# Shut-Off Valves

**Models:** 48OSY, 48OSYG, 480OSYGXF, F48OS&YF, 48PI, 49, F49, F49BR, F49BRG



**48OSY** 2-1/2"-12"  
Flange x Flange Gate Valve



**48OSYG** 2-1/2"-10"  
Groove x Groove Gate Valve



**48OSYGXF** 2-1/2"-10"  
Groove x Flange Gate Valve



**F48OS&YF** 2-1/2"-10"  
Untapped Flanged x Flanged  
Gate Valve



**48PI** 2-1/2"-12"  
Post Indicator Gate Valve  
Options: FxF, FxG, GxG



**49** 2-1/2"-10"  
Butterfly Valve  
Options: GxG, GxF, FxG



**F49** 2-1/2"-8"  
Fire Butterfly Valve



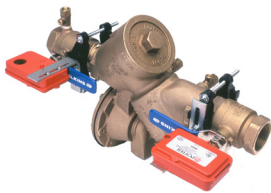
**F49BR** 1"-2-1/2"  
Powerball Butterfly Valve  
Threaded Connections



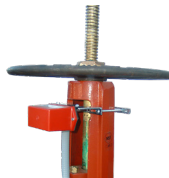
**F49BRG** 1-1/4"-2-1/2"  
Powerball Butterfly Valve  
Grooved Connections

## Switches

**Models:** BVMS, OSY-40



**BVMS** 3/4"-2"  
Ball Valve Monitor Switch



**OSY-40** 2-1/2"-12"  
Gate Valve Supervisory Switch

**Model:** FTD



**FTD** 1"-2"  
Inline Body

## Test and Drain Valves

## Riser Equipment

**Commercial Risers**

**Models:** FEZR, F210R



**FEZR** 2"-6"  
Standard: riser comes standard with  
test and drain valve, water flow detector switch  
and a pressure gauge



**F210R** 2"-6"  
Optional (Sold Separately)\*: Riser Check Trim Kits  
(Model CheckTrim)

## Check Valves

**Model:** F210



**F210** 2"-8"  
Check Valve



# In-Building Risers

**Models:** WBR, WBR6X8.5, WBR-F



**WBR 4"-10"**  
Grooved Outlet



**WBR6X8.5 4"-10"**  
Extended 8.5 ft vertical leg  
grooved outlet



**WBR-F 4"-10"**  
Flanged Outlet

# Backflow Accessories

**Setters, Air Gap Drain, Repair Kits, Test Kits**



**Valve Setters 2-1/2"-10"**  
FLS, MJFS, MJS



**Valve Setters  
400ST Series 4"-10"**  
FLSST, MJFSST, MJSST



**Air Gap Drain 1/4"-10"**  
AG-4 through AG-14



**Test Kits**



**Repair Kits**  
many different kits available for all models and sizes

# Fire Valves

## Hose Valves

**Model: F100**



**F100** 1-1/2", 2-1/2"  
Inlet: FNPT or Grooved  
Outlet: NHT or FNPT  
Option: Special Thread

## Restricting Hose Valves

**Model: F105**



**F105** 1-1/2", 2-1/2"  
Inlet: FNPT or Grooved  
Outlet: NHT or FNPT  
Option: Special Thread

## Pressure Reducing Valves

**Pressure-Tru® Field Adjustable Models:** ZW5000, ZW5004, Z3000, Z3005, Z3004, Z2100, Z2105



**ZW5000** 2-1/2"  
Hose Valve

Body: Angle or In-Line (Globe Type)  
Inlet: FNPT or Grooved (ZW5000),  
FNPT (ZW5000F)  
Outlet: NHT (ZW5000), FNPT (ZW500F)  
Option: Special Thread (ZW5000)



**ZW5004** 2-1/2"  
Floor Control Valve

Body: Angle or In-Line (Globe Type)  
Inlet: FNPT or Grooved  
Outlet: FNPT or Grooved



**Z3000** 2-1/2"  
Hose Valve

Body: Angle or In-Line (Globe Type)  
Inlet: FNPT or Grooved  
Outlet: NHT  
Option: Special Thread



**Z3005** 2-1/2"  
Hose Valve

Body: Angle or In-Line (Globe Type)  
Inlet: FNPT  
Outlet: FNPT



**Z3004** 2-1/2"  
Floor Control Valve

Body: Angle or In-Line (Globe Type)  
Inlet: FNPT or Grooved  
Outlet: FNPT or Grooved



**Z2100** 1-1/2"

Hose Valve  
Body: Angle  
Inlet: FNPT  
Outlet: NHT  
Option: Special Thread



**Z2105** 1-1/2"

Hose Valve  
Body: Angle  
Inlet: FNPT  
Outlet: FNPT

## Pressure Reducing Valves

**Pressure-Tru Factory Set Models:** ZW4000, ZW4004, ZW4100, ZW4104



**ZW4000** 2-1/2"

Hose Valve  
Body: Angle or In-Line (Globe Type)  
Inlet: FNPT or Grooved  
Outlet: NHT  
Option: Special Hose Thread



**ZW4004** 2-1/2"

Floor Control Valve  
Body: Angle or In-Line (Globe Type)  
Inlet: FNPT or Grooved  
Outlet: FNPT or Grooved



**ZW4100** 1-1/2"

Hose Valve  
Body: Angle  
Inlet: FNPT or Grooved  
Outlet: NHT  
Option: Special Thread



**ZW4104** 1-1/2"

Floor Control Valve  
Body: Angle  
Inlet: FNPT or Grooved  
Outlet: FNPT or Grooved



## Pilot Operated Valves (ACV)

**Models:** ZW209FP, ZW215FP, ZW205FP



**ZW209FP** 1-1/2"-10"  
Pressure Reducing Valve



**ZW215FP** 2"-10"  
Fire Pump Suction Control Valve



**ZW205FP** 2"-10"  
Pressure Relief Valve

## Fire Department Connections

**Model:** FDC2



**FDC2** 4" NPT x 2-1/2" NH  
Options: Back Inlet, Bottom Inlet

## Relief Valves

**Model:** P4000A



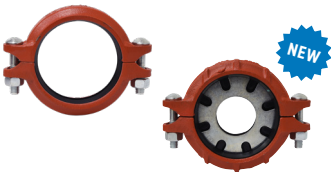
**P4000A** 1/2", 3/4"  
Pressure Relief Valve

# Couplings and Fittings

Not available in Canada.

**Models:** FP23, FP52, FP53, FP56, FP3, FP63, FP8, FP51

## Couplings



**FP23**  
Types: Reducing, Rigid (R), Flex (F)  
Sizes: 1"-10" (Rigid), 1-1/4"-10" (Flex),  
1-1/2" x 1-1/4" to 8" x 6" (Reducing)

## Elbows



**FP52** 1-1/4"-10"  
Types: 90 Degree Short (S), 90 Degree Standard,  
45 Degree (-45), 22.5 Degree (-22), 11.25 Degree  
(-11), End of Run Adapter (GTF)

## Tees



**FP53** 1-1/4"-10"  
Types: Tee Short Radius (S), Tee Standard Radius,  
Reducing Branch Tee (R)

## Crosses



**FP56** 2"-10"  
Crosses

## Caps



**FP3** 1-1/4"-8"  
Caps

## Mechanical Tees



**FP63** 1-1/4"-8"  
Types: Grooved (G), Threaded (TF), U-bolt (LTF)

## Grooved Flanges



**FP8** 2"-10"  
Type: Grooved Split

## Grooved Reducers



**FP51** 2"-10"  
Type: Concentric

Learn more about our fire protection products at [zurn.com/fire](http://zurn.com/fire)

Zurn Engineered Water Solutions® is a recognized leader in commercial, municipal, and industrial markets, delivering sustainable building solutions for new construction and retrofit applications. At Zurn, we are committed to providing smart solutions that save both time and money. Our goal is serving the customer through innovation, continuous improvement, and assurance behind every installation. Choose Zurn as a reliable, recognized manufacturer to supply your entire installation, from behind the wall rough-in, to finish trim product and fixture systems.



**Zurn Wilkins**  
1747 Commerce Way  
Paso Robles, CA 93446, 855.663.9876

In Canada  
**Zurn Industries Limited**  
7900 Goreway Drive, Unit 10  
Brampton, Ontario L6T 5W6, 877.892.5216

US 1.855.ONE.ZURN CANADA 1.877.892.5216 [ZURN.COM](https://www.zurn.com)

Form No. 440-171, 4/20